

LAMPIRAN

Daftar populasi sektor Industri Properti dan Real Estate tahun 2016-2020.

No.	Kode Emiten	Nama Perusahaan	Memenuhi Kriteria		
			*	**	***
1	ARMY	Armidian Karyatama Tbk	✓	✗	✗
2	APLN	Agung Podomoro Land, Tbk	✓	✓	✓
3	ASRI	Alam Sutera Reality, Tbk	✓	✓	✓
4	BAPA	Bekasi Asri Pemula, Tbk	✓	✓	✓
5	BAPI	Bhakti Agung Propertindo Tbk	✓	✗	✓
6	BCIP	Bumi Citra Permai, Tbk	✓	✓	✓
7	BEST	Bekasi Fajar Industrial Estate Tbk	✓	✗	✗
8	BIKA	Binakarya Jaya Abadi Tbk	✓	✗	✗
9	BIPP	Bhuwanatala Indah Permai, Tbk	✓	✓	✓
10	BKDP	Bukit Darmo Property Tbk	✓	✓	✓
11	BKSL	Bukit Darmo Property, Tbk	✓	✓	✓
12	BSDE	Sentul City, Tbk	✓	✗	✗
13	CITY	Natura City Developments Tbk	✓	✗	✓
14	COWL	Cowell Development Tbk	✓	✗	✓
15	CPRI	Capri Nusa Satu Properti Tbk	✓	✗	✗
16	CTRA	Ciputra Development, Tbk	✓	✓	✓
17	DART	Duta Anggada Reality, Tbk	✓	✓	✓
18	DILD	Intiland Development, Tbk	✓	✓	✓
19	DMAS	Puradelta Lestari Tbk	✓	✗	✗
20	DUTI	Duta Pertiwi, Tbk	✓	✓	✓
21	ELTY	Bakrieland Development, Tbk	✓	✓	✓
22	EMDE	Megapolitan Developments Tbk	✓	✗	✗
23	FMII	Fortune Mate Indonesia, Tbk	✓	✓	✓
24	FORZ	Forza Land Indonesia Tbk	✓	✗	✓
25	GAMA	Gading Development, Tbk	✓	✓	✓
26	GMTD	Gowa Makassar Tourism Development, Tbk	✓	✓	✓
27	GPRA	Perdana Gapuraprima, Tbk	✓	✓	✓
28	GWSA	Green Wood Sejahtera, Tbk	✓	✓	✓
29	INDO	Royalindo Investa Wijaya Tbk	✓	✗	✓
30	JRPT	Jaya Real Property, Tbk	✓	✓	✓
31	KIJA	Kawasan Industri Jababeka, Tbk	✓	✓	✓
32	KOTA	DMS Propertindo Tbk	✓	✗	✓
33	LAND	Trimitra Propertindo, Tbk	✓	✓	✓
34	LCGP	Eureka Prima Jakarta, Tbk	✓	✓	✓

35	LPCK	Lippo Cikarang, Tbk	✓	✓	✓
36	LPKR	Lippo Karawaci, Tbk	✓	✓	✓
37	MDLN	Modernland Realty Tbk	✓	✗	✗
38	MKPI	Metropolitan Kentjana Tbk	✓	✗	✗
39	MMLP	Mega Manunggal Property, Tbk	✓	✓	✓
40	MPRO	Maha Properti Indonesia Tbk	✓	✗	✗
41	MTLA	Metropolitan Land, Tbk	✓	✓	✓
42	MYRX	Hanson International Tbk	✓	✗	✗
43	NIRO	City Retail Developments, Tbk	✓	✓	✓
44	NZIA	Nusantara Almazia Tbk	✓	✗	✓
45	OMRE	Indonesia Prima Property, Tbk	✓	✓	✓
46	PAMG	Bima Sakti Pertiwi Tbk	✓	✗	✓
47	PLIN	Plaza Indonesia Realty Tbk	✓	✗	✗
48	POLI	Pollux Hotels Group Tbk	✓	✗	✓
49	POLL	Pollux Properties Indonesia Tbk	✓	✗	✓
50	POSA	Bliss Properti Indonesia Tbk	✓	✗	✓
51	PPRO	PP Properti Tbk	✓	✗	✗
52	PUDP	Pudjiati Prestige, Tbk	✓	✓	✓
53	PWON	Pakuwon Jati, Tbk	✓	✓	✓
54	REAL	Repower Asia Indonesia Tbk	✓	✗	✓
55	RISE	Rimo International Lestari Tbk	✓	✗	✓
56	RBMS	Rista Bintang Mahkota Sejati, Tbk	✓	✓	✓
57	RDTX	Roda Vivatex, Tbk	✓	✓	✓
58	RODA	Pikko Land Development, Tbk	✓	✓	✓
59	SATU	Kota Satu Properti Tbk	✓	✗	✓
60	SCBD	Rockfields Properti Indonesia Tbk	✓	✗	✗
61	SMDM	Suryamas Duta Makmur, Tbk	✓	✓	✓
62	SMRA	Summarecon Agung, Tbk	✓	✗	✗
63	TARA	Sitara Propertindo, Tbk	✓	✓	✓
64	TRIN	Perintis Trinita Properti Tbk	✓	✗	✓
65	URBN	Urban Jakarta Propertindo Tbk	✓	✗	✓

Keterangan kriteria sampel :

- * Perusahaan yang termasuk dalam Sektor Industri dan Properti selama periode 2016-2020
- ** Perusahaan yang memiliki kelengkapan laporan keuangan dan data penelitian selama periode 2016-2020.
- *** Laporan keuangan dalam bentuk mata uang rupiah dan terbaca dengan jelas.

Sampel yang digunakan dalam penelitian :

No.	Kode Emiten	Nama Perusahaan
1	APLN	Agung Podomoro Land, Tbk
2	ASRI	Alam Sutera Reality, Tbk
3	BAPA	Bekasi Asri Pemula, Tbk
4	BCIP	Bumi Citra Permai, Tbk
5	BIPP	Bhuwanatala Indah Permai, Tbk
6	BKSL	Bukit Darmo Property, Tbk
7	BSDE	Sentul City, Tbk
8	CTRA	Ciputra Development, Tbk
9	DART	Duta Anggada Reality, Tbk
10	DILD	Intiland Development, Tbk
11	DUTI	Duta Pertiwi, Tbk
12	ELTY	Bakrieland Development, Tbk
13	FMII	Fortune Mate Indonesia, Tbk
14	GAMA	Gading Development, Tbk
15	GMTD	Gowa Makassar Tourism Development, Tbk
16	GPRA	Perdana Gapuraprima, Tbk
17	GWSA	Green Wood Sejahtera, Tbk
18	JRPT	Jaya Real Property, Tbk
19	KIJA	Kawasan Industri Jababeka, Tbk
20	LAND	Trimitra Propertindo, Tbk
21	LCGP	Eureka Prima Jakarta, Tbk
22	LPCK	Lippo Cikarang, Tbk
23	LPKR	Lippo Karawaci, Tbk
24	MMLP	Mega Manunggal Property, Tbk
25	MTLA	Metropolitan Land, Tbk
26	NIRO	City Retail Developments, Tbk
27	OMRE	Indonesia Prima Property, Tbk
28	PUDP	Pudjiati Prestige, Tbk
29	PWON	Pakuwon Jati, Tbk
30	RBMS	Rista Bintang Mahkota Sejati, Tbk
31	RDTX	Roda Vivatex, Tbk
32	RODA	Pikko Land Development, Tbk
33	SMDM	Suryamas Duta Makmur, Tbk
34	SMRA	Summarecon Agung, Tbk
35	TARA	Sitara Propertindo, Tbk

LAMPIRAN

UJI CHOW

Redundant Fixed Effects Tests

Equation: Untitled

Test cross-section fixed effects

Effects Test	Statistic	d.f.	Prob.
Cross-section F	15.421905	(34,137)	0.0000
Cross-section Chi-square	275.501519	34	0.0000

Cross-section fixed effects test equation:

Dependent Variable: Y

Method: Panel Least Squares

Date: 05/17/22 Time: 12:16

Sample: 2016 2020

Periods included: 5

Cross-sections included: 35

Total panel (balanced) observations: 175

Variable	Coefficient	Std. Error	t-Statistic	Prob.
C	-2.429005	0.487754	-4.979982	0.0000
X1	0.101117	0.016893	5.985861	0.0000
X2	0.888404	0.290488	3.058318	0.0026
Z	-0.334689	0.351973	-0.950894	0.3430
R-squared	0.221742	Mean dependent var		0.621446
Adjusted R-squared	0.208089	S.D. dependent var		0.460527
S.E. of regression	0.409820	Akaike info criterion		1.076394
Sum squared resid	28.71986	Schwarz criterion		1.148732
Log likelihood	-90.18451	Hannan-Quinn criter.		1.105737
F-statistic	16.24052	Durbin-Watson stat		0.358739
Prob(F-statistic)	0.000000			

UJI HAUSMAN

Correlated Random Effects - Hausman Test

Equation: Untitled

Test cross-section random effects

Test Summary	Chi-Sq. Statistic	Chi-Sq. d.f.	Prob.
Cross-section random	11.238109	3	0.0105

Cross-section random effects test comparisons:

Variable	Fixed	Random	Var(Diff.)	Prob.
----------	-------	--------	------------	-------

X1	0.089513	0.100901	0.004353	0.8630
X2	-0.568873	-0.321258	0.007315	0.0038
Z	-0.141398	-0.200716	0.002877	0.2688

Cross-section random effects test equation:

Dependent Variable: Y

Method: Panel Least Squares

Date: 05/17/22 Time: 12:16

Sample: 2016 2020

Periods included: 5

Cross-sections included: 35

Total panel (balanced) observations: 175

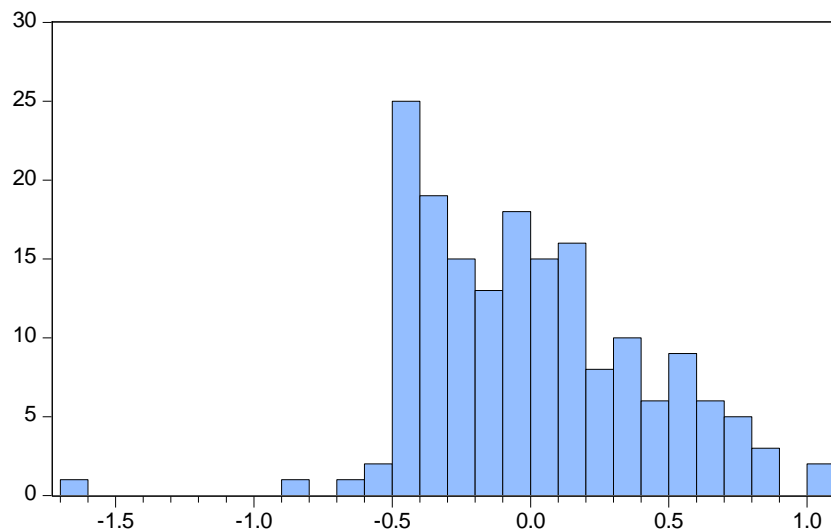
Variable	Coefficient	Std. Error	t-Statistic	Prob.
C	-1.871066	2.088826	-0.895750	0.3720
X1	0.089513	0.072509	1.234515	0.2191
X2	-0.568873	0.246344	-2.309261	0.0224
Z	-0.141398	0.224345	-0.630269	0.5296

Effects Specification

Cross-section fixed (dummy variables)

R-squared	0.838781	Mean dependent var	0.621446
Adjusted R-squared	0.795240	S.D. dependent var	0.460527
S.E. of regression	0.208390	Akaike info criterion	-0.109329
Sum squared resid	5.949425	Schwarz criterion	0.577882
Log likelihood	47.56625	Hannan-Quinn criter.	0.169424
F-statistic	19.26422	Durbin-Watson stat	1.293811
Prob(F-statistic)	0.000000		

UJI NORMALITAS



Series: Standardized Residuals
Sample 2016 2020
Observations 175

Mean -3.32e-16
Median -0.027226
Maximum 1.043012
Minimum -1.605605
Std. Dev. 0.406272
Skewness 0.151639
Kurtosis 3.515507

Jarque-Bera 2.608410
Probability 0.271388

UJI MULTIKOLONIERITAS

	X1	X2	Z
X1	1.000000	0.062566	-0.022819
X2	0.062566	1.000000	0.468055
Z	-0.022819	0.468055	1.000000

UJI HETEROKEDASTISITAS

Dependent Variable: RESABS

Method: Panel Least Squares

Date: 05/28/22 Time: 20:35

Sample: 2016 2020

Periods included: 5

Cross-sections included: 35

Total panel (balanced) observations: 175

Variable	Coefficient	Std. Error	t-Statistic	Prob.
C	1.555597	0.936676	1.660762	0.0990
X1	-0.050409	0.032541	-1.549102	0.1236
X2	0.145933	0.098767	1.477541	0.1418

Effects Specification

Cross-section fixed (dummy variables)

R-squared	0.634109	Mean dependent var	0.121955
Adjusted R-squared	0.538659	S.D. dependent var	0.139043
S.E. of regression	0.094441	Akaike info criterion	-1.696365
Sum squared resid	1.230828	Schwarz criterion	-1.027239
Log likelihood	185.4319	Hannan-Quinn criter.	-1.424948
F-statistic	6.643365	Durbin-Watson stat	2.371425
Prob(F-statistic)	0.000000		

UJI AUTOKORELASI

Dependent Variable: Y
 Method: Panel Least Squares
 Date: 05/21/22 Time: 05:49
 Sample: 2016 2020
 Periods included: 5
 Cross-sections included: 35
 Total panel (balanced) observations: 175

Variable	Coefficient	Std. Error	t-Statistic	Prob.
C	-2.446902	0.487255	-5.021813	0.0000
X1	0.102066	0.016858	6.054293	0.0000
X2	0.758434	0.256251	2.959731	0.0035
R-squared	0.217627	Mean dependent var		0.621446
Adjusted R-squared	0.208530	S.D. dependent var		0.460527
S.E. of regression	0.409706	Akaike info criterion		1.070240
Sum squared resid	28.87173	Schwarz criterion		1.124493
Log likelihood	-90.64597	Hannan-Quinn criter.		1.092246
F-statistic	23.92201	Durbin-Watson stat		0.381373
Prob(F-statistic)	0.000000			

STATISTIK DESKRIPTIF

	X1	X2	Z	Y
Mean	28.89504	0.157097	0.032554	0.621446
Median	29.01400	0.160000	0.025000	0.530000
Maximum	32.23800	1.042000	0.415000	1.808000
Minimum	22.86100	0.001000	-0.554000	0.001000
Std. Dev.	1.846000	0.121446	0.100061	0.460527
Skewness	-0.836028	2.443254	-0.836065	0.660440
Kurtosis	4.079145	17.72807	12.60857	2.513079
Jarque-Bera	28.87739	1755.789	693.5884	14.45076
Probability	0.000001	0.000000	0.000000	0.000728
Sum	5056.632	27.49200	5.697000	108.7530
Sum Sq. Dev.	592.9427	2.566355	1.742115	36.90277
Observations	175	175	175	175

REGRESI LINEAR PERSAMAAN 1

Dependent Variable: Y
 Method: Panel Least Squares
 Date: 05/21/22 Time: 05:50
 Sample: 2016 2020

Periods included: 5
 Cross-sections included: 35
 Total panel (balanced) observations: 175

Variable	Coefficient	Std. Error	t-Statistic	Prob.
C	-2.429005	0.487754	-4.979982	0.0000
X1	0.101117	0.016893	5.985861	0.0000
X2	0.888404	0.290488	3.058318	0.0026
Z	-0.334689	0.351973	-0.950894	0.3430
R-squared	0.221742	Mean dependent var		0.621446
Adjusted R-squared	0.208089	S.D. dependent var		0.460527
S.E. of regression	0.409820	Akaike info criterion		1.076394
Sum squared resid	28.71986	Schwarz criterion		1.148732
Log likelihood	-90.18451	Hannan-Quinn criter.		1.105737
F-statistic	16.24052	Durbin-Watson stat		0.358739
Prob(F-statistic)	0.000000			

REGRESI LINEAR TERHADAP Z

Dependent Variable: Z
 Method: Panel Least Squares
 Date: 05/21/22 Time: 08:12
 Sample: 2016 2020
 Periods included: 5
 Cross-sections included: 35
 Total panel (balanced) observations: 175

Variable	Coefficient	Std. Error	t-Statistic	Prob.
C	0.015019	0.113093	0.132807	0.8945
X1	-0.001231	0.004025	-0.305922	0.7600
X2	0.400251	0.056940	7.029297	0.0000
Y	-0.015716	0.016527	-0.950894	0.3430
R-squared	0.225894	Mean dependent var		0.032554
Adjusted R-squared	0.212313	S.D. dependent var		0.100061
S.E. of regression	0.088806	Akaike info criterion		-1.982141
Sum squared resid	1.348582	Schwarz criterion		-1.909803
Log likelihood	177.4374	Hannan-Quinn criter.		-1.952799
F-statistic	16.63334	Durbin-Watson stat		1.075799
Prob(F-statistic)	0.000000			

OLAH DATA											
PERUSAHAAN	TAHUN	TOTAL ASET	UKURAN PERUSAHAAN (X1)	PENJUALAN	TATO = PENJUALAN / TOTAL ASET (X2)	TOTAL HUTANG	TOTAL MODAL	DER= TOTAL HUTANG/TOTAL MODAL(Y)	LABA BERSIH	ROE = LABA BERSIH/EKUITAS(Z)	
APLN	2016	Rp 25.711.953.382.000	30,88	Rp 6.006.952.123.000	0,234	Rp 15.741.190.673.000	Rp 9.970.762.709.000	1,579	Rp 939.737.108.000	0,094	
APLN	2017	Rp 28.790.116.014.000	30,99	Rp 7.043.036.602.000	0,245	Rp 17.293.138.465.000	Rp 11.496.977.549.000	1,504	Rp 1.882.581.400	0,000	
APLN	2018	Rp 29.583.829.904.000	31,02	Rp 5.035.325.429.000	0,170	Rp 17.376.276.425.000	Rp 12.207.553.479.000	1,423	Rp 193.730.292.000	0,016	
APLN	2019	Rp 29.460.345.080.000	31,01	Rp 3.729.475.607.000	0,127	Rp 16.624.399.470.000	Rp 12.835.945.610.000	1,295	Rp 120.811.697.000	0,009	
APLN	2020	Rp 30.391.359.956.000	31,05	Rp 4.956.324.696.000	0,163	Rp 19.036.134.922.000	Rp 11.355.225.034.000	1,676	Rp 180.144.688.000	0,016	
ASRI	2016	Rp 20.186.130.682.000	30,64	Rp 2.715.688.780.000	0,135	Rp 12.998.285.601.000	Rp 7.187.845.081.000	1,808	Rp 510.243.279.000	0,071	
ASRI	2017	Rp 20.728.430.487.000	30,66	Rp 3.917.107.098.000	0,189	Rp 12.155.738.907.000	Rp 8.572.691.580.000	1,418	Rp 1.385.189.177.000	0,162	
ASRI	2018	Rp 20.890.925.564.000	30,67	Rp 3.975.258.160.000	0,190	Rp 11.339.568.456.000	Rp 9.551.357.108.000	1,187	Rp 970.586.600.000	0,102	
ASRI	2019	Rp 21.894.272.005.000	30,72	Rp 3.475.677.175.000	0,159	Rp 11.332.052.391.000	Rp 10.562.219.614.000	1,073	Rp 1.012.947.312.000	0,096	
ASRI	2020	Rp 21.226.814.871.000	30,69	Rp 1.413.251.961.000	0,067	Rp 11.840.666.961.000	Rp 9.386.147.910.000	1,262	Rp 1.036.617.865.000	-0,110	
BAPA	2016	Rp 106.399.701.038	25,39	Rp 34.022.502.954	0,320	Rp 34.367.842.846	Rp 72.031.858.192	0,477	Rp (2.936.886.182)	-0,041	
BAPA	2017	Rp 179.035.974.052	25,91	Rp 46.437.737.073	0,259	Rp 58.885.428.727	Rp 120.150.545.325	0,490	Rp 13.212.381.915	0,110	
BAPA	2018	Rp 172.313.437.729	25,87	Rp 28.451.499.193	0,165	Rp 44.423.132.493	Rp 127.313.437.729	0,349	Rp 4.950.263.483	0,039	
BAPA	2019	Rp 113.938.907.767	25,46	Rp 16.369.313.859	0,144	Rp 43.487.214.542	Rp 70.452.693.225	0,617	Rp 5.335.667.524	0,076	
BAPA	2020	Rp 74.625.428.601	25,04	Rp 1.402.839.790	0,019	Rp 5.331.724.814	Rp 69.293.703.787	0,077	Rp (3.387.468.150)	-0,049	
BCIP	2016	Rp 789.137.743.984	27,39	Rp 227.824.738.771	0,289	Rp 483.773.283.279	Rp 305.364.560.705	1,584	Rp 49.427.928.493	0,162	
BCIP	2017	Rp 843.447.229.256	27,46	Rp 189.037.576.143	0,224	Rp 483.271.261.151	Rp 360.175.968.107	1,342	Rp 53.529.632.889	0,149	
BCIP	2018	Rp 849.799.701.092	27,47	Rp 200.658.519.501	0,236	Rp 439.430.278.694	Rp 410.369.422.399	1,071	Rp 50.247.119.273	0,122	
BCIP	2019	Rp 867.065.425.451	27,49	Rp 131.094.399.577	0,151	Rp 433.530.491.804	Rp 433.534.933.647	1,000	Rp 23.201.520.208	0,054	
BCIP	2020	Rp 909.264.462.663	27,54	Rp 73.155.228.143	0,080	Rp 462.672.453.925	Rp 446.592.008.738	1,036	Rp 12.990.816.748	0,029	
BIKA	2016	Rp 2.400.682.388.179	28,51	Rp 631.183.291.034	0,263	Rp 1.731.221.077.695	Rp 669.461.310.484	2,586	Rp (77.981.341.628)	-0,116	
BIKA	2017	Rp 2.374.443.387.792	28,50	Rp 482.386.824.523	0,203	Rp 1.678.796.791.720	Rp 695.646.596.072	2,413	Rp (44.354.022.770)	-0,064	
BIKA	2018	Rp 2.333.636.785.839	28,48	Rp 407.818.436.673	0,175	Rp 1.674.921.852.871	Rp 658.714.932.968	2,543	Rp 45.682.595.609	-0,069	
BIKA	2019	Rp 2.358.913.545.648	28,49	Rp 394.076.483.099	0,167	Rp 1.744.747.483.289	Rp 614.166.062.359	2,841	Rp (82.553.635.471)	-0,134	
BIKA	2020	Rp 3.192.672.527.435	28,79	Rp 135.317.894.251	0,042	Rp 3.537.619.359.533	Rp (344.946.832.098)	-10,256	Rp (104.334.806.073)	0,302	
BIPP	2016	Rp 1.648.021.678.720	28,13	Rp 113.883.200.419	0,069	Rp 444.202.117.934	Rp 1.203.819.560.786	0,369	Rp 27.224.420.762	0,023	
BIPP	2017	Rp 1.748.640.897.106	28,19	Rp 108.781.215.028	0,062	Rp 534.787.535.126	Rp 1.213.853.361.980	0,441	Rp (30.408.276.217)	-0,025	
BIPP	2018	Rp 2.063.247.282.902	28,36	Rp 130.613.332.148	0,063	Rp 932.018.121.876	Rp 1.131.229.161.026	0,824	Rp (78.479.235.323)	-0,069	
BIPP	2019	Rp 2.165.031.833.086	28,40	Rp 359.062.749.459	0,166	Rp 1.048.342.846.364	Rp 1.116.688.986.722	0,939	Rp 4.822.404.616	0,004	
BIPP	2020	Rp 2.166.525.330.314	28,40	Rp 529.839.404.669	0,245	Rp 919.581.439.010	Rp 1.206.943.891.304	0,762	Rp 94.063.094.416	0,078	
BKDP	2016	Rp 785.095.652.150	27,39	Rp 52.413.771.234	0,067	Rp 239.151.281.393	Rp 545.944.370.757	0,438	Rp (28.948.289.175)	-0,053	
BKDP	2017	Rp 783.494.758.697	27,39	Rp 43.188.508.734	0,055	Rp 283.731.887.459	Rp 499.762.871.238	0,568	Rp (43.170.166.331)	-0,086	
BKDP	2018	Rp 763.537.440.279	27,36	Rp 36.070.319.372	0,047	Rp 300.149.514.530	Rp 463.387.925.749	0,648	Rp (36.654.139.665)	-0,079	
BKDP	2019	Rp 830.006.852.234	27,44	Rp 35.174.135.994	0,042	Rp 318.614.718.053	Rp 511.392.134.181	0,623	Rp (30.944.840.630)	-0,061	
BKDP	2020	Rp 790.840.175.521	27,40	Rp 19.558.738.651	0,025	Rp 309.509.265.589	Rp 481.330.909.932	0,643	Rp (31.050.114.021)	-0,065	
BKSL	2016	Rp 11.359.506.311.011	30,06	Rp 1.206.574.998.918	0,106	Rp 4.199.257.402.891	Rp 7.160.248.908.120	0,586	Rp 562.426.910.051	0,079	
BKSL	2017	Rp 14.997.041.120.833	30,34	Rp 1.623.484.966.262	0,108	Rp 5.034.486.488.719	Rp 9.942.554.632.114	0,506	Rp 468.559.181.741	0,047	
BKSL	2018	Rp 16.252.732.184.207	30,42	Rp 1.316.805.554.419	0,081	Rp 5.631.606.614.993	Rp 10.621.125.569.214	0,530	Rp 368.591.316.449	0,035	
BKSL	2019	Rp 17.275.272.609.213	30,48	Rp 951.421.027.715	0,055	Rp 6.578.349.800.074	Rp 10.696.922.809.139	0,615	Rp 68.928.077.412	0,006	
BKSL	2020	Rp 18.371.229.973.821	30,54	Rp 451.847.226.952	0,025	Rp 8.121.131.006.426	Rp 10.250.098.967.395	0,792	Rp (556.301.782.629)	-0,054	
CTRA	2016	Rp 29.072.250.000.000	31,00	Rp 6.739.315.000.000	0,232	Rp 14.774.323.000.000	Rp 14.297.927.000.000	1,033	Rp 1.170.706.000.000	0,082	
CTRA	2017	Rp 31.872.302.000.000	31,09	Rp 6.442.797.000.000	0,202	Rp 16.321.729.000.000	Rp 15.550.573.000.000	1,050	Rp 1.018.529.000.000	0,065	
CTRA	2018	Rp 34.289.017.000.000	31,17	Rp 7.670.405.000.000	0,224	Rp 17.644.741.000.000	Rp 16.644.276.000.000	1,060	Rp 1.302.702.000.000	0,078	
CTRA	2019	Rp 36.196.024.000.000	31,22	Rp 7.608.237.000.000	0,210	Rp 18.434.456.000.000	Rp 17.761.568.000.000	1,038	Rp 1.283.281.000.000	0,072	
CTRA	2020	Rp 39.255.187.000.000	31,30	Rp 8.070.737.000.000	0,206	Rp 21.797.659.000.000	Rp 17.457.528.000.000	1,249	Rp 1.370.686.000.000	0,079	
DART	2016	Rp 6.066.257.596.000	29,43	Rp 754.737.513.000	0,124	Rp 2.442.909.256.000	Rp 3.623.348.540.000	0,674	Rp 191.876.068.000	0,053	
DART	2017	Rp 6.360.845.609.000	29,48	Rp 445.956.264.000	0,070	Rp 2.801.378.185.000	Rp 3.559.467.424.000	0,787	Rp 30.177.817.000	0,008	
DART	2018	Rp 6.905.286.394.000	29,56	Rp 379.418.062.000	0,055	Rp 3.329.371.379.000	Rp 3.575.915.015.000	0,931	Rp 13.121.021.000	0,004	
DART	2019	Rp 6.880.951.291.000	29,56	Rp 461.440.807.000	0,067	Rp 3.565.822.980.000	Rp 3.315.128.311.000	1,076	Rp (260.776.918.000)	-0,079	
DART	2020	Rp 6.656.120.982.000	29,53	Rp 324.131.001.000	0,049	Rp 3.742.012.201.000	Rp 2.914.108.781.000	1,284	Rp (400.173.079.000)	-0,137	
DILD	2016	Rp 11.840.059.936.442	30,10	Rp 2.276.459.607.316	0,192	Rp 6.782.581.912.231	Rp 5.057.478.024.211	1,341	Rp 297.350.554.988	0,059	
DILD	2017	Rp 13.097.184.984.411	30,20	Rp 2.202.820.510.610	0,168	Rp 6.786.634.857.165	Rp 6.310.550.327.246	1,075	Rp 271.536.513.369	0,043	
DILD	2018	Rp 14.215.535.191.206	30,29	Rp 2.552.536.173.132	0,180	Rp 7.699.882.620.129	Rp 6.515.652.571.077	1,182	Rp 194.106.659.340	0,030	
DILD	2019	Rp 14.777.496.292.639	30,32	Rp 2.735.388.551.409	0,185	Rp 7.542.625.380.504	Rp 7.234.870.912.135	1,043	Rp 436.709.213.814	0,060	
DILD	2020	Rp 15.701.872.562.921	30,38	Rp 2.891.388.396.351	0,184	Rp 9.625.623.140.002	Rp 6.049.249.422.919	1,591	Rp 68.962.241.069	0,011	
DUTI	2016	Rp 296.129.565.787	26,41	Rp 115.940.711.050	0,392	Rp 32.865.162.199	Rp 263.264.403.585	0,125	Rp 10.009.391.103	0,038	
DUTI	2017	Rp 308.491.173.960	26,45	Rp 111.294.849.755	0,361	Rp 40.655.786.593	Rp 267.835.387.367	0,152	Rp 5.963.420.071	0,022	
DUTI	2018	Rp 322.185.012.261	26,50	Rp 143.382.081.850	0,445	Rp 44.476.413.260	Rp 277.708.599.001	0,160	Rp 9.380.137.352	0,034	
DUTI	2019	Rp 318.141.387.900	26,49	Rp 118.917.403.800	0,374	Rp 36.039.752.024	Rp 282.101.635.876	0,128	Rp 3.937.685.121	0,014	
DUTI	2020	Rp 317.310.718.779	26,48	Rp 96.644.910.643	0,305	Rp 32.487.055.094	Rp 284.823.663.685	0,114	Rp 2.400.715.154	0,008	
ELTY	2016	Rp 14.176.697.750.344	30,28	Rp 1.682.846.241.196	0,119	Rp 7.777.471.474.711	Rp 6.399.266.275.633	1,215	Rp (547.264.547.124)	-0,086	
ELTY	2017	Rp 14.082.517.542.900	30,28	Rp 1.239.228.442.094	0,088	Rp 7.918.961.982.887	Rp 6.163.555.560.013	1,285	Rp (269.805.546.504)	-0,044	
ELTY	2018	Rp 13.606.180.006.238	30,24	Rp 1.096.389.373.607	0,081	Rp 3.946.607.867.564	Rp 9.656.572.138.674	0,409	Rp 2.726.725.583.414	0,282	

