

DATA SAMPEL TAHUN 2015

KODE SAHAM	CR	DER	TATO	ROE	ROA
AKPI	1.030635126	1.603134631	0.699745527	0.024959882	0.009588395
ASII	1.37930537	0.939691622	0.750487909	0.123390736	0.063613584
BRAM	1.806468458	0.595301974	0.712275143	0.068733101	0.043084696
BRPT	1.105813283	0.883992846	0.62409524	0.004249487	0.002255575
CPIN	2.114167102	0.948644146	1.200828394	0.143321053	0.073549115
DLTA	6.423658147	0.222099416	1.515077092	0.226036186	0.184957282
DPNS	13.3500055	0.137536555	0.431630635	0.040859247	0.035919063
EKAD	3.568781531	0.334736624	1.363995561	0.161118058	0.120711499
IGAR	4.960975743	0.236651338	1.764178859	0.165610639	0.133918619
INCI	9.677320675	0.100581796	0.806084218	0.110097474	0.100035704
INDF	1.705334271	1.129594934	0.697602989	0.074944193	0.03519176
INDR	1.147733639	1.711404213	0.847412725	0.034052544	0.012559007
IPOL	0.878277435	0.832757464	0.714233009	0.017394025	0.009490631
KBLM	1.057304742	1.207217734	1.478807246	0.04304022	0.019499762
LMPI	1.506614686	0.976745047	0.570794715	0.009890153	0.005003252
MLBI	0.584215953	1.740910396	1.283439631	0.648300021	0.236527258
MYOR	2.365336656	1.183617902	1.306453502	0.240685874	0.110223439
PBRX	3.598447458	1.051550926	0.945203769	0.039940817	0.019468596
PICO	1.336317273	1.49215208	0.989306973	0.060606849	0.024720527
RICY	1.185574886	1.994892853	0.927271724	0.033657633	0.011238343
SKBM	1.122320947	1.221773191	1.781914517	0.116687109	0.052519811
SMBR	8.259991224	0.108266252	0.447047028	0.109604853	0.098897582
SMSM	2.393789181	0.54147619	1.262516959	0.320296921	0.207785837
SRSN	2.167073605	0.688054546	0.925967661	0.045591612	0.027008376
TRIS	1.946791652	0.710384204	1.487995481	0.130799826	0.076473944
ULTJ	3.745476334	0.265411512	1.241225356	0.186988079	0.147768593
UNIT	0.596242205	0.891580379	0.256786163	0.001588452	0.000838046
WIIM	2.893760434	0.422790365	1.3699408	0.13889993	0.097625015

DATA SAMPEL TAHUN 2016

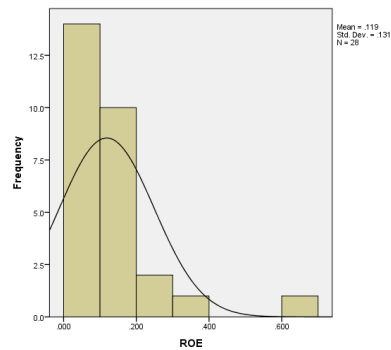
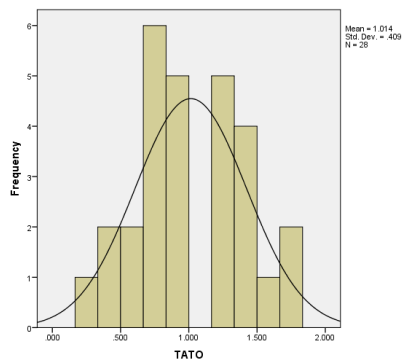
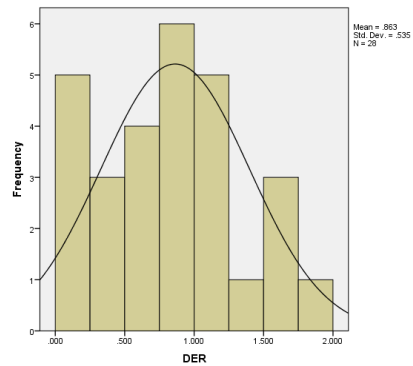
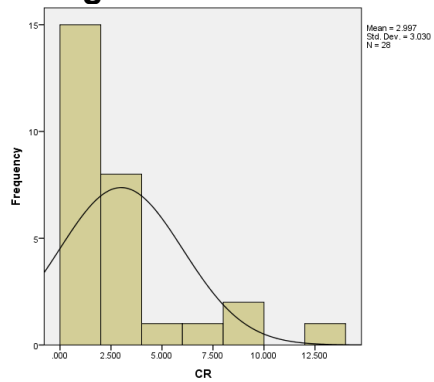
KODE SAHAM	CR	DER	TATO	ROE	ROA
AKPI	1.12875833	1.335559867	0.782603099	0.046778761	0.020028928
ASII	1.23938302	0.871649536	0.69154303	0.130816405	0.069893643
BRAM	1.890844091	0.497185866	0.744101164	0.112769584	0.075321032
BRPT	1.338263865	0.774818278	0.762979316	0.193180186	0.108845051
CPIN	2.172770198	0.709725121	1.580535694	0.157191764	0.091939787
DLTA	7.603872311	0.183156265	1.384724944	0.251398461	0.212481199
DPNS	15.16460091	0.124837091	0.391520214	0.038020298	0.033800715
EKAD	4.88557203	0.186660347	0.809440351	0.153184265	0.129088551
IGAR	5.821959575	0.175830923	1.803997179	0.185433602	0.157704308
INCI	5.815041381	0.109234053	0.653672392	0.041135699	0.037084778
INDF	1.508131428	0.870092259	0.812299495	0.110430675	0.059050924
INDR	1.156743937	1.828521299	0.817132904	0.004867209	0.001720761
IPOL	0.959129075	0.813939895	0.691518652	0.041661599	0.022967464
KBLM	1.301888493	0.992460191	1.545020404	0.066213724	0.033242547
LMPI	1.505628474	0.985350752	0.508345606	0.016985568	0.008555545
MLBI	0.679547992	1.77227286	1.434398458	1.196784217	0.431697844
MYOR	1.735245546	1.062383325	1.420009353	0.221647149	0.107462529
PBRX	3.76142063	1.282136701	0.928196108	0.05836491	0.025574677
PICO	1.33916556	1.303946877	1.105180952	0.04811543	0.021538036
RICY	1.148683848	2.124089285	0.947881069	0.034020505	0.010889735
SKBM	1.10723267	1.719017757	1.498632676	0.061200086	0.02250816
SMBR	2.868322826	0.399941108	0.348558244	0.105237723	0.075172964
SMSM	2.860252674	0.427000959	1.27725414	0.317831974	0.222727232
SRSN	1.74256467	0.783716512	0.697957017	0.027498946	0.015416657
TRIS	1.641710614	0.845502028	1.409891898	0.072738137	0.03941374
ULTJ	4.843635918	0.21493722	1.105394488	0.203433114	0.167443314
UNIT	0.648610048	0.777412871	0.240486606	0.003527454	0.001988333
WIIM	3.394229322	0.365798767	1.245384916	0.107245501	0.078522183

HASIL UJI DESKRIPTIF

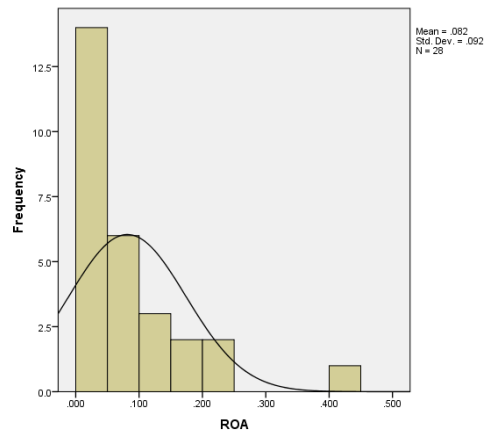
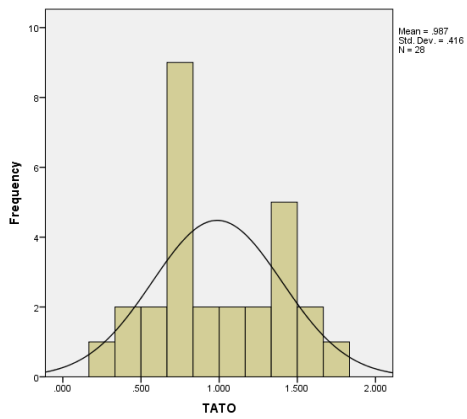
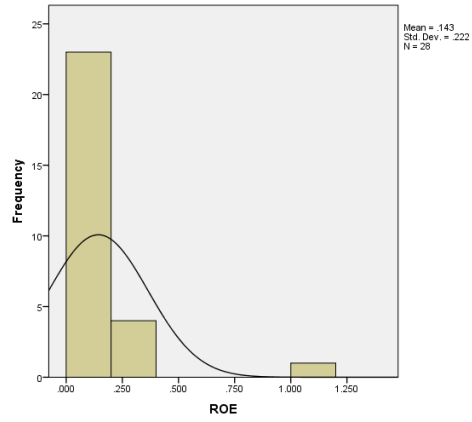
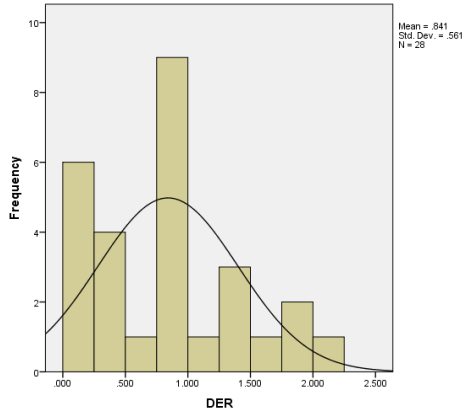
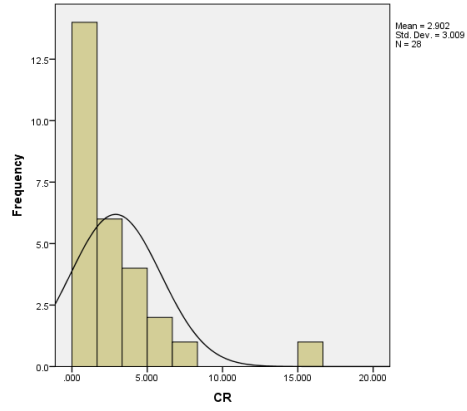
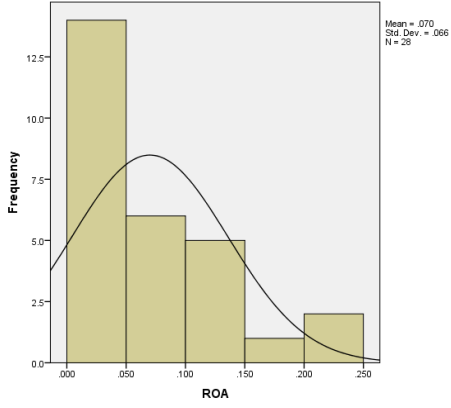
Descriptive Statistics

	N	Minimum	Maximum	Mean	Std. Deviation
CR 2015	28	.584	13.350	2.99670	3.029975
DER 2015	28	.101	1.995	.86332	.535393
TATO 2015	28	.257	1.782	1.01437	.409294
ROE 2015	28	.002	.648	.11862	.130632
ROA 2015	28	.001	.237	.07002	.065804
CR 2016	28	.649	15.165	2.90226	3.008690
DER 2016	28	.109	2.124	.84061	.560790
TATO 2016	28	.240	1.804	.98710	.415501
ROE 2016	28	.004	1.197	.14313	.221636
ROA 2016	28	.002	.432	.08150	.092410
Valid N (listwise)	28				

Histogram 2015



Histogram 2016



HASIL UJI NORMALITAS

NPar Tests

One-Sample Kolmogorov-Smirnov Test

		CR	DER	TATO	ROE	ROA	CR	DER	TATO	ROE	ROA
N		28	28	28	28	28	28	28	28	28	28
Normal Parameters ^{a,b}	Mean	2.99670	.86332	1.01437	.11862	.07002	2.90226	.84061	.98710	.14313	.08150
	Std. Deviation	3.029975	.535393	.409294	.130632	.065804	3.008690	.560790	.415501	.221636	.092410
Most Extreme Differences	Absolute	.257	.088	.104	.185	.162	.239	.121	.159	.264	.194
	Positive	.257	.088	.103	.181	.162	.239	.121	.159	.254	.191
	Negative	-.213	-.077	-.104	-.185	-.147	-.227	-.096	-.116	-.264	-.194
Kolmogorov-Smirnov Z		1.362	.467	.551	.980	.858	1.263	.639	.840	1.399	1.026
Asymp. Sig. (2-tailed)		.049	.981	.921	.292	.453	.082	.809	.481	.040	.243

a. Test distribution is Normal.

b. Calculated from data.

HASIL UJI BEDA (*PAIRED SAMPLE T TEST*)

T-Test

Tabel 4.3.1
Paired Samples Statistics

		Mean	N	Std. Deviation	Std. Error Mean
Pair 1	Current Ratio 2015	2.99670	28	3.029975	.572611
	Current Ratio 2016	2.90226	28	3.008690	.568589
Pair 2	Debt to Equity Ratio 2015	.86332	28	.535393	.101180
	Debt to Equity 2016	.84061	28	.560790	.105979
Pair 3	Total Asset Turn Over 2015	1.01437	28	.409294	.077349
	Total Asset Turn Over 2016	.98710	28	.415501	.078522
Pair 4	Return on Equity 2015	.11862	28	.130632	.024687
	Return on Equity 2016	.14313	28	.221636	.041885
Pair 5	Return on Asset 2015	.07002	28	.065804	.012436
	Return on Asset 2016	.08150	28	.092410	.017464

Tabel 4.3.2
Paired Samples Correlations

		N	Correlation	Sig.
Pair 1	Current Ratio 2015 & Current Ratio 2016	28	.891	.000
Pair 2	Debt to Equity Ratio 2015 & Debt to Equity 2016	28	.951	.000
Pair 3	Total Asset Turn Over 2015 & Total Asset Turn Over 2016	28	.917	.000
Pair 4	Return on Equity 2015 & Return on Equity 2016	28	.925	.000
Pair 5	Return on Asset 2015 & Return on Asset 2016	28	.882	.000

Tabel 4.3.3
Paired Samples Test – Uji t

		Paired Differences					t	df	Sig. (2-tailed)
					95% Confidence Interval of the Difference				
		Mean	Std. Deviation	Std. Error Mean	Lower	Upper			
Pair 1	Current Ratio 2015 - Current Ratio 2016	.094447	1.407412	.265976	-.451290	.640185	.355	27	.725
Pair 2	Debt to Equity Ratio 2015 - Debt to Equity 2016	.022706	.172995	.032693	-.044374	.089787	.695	27	.493
Pair 3	Total Asset Turn Over 2015 - Total Asset Turn Over 2016	.027274	.167787	.031709	-.037788	.092335	.860	27	.397
Pair 4	Return on Equity 2015 - Return on Equity 2016	-.024513	.112292	.021221	-.068055	.019029	-1.155	27	.258
Pair 5	Return on Asset 2015 - Return on Asset 2016	-.011486	.046236	.008738	-.029414	.006442	-1.315	27	.200