

LAMPIRAN

DATA-DATA OLAH DARI LAPORAN KEUANGAN

No.	Kode	Nama Perusahaan	Tahun	Total Saham Manajerial	Total Saham Konstitusional	Total Saham Asing	Total Saham Perusahaan	Dividen per share	Earning Per share	Kepemilikan Manajerial	Kepemilikan Institusional	Kepemilikan Asing (dummy)	Dividen
1	AISA	PT. Tiga Pilar Sejahtera Food, Tbk	2017	0	1281566681	1.937.033.319	3.218.600.000	0	0	0	0,398175194	1	0
2	ALTO	PT. Tri Bayan Tirta, Tbk	2017	49000000	2142870558	0	2191870558	0	0	0,022355335	0,977644665	0	0
3	CAMP	PT. Campina Ice Cream Industry, Tbk	2017	5000000000	885000000	0	5885000000	0	0	0,849617672	0,150382328	0	0
4	CEKA	PT. Wilmar Cahaya Indonesia, Tbk	2017	4500000	560800000	29700000	595000000	150	181	0,007563025	0,942521008	1	0,82872928
5	CLEO	PT. Sariguna Primatirta, Tbk	2017	0	12000000000	0	12000000000	0	0	0	1	0	0
6	COCO	PT. Wahana Interfood Nusantara, Tbk	2017	0	340000000	0	340000000	0	0	0	1	0	0
7	DLTA	PT. Delta Djakarta, Tbk	2017	0	333597900	467061150	800659050	0	0	0	0,41665413	1	0
8	HOKI	PT. Buyung Poetra Sembada, Tbk	2017	144039130	2215960870	0	2360000000	12	24	0,06103353	0,93896647	0	0,5
9	ICBP	PT. Indofood CBP Sukses Makmur, Tbk	2017	0	11661908000	0	11661908000	154	326	0	1	0	0,47239264
10	INDF	PT. Indofood Sukses Makmur, Tbk	2017	1380020	4382943030	4396103450	8780426500	235	475	0,00015717	0,499171997	1	0,49473684
11	KEJU	PT. Mulia Boga Raya, Tbk	2017	600000000	0	0	600000000	0	0	1	0	0	0
12	MLBI	PT. Multi Bintang Indonesia, Tbk	2017	0	383849000	1723151000	2107000000	371	627	0	0,182177978	1	0,59170654
13	MYOR	PT. Mayora Indah, Tbk	2017	5638834400	16719865325	0	22358699725	21	71	0,252198673	0,747801327	0	0,29577465
14	PCAR	PT. Prima	2017	0	1166666700	0	1166666700	0	0	0	1	0	0

		Cakrawala Abadi, Tbk											
15	ROTI	PT. Nippon Indosari Corporindo, Tbk	2017	0	3432927681	2753561207	6186488888	14	28	0	0,554907273	1	0,4963846 7
16	SKBM	PT. Sekar Bumi, Tbk	2017	4603391	286250859	399886250	690740500	5	34	0,006664429	0,414411576	1	0,1488095 2
17	SKLT	PT. Sekar Laut, Tbk	2017	4603391	286502484	399634625	690740500	5	34	0,006664429	0,414775859	1	0,1470588 2
18	STTP	PT. Siantar Top, Tbk	2017	41750800	1268249200	0	1310000000	0	0	0,03187084	0,96812916	0	0
19	TBLA	PT. Tunas Baru Lampung, Tbk	2017	4676000	5337422939	0	5342098939	30	182	0,000875311	0,999124689	0	0,1646813 4
20	ULTJ	PT. Ultrajaya Milk Industry and Trading Company, Tbk	2017	3910143100	7643385000	0	11553528100	10	61	0,338437148	0,661562852	0	0,1639344 3
21	AISA	PT. Tiga Pilar Sejahtera Food, Tbk	2018	0	1281566681	1.937.033.319	3.218.600.000	0	0	0	0,398175194	1	0
22	ALTO	PT. Tri Bayan Tirta, Tbk	2018	49000000	2142870558	0	2191870558	0	0	0,022355335	0,977644665	0	0
23	CAMP	PT. Campina Ice Cream Industry, Tbk	2018	5000000000	885000000	0	5885000000	0	0	0,849617672	0,150382328	0	0
24	CEKA	PT. Wilmar Cahaya Indonesia, Tbk	2018	4500000	560800000	29700000	595000000	45	156	0,007563025	0,942521008	1	0,2884615 4
25	CLEO	PT. Sariguna Primatirta, Tbk	2018	0	12000000000	0	12000000000	0	0	0	1	0	0
26	COCO	PT. Wahana Interfood Nusantara, Tbk	2018		340000000	0	340000000	0	0	0	1	0	0
27	DLTA	PT. Delta Jakarta, Tbk	2018	0	333597900	467061150	800659050	0	0	0	0,41665413	1	0
28	HOKI	PT. Buyung Poetra Sembada, Tbk	2018	82860330	2291974290	0	2374834620	12	38	0,03489099	0,96510901	0	0,3157894 7
29	ICBP	PT. Indofood CBP Sukses Makmur, Tbk	2018	0	11661908000	0	11661908000	220	392	0	1	0	0,5612244 9
30	INDF	PT. Indofood Sukses Makmur,	2018	1380020	4382943030	4396103450	8780426500	237	474	0,00015717	0,499171997	1	0,5

		Tbk											
31	KEJU	PT. Mulia Boga Raya, Tbk	2018	600000000	0	0	600000000	0	0	1	0	0	0
32	MLBI	PT. Multi Bintang Indonesia, Tbk	2018	0	383849000	1723151000	2107000000	487	581	0	0,182177978	1	0,83820998
33	MYOR	PT. Mayora Indah, Tbk	2018	5638834400	16719865325	0	22358699725	27	77	0,252198673	0,747801327	0	0,35064935
34	PCAR	PT. Prima Cakrawala Abadi, Tbk	2018	0	1166666700	0	1166666700	0	0	0	1	0	0
35	ROTI	PT. Nippon Indosari Corporindo, Tbk	2018	0	3432927681	2753561207	6186488888	10	28	0	0,554907273	1	0,34841468
36	SKBM	PT. Sekar Bumi, Tbk	2018	4603391	286250859	399886250	690740500	7	47	0,006664429	0,414411576	1	0,14992504
37	SKLT	PT. Sekar Laut, Tbk	2018	4603391	286502484	399634625	690740500	7	47	0,006664429	0,414775859	1	0,14992504
38	STTP	PT. Siantar Top, Tbk	2018	41750800	1268249200	0	1310000000	0	0	0,03187084	0,96812916	0	0
39	TBLA	PT. Tunas Baru Lampung, Tbk	2018	4676000	5337422939	0	5342098939	45	142	0,000875311	0,999124689	0	0,31725888
40	ULTJ	PT. Ultrajaya Milk Industry and Trading Company, Tbk	2018	3986948900	7566579100	0	11553528000	12	60	0,345084973	0,654915027	0	0,2
41	AISA	PT. Tiga Pilar Sejahtera Food, Tbk	2019	0	1281566681	1.937.033.319	3.218.600.000	0	0	0	0,398175194	1	0
42	ALTO	PT. Tri Bayan Tirta, Tbk	2019	49000000	2142870558	0	2191870558	0	0	0,022355335	0,977644665	0	0
43	CAMP	PT. Campina Ice Cream Industry, Tbk	2019	5000000000	885000000	0	5885000000	0	0	0,849617672	0,150382328	0	0
44	CEKA	PT. Wilmar Cahaya Indonesia, Tbk	2019	4500000	560800000	29700000	595000000	100	362	0,007563025	0,942521008	1	0,27624309
45	CLEO	PT. Sariguna Primatirta, Tbk	2019	0	12000000000	0	12000000000	0	0	0	1	0	0
46	COCO	PT. Wahana Interfood Nusantara, Tbk	2019		560284938	0	560284938	0	0	0	1	0	0

47	DLTA	PT. Delta Djakarta, Tbk	2019	0	333597900	467061150	800659050	260	397	0	0,41665413	1	0,65491184
48	HOKI	PT. Buyung Poetra Sembada, Tbk	2019	79860330	2298545170	0	2378405500	12	44	0,033577256	0,966422744	0	0,27272727
49	ICBP	PT. Indofood CBP Sukses Makmur, Tbk	2019	0	11661908000	0	11661908000	195	432	0	1	0	0,45138889
50	INDF	PT. Indofood Sukses Makmur, Tbk	2019	1380020	4382943030	4396103450	8780426500	236	559	0,00015717	0,499171997	1	0,42218247
51	KEJU	PT. Mulia Boga Raya, Tbk	2019	271875000	1228125000	0	1500000000	100	79,71	0,18125	0,81875	0	1,25454774
52	MLBI	PT. Multi Bintang Indonesia, Tbk	2019	0	383849000	1723151000	2107000000	536	572	0	0,182177978	1	0,93706294
53	MYOR	PT. Mayora Indah, Tbk	2019	5638834400	16719865325	0	22358699725	29	89	0,252198673	0,747801327	0	0,3258427
54	PCAR	PT. Prima Cakrawala Abadi, Tbk	2019	0	1166666700	0	1166666700	0	0	0	1	0	0
55	ROTI	PT. Nippon Indosari Corporindo, Tbk	2019	0	3432927681	2753561207	6186488888	6	49	0	0,554907273	1	0,11807669
56	SKBM	PT. Sekar Bumi, Tbk	2019	4603391	286250859	399886250	690740500	9	65	0,006664429	0,414411576	1	0,13757261
57	SKLT	PT. Sekar Laut, Tbk	2019	5687044	285167206	399886250	690740500	9	65	0,008233257	0,412842748	1	0,13757261
58	STTP	PT. Siantar Top, Tbk	2019	41750800	1268249200	0	1310000000	0	0	0,03187084	0,96812916	0	0
59	TBLA	PT. Tunas Baru Lampung, Tbk	2019	4676000	5337422939	0	5342098939	25	124	0,000875311	0,999124689	0	0,20148291
60	ULTJ	PT. Ultrajaya Milk Industry and Trading Company, Tbk	2019	4160913460	7392614540	0	11553528000	12	89	0,360142241	0,639857759	0	0,13483146
61	AISA	PT. Tiga Pilar Sejahtera Food, Tbk	2020	0	9311800000	0	9311800000	0	0	0	1	0	0
62	ALTO	PT. Tri Bayan Tirta, Tbk	2020	49000000	2142870558	0	2191870558	0	0	0,022355335	0,977644665	0	0
63	CAMP	PT. Campina Ice Cream Industry,	2020	5000000000	885000000	0	5885000000	7	7,48	0,849617672	0,150382328	0	0,93582888

		Tbk											
64	CEKA	PT. Wilmar Cahaya Indonesia, Tbk	2020	0	565510000	29490000	595000000	100	306	0	0,950436975	1	0,32679739
65	CLEO	PT. Sariguna Primatirta, Tbk	2020	0	12000000000	0	12000000000	0	0	0	1	0	0
66	COCO	PT. Wahana Interfood Nusantara, Tbk	2020		560284938	0	560284938	0	0	0	1	0	0
67	DLTA	PT. Delta Djakarta, Tbk	2020	0	333597900	467061150	800659050	478	155	0	0,41665413	1	3,08387097
68	HOKI	PT. Buyung Poetra Sembada, Tbk	2020	82960330	2336477840	0	2419438170	12	16	0,034289089	0,965710911	0	0,75
69	ICBP	PT. Indofood CBP Sukses Makmur, Tbk	2020	0	11661908000	0	11661908000	215	565	0	1	0	0,38053097
70	INDF	PT. Indofood Sukses Makmur, Tbk	2020	1380020	4382943030	4396103450	8780426500	278	735	0,00015717	0,499171997	1	0,37823129
71	KEJU	PT. Mulia Boga Raya, Tbk	2020	271875000	1228125000	0	1500000000	100	80,67	0,18125	0,81875	0	1,2396182
72	MLBI	PT. Multi Bintang Indonesia, Tbk	2020	0	383849000	1723151000	2107000000	47	136	0	0,182177978	1	0,34558824
73	MYOR	PT. Mayora Indah, Tbk	2020	5638834400	16719865325	0	22358699725	30	92	0,252198673	0,747801327	0	0,32608696
74	PCAR	PT. Prima Cakrawala Abadi, Tbk	2020	0	1166666700	0	1166666700	0	0	0	1	0	0
75	ROTI	PT. Nippon Indosari Corporindo, Tbk	2020	0	3432927681	2753561207	6186488888	26	36	0	0,554907273	1	0,71511951
76	SKBM	PT. Sekar Bumi, Tbk	2020	4603391	286250859	399886250	690740500	15	62	0,006664429	0,414411576	1	0,24260068
77	SKLT	PT. Sekar Laut, Tbk	2020	5687044	285167206	399886250	690740500	15	62	0,008233257	0,412842748	1	0,24260068
78	STTP	PT. Siantar Top, Tbk	2020	41750800	1268249200	0	1310000000	0	0	0,03187084	0,96812916	0	0
79	TBLA	PT. Tunas Baru Lampung, Tbk	2020	4676000	5337422939	0	5342098939	25	128	0,000875311	0,999124689	0	0,19496218
80	ULTJ	PT. Ultrajaya Milk Industry and	2020	8037938620	3515589380	0	11553528000	12	100	0,695712913	0,304287087	0	0,12

		Trading Company, Tbk											
81	AISA	PT. Tiga Pilar Sejahtera Food, Tbk	2021	0	9311800000	0	9311800000	0	0	0	1	0	0
82	ALTO	PT. Tri Bayan Tirta, Tbk	2021	49000000	2142870558	0	2191870558	0	0	0,022355335	0,977644665	0	0
83	CAMP	PT. Campina Ice Cream Industry, Tbk	2021	5000000000	885000000	0	5885000000	7	17	0,849617672	0,150382328	0	0,41176471
84	CEKA	PT. Wilmar Cahaya Indonesia, Tbk	2021	118200	565391800	29490000	595.000.000	100	314	0,000198655	0,950238319	1	0,31847134
85	CLEO	PT. Sariguna Primatirta, Tbk	2021	0	12000000000	0	12000000000	0	0	0	1	0	0
86	COCO	PT. Wahana Interfood Nusantara, Tbk	2021		559147308	330716673	889863981	0	0	0	0,628351433	1	0
87	DLTA	PT. Delta Jakarta, Tbk	2021	0	333597900	467061150	800659050	640	235	0	0,41665413	1	2,72340426
88	HOKI	PT. Buyung Poetra Sembada, Tbk	2021	333841320	9343911360	0	9677752680	0	0	0,034495748	0,965504252	0	0
89	ICBP	PT. Indofood CBP Sukses Makmur, Tbk	2021	0	11661908000	0	11661908000	215	548	0	1	0	0,39233577
90	INDF	PT. Indofood Sukses Makmur, Tbk	2021	1380020	4382943030	4396103450	8780426500	278	870	0,00015717	0,499171997	1	0,31954023
91	KEJU	PT. Mulia Boga Raya, Tbk	2021	271875000	1228125000	0	1500000000	100	96,47	0,18125	0,81875	0	1,03659169
92	MLBI	PT. Multi Bintang Indonesia, Tbk	2021	0	383849000	1723151000	2107000000	47	136	0	0,182177978	1	0,34558824
93	MYOR	PT. Mayora Indah, Tbk	2021	5638834400	16719865325	0	22358699725	52	53	0,252198673	0,747801327	0	0,98113208
94	PCAR	PT. Prima Cakrawala Abadi, Tbk	2021	0	1166666700	0	1166666700	0	0	0	1	0	0
95	ROTI	PT. Nippon Indosari Corporindo, Tbk	2021	0	3432927681	2753561207	6186488888	48	46	0	0,554907273	1	1,0516157
96	SKBM	PT. Sekar Bumi, Tbk	2021	4603391	286250859	399886250	690740500	15	123	0,006664429	0,414411576	1	0,12204052

97	SKLT	PT. Sekar Laut, Tbk	2021	5687044	285167206	399886250	690740500	15	62	0,008233257	0,412842748	1	0,2426006 8
98	STTP	PT. Siantar Top, Tbk	2021	41750800	1268249200	0	1310000000	0	0	0,03187084	0,96812916	0	0
99	TBLA	PT. Tunas Baru Lampung, Tbk	2021	4676000	5337422939	0	5342098939	25	151	0,000875311	0,999124689	0	0,1659475 6
100	ULTJ	PT. Ultrajaya Milk Industry and Trading Company, Tbk	2021	5598964960	5954563040	0	11553528000	12	122	0,484610844	0,515389156	0	0,0983606 6

No.	Kode	Nama Perusahaan	Tahun	Dividen	Kepemilikan Manajerial	Kepemilikan Institusional	Kepemilikan Asing (dummy)
1	AISA	PT. Tiga Pilar Sejahtera Food, Tbk	2017	0	0	0,063953793	1
2	AISA	PT. Tiga Pilar Sejahtera Food, Tbk	2018	0	0	0,063953793	1
3	AISA	PT. Tiga Pilar Sejahtera Food, Tbk	2019	0	0	0	1
4	AISA	PT. Tiga Pilar Sejahtera Food, Tbk	2020	0	0	0,650663622	0
5	AISA	PT. Tiga Pilar Sejahtera Food, Tbk	2021	0	0	0,650663622	0
6	ALTO	PT. Tri Bayan Tirta, Tbk	2017	0	0,0223553	0,758179735	0
7	ALTO	PT. Tri Bayan Tirta, Tbk	2018	0	0,0223553	0,758179735	0
8	ALTO	PT. Tri Bayan Tirta, Tbk	2019	0	0,0223553	0,758179735	0
9	ALTO	PT. Tri Bayan Tirta, Tbk	2020	0	0,0223553	0,758179735	0
10	ALTO	PT. Tri Bayan Tirta, Tbk	2021	0	0,0223553	0,758179735	0
11	CAMP	PT. Campina Ice Cream Industry, Tbk	2017	0	0,0849618	0	0
12	CAMP	PT. Campina Ice Cream Industry, Tbk	2018	0	0,0849618	0	0
13	CAMP	PT. Campina Ice Cream Industry, Tbk	2019	0	0,0849618	0	0
14	CAMP	PT. Campina Ice Cream Industry, Tbk	2020	0,93582888	0,0849618	0	0
15	CAMP	PT. Campina Ice Cream Industry, Tbk	2021	0,41176471	0,0849618	0	0
16	CEKA	PT. Wilmar Cahaya Indonesia, Tbk	2017	0,82872928	0,0756303	0,938040223	1
17	CEKA	PT. Wilmar Cahaya Indonesia, Tbk	2018	0,28846154	0,0756303	0,938040223	1
18	CEKA	PT. Wilmar Cahaya Indonesia, Tbk	2019	0,27624309	0,0756303	0,938040223	1
19	CEKA	PT. Wilmar Cahaya Indonesia, Tbk	2020	0,32679739	0	0,946113463	1
20	CEKA	PT. Wilmar Cahaya Indonesia, Tbk	2021	0,31847134	0,0198655	0,945909161	1
21	CLEO	PT. Sariguna Primatirta, Tbk	2017	0	0	0,8125	0
22	CLEO	PT. Sariguna Primatirta, Tbk	2018	0	0	0,8125	0
23	CLEO	PT. Sariguna Primatirta, Tbk	2019	0	0	0,8125	0
24	CLEO	PT. Sariguna Primatirta, Tbk	2020	0	0	0,8125	0
25	CLEO	PT. Sariguna Primatirta, Tbk	2021	0	0	0,8125	0
26	COCO	PT. Wahana Interfood Nusantara, Tbk	2017	0	0	1	0
27	COCO	PT. Wahana Interfood Nusantara, Tbk	2018	0	0	1	0
28	COCO	PT. Wahana Interfood Nusantara, Tbk	2019	0	0	0,531162187	0
29	COCO	PT. Wahana Interfood Nusantara, Tbk	2020	0	0	1	0
30	COCO	PT. Wahana Interfood Nusantara, Tbk	2021	0	0	0,334435576	1
31	DLTA	PT. Delta Djakarta, Tbk	2017	0	0	0,233247723	1
32	DLTA	PT. Delta Djakarta, Tbk	2018	0	0	0,233247723	1

33	DLTA	PT. Delta Jakarta, Tbk	2019	0,65491184	0	0,262534596	1
34	DLTA	PT. Delta Jakarta, Tbk	2020	3,08387097	0	0,262534596	1
35	DLTA	PT. Delta Jakarta, Tbk	2021	2,72340426	0	0,262534596	1
36	HOKI	PT. Buyung Poetra Sembada, Tbk	2017	0,5	0,0610335	0,916035067	0
37	HOKI	PT. Buyung Poetra Sembada, Tbk	2018	0,31578947	0,034891	0,949911814	0
38	HOKI	PT. Buyung Poetra Sembada, Tbk	2019	0,27272727	0,0335773	0,6619681	0
39	HOKI	PT. Buyung Poetra Sembada, Tbk	2020	0,75	0,0342891	0,649501438	0
40	HOKI	PT. Buyung Poetra Sembada, Tbk	2021	0	0,0344957	0,649501438	0
41	ICBP	PT. Indofood CBP Sukses Makmur, Tbk	2017	0,47239264	0	0,805329454	0
42	ICBP	PT. Indofood CBP Sukses Makmur, Tbk	2018	0,56122449	0	0,805329454	0
43	ICBP	PT. Indofood CBP Sukses Makmur, Tbk	2019	0,45138889	0	0,805329454	0
44	ICBP	PT. Indofood CBP Sukses Makmur, Tbk	2020	0,38053097	0	0,805329454	0
45	ICBP	PT. Indofood CBP Sukses Makmur, Tbk	2021	0,39233577	0	0,805329454	0
46	INDF	PT. Indofood Sukses Makmur, Tbk	2017	0,49473684	0,015717	0	1
47	INDF	PT. Indofood Sukses Makmur, Tbk	2018	0,5	0,015717	0	1
48	INDF	PT. Indofood Sukses Makmur, Tbk	2019	0,42218247	0,015717	0	1
49	INDF	PT. Indofood Sukses Makmur, Tbk	2020	0,37823129	0,015717	0	1
50	INDF	PT. Indofood Sukses Makmur, Tbk	2021	0,31954023	0,015717	0	1
51	KEJU	PT. Mulia Boga Raya, Tbk	2017	0	1	0	0
52	KEJU	PT. Mulia Boga Raya, Tbk	2018	0	1	0	0
53	KEJU	PT. Mulia Boga Raya, Tbk	2019	1,25454774	0,18125	0,133333333	0
54	KEJU	PT. Mulia Boga Raya, Tbk	2020	1,2396182	0,018125	0,7107364	0
55	KEJU	PT. Mulia Boga Raya, Tbk	2021	1,03659169	0,018125	0,7107364	0
56	MLBI	PT. Multi Bintang Indonesia, Tbk	2017	0,59170654	0	0	1
57	MLBI	PT. Multi Bintang Indonesia, Tbk	2018	0,83820998	0	0	1
58	MLBI	PT. Multi Bintang Indonesia, Tbk	2019	0,93706294	0	0	1
59	MLBI	PT. Multi Bintang Indonesia, Tbk	2020	0,34558824	0	0	1
60	MLBI	PT. Multi Bintang Indonesia, Tbk	2021	0,34558824	0	0	1
61	MYOR	PT. Mayora Indah, Tbk	2017	0,29577465	0,0252199	0,590708386	0
62	MYOR	PT. Mayora Indah, Tbk	2018	0,35064935	0,0252199	0,590708386	0
63	MYOR	PT. Mayora Indah, Tbk	2019	0,3258427	0,0252199	0,590708386	0
64	MYOR	PT. Mayora Indah, Tbk	2020	0,32608696	0,0252199	0,590708386	0
65	MYOR	PT. Mayora Indah, Tbk	2021	0,98113208	0,0252199	0,590708386	0
66	PCAR	PT. Prima Cakrawala Abadi, Tbk	2017	0	0	0,356406847	0

67	PCAR	PT. Prima Cakrawala Abadi, Tbk	2018	0	0	0,356406847	0
68	PCAR	PT. Prima Cakrawala Abadi, Tbk	2019	0	0	0,356406847	0
69	PCAR	PT. Prima Cakrawala Abadi, Tbk	2020	0	0	0,356406847	0
70	PCAR	PT. Prima Cakrawala Abadi, Tbk	2021	0	0	0,356406847	0
71	ROTI	PT. Nippon Indosari Corporindo, Tbk	2017	0,49638467	0	0,257733753	1
72	ROTI	PT. Nippon Indosari Corporindo, Tbk	2018	0,34841468	0	0,257733753	1
73	ROTI	PT. Nippon Indosari Corporindo, Tbk	2019	0,11807669	0	0,257733753	1
74	ROTI	PT. Nippon Indosari Corporindo, Tbk	2020	0,71511951	0	0,257733753	1
75	ROTI	PT. Nippon Indosari Corporindo, Tbk	2021	1,0516157	0	0,257733753	1
76	SKBM	PT. Sekar Bumi, Tbk	2017	0,14880952	0,0666443	0,399264501	1
77	SKBM	PT. Sekar Bumi, Tbk	2018	0,14992504	0,0666443	0,399264501	1
78	SKBM	PT. Sekar Bumi, Tbk	2019	0,13757261	0,0666443	0,399264501	1
79	SKBM	PT. Sekar Bumi, Tbk	2020	0,24260068	0,0666443	0,399264501	1
80	SKBM	PT. Sekar Bumi, Tbk	2021	0,12204052	0,0666443	0,399264501	1
81	SKLT	PT. Sekar Laut, Tbk	2017	0,14705882	0,0666443	0,362009213	1
82	SKLT	PT. Sekar Laut, Tbk	2018	0,14992504	0,0666443	0,362009213	1
83	SKLT	PT. Sekar Laut, Tbk	2019	0,13757261	0,0823326	0,36164493	1
84	SKLT	PT. Sekar Laut, Tbk	2020	0,24260068	0,0823326	0,36164493	1
85	SKLT	PT. Sekar Laut, Tbk	2021	0,24260068	0,0823326	0,36164493	1
86	STTP	PT. Siantar Top, Tbk	2017	0	0,0318708	0,567633969	0
87	STTP	PT. Siantar Top, Tbk	2018	0	0,0318708	0,567633969	0
88	STTP	PT. Siantar Top, Tbk	2019	0	0,0318708	0,567633969	0
89	STTP	PT. Siantar Top, Tbk	2020	0	0,0318708	0,567633969	0
90	STTP	PT. Siantar Top, Tbk	2021	0	0,0318708	0,567633969	0
91	TBLA	PT. Tunas Baru Lampung, Tbk	2017	0,16468134	0,0875311	0,998391913	0
92	TBLA	PT. Tunas Baru Lampung, Tbk	2018	0,31725888	0,0875311	0,998391913	0
93	TBLA	PT. Tunas Baru Lampung, Tbk	2019	0,20148291	0,0875311	0,998391913	0
94	TBLA	PT. Tunas Baru Lampung, Tbk	2020	0,19496218	0,0875311	0,998391913	0
95	TBLA	PT. Tunas Baru Lampung, Tbk	2021	0,16594756	0,0875311	0,998391913	0
96	ULTJ	PT. Ultrajaya Milk Industry and Trading Company, Tbk	2017	0,16393443	0,0338437	0,521327991	0
97	ULTJ	PT. Ultrajaya Milk Industry and Trading Company, Tbk	2018	0,2	0,0345085	0,560967881	0
98	ULTJ	PT. Ultrajaya Milk Industry and Trading Company, Tbk	2019	0,13483146	0,0360142	0,54181137	0
99	ULTJ	PT. Ultrajaya Milk Industry and Trading Company, Tbk	2020	0,12	0,0695713	0,213986954	0
100	ULTJ	PT. Ultrajaya Milk Industry and Trading Company, Tbk	2021	0,98360656	0,0484611	0,415389156	0

No	Nama Perusahaan	DPR				
		2017	2018	2019	2020	2021
1	PT. Tiga Pilar Sejahtera Food, Tbk	0	0	0	0	0
2	PT. Tri Bayan Tirta, Tbk	0	0	0	0	0
3	PT. Campina Ice Cream Industry, Tbk	0	0	0	0,936	0,412
4	PT. Wilmar Cahaya Indonesia, Tbk	0,829	0,288	0,276	0,327	0,318
5	PT. Sariguna Primatirta, Tbk	0	0	0	0	0
6	PT. Wahana Interfood Nusantara, Tbk	0	0	0	0	0
7	PT. Delta Djakarta, Tbk	0	0	0,655	3,084	2,723
8	PT. Buyung Poetra Sembada, Tbk	0,5	0,316	0,273	0,75	0
9	PT. Indofood CBP Sukses Makmur, Tbk	0,472	0,561	0,451	0,381	0,392
10	PT. Indofood Sukses Makmur, Tbk	0,495	0,5	0,422	0,378	0,32
11	PT. Mulia Boga Raya, Tbk	0	0	1,255	1,24	1,037
12	PT. Multi Bintang Indonesia, Tbk	0,592	0,838	0,937	0,346	0,346
13	PT. Mayora Indah, Tbk	0,296	0,351	0,326	0,326	0,981
14	PT. Prima Cakrawala Abadi, Tbk	0	0	0	0	0
15	PT. Nippon Indosari Corporindo, Tbk	0,496	0,348	0,118	0,715	1,052
16	PT. Sekar Bumi, Tbk	0,149	0,15	0,138	0,243	0,122
17	PT. Sekar Laut, Tbk	0,147	0,15	0,138	0,243	0,243
18	PT. Siantar Top, Tbk	0	0	0	0	0
19	PT. Tunas Baru Lampung, Tbk	0,165	0,317	0,201	0,195	0,166
20	PT. Ultrajaya Milk Industry and Trading Company, Tbk	0,164	0,2	0,135	0,12	0,098

No	Nama Perusahaan	MAN				
		2017	2018	2019	2020	2021
1	PT. Tiga Pilar Sejahtera Food, Tbk	0	0	0	0	0
2	PT. Tri Bayan Tirta, Tbk	0,022	0,022	0,022	0,022	0,022
3	PT. Campina Ice Cream Industry, Tbk	1	1	1	1	1
4	PT. Wilmar Cahaya Indonesia, Tbk	0,008	0,008	0,008	0	0,002
5	PT. Sariguna Primatirta, Tbk	0	0	0	0	0
6	PT. Wahana Interfood Nusantara, Tbk	0	0	0	0	0
7	PT. Delta Djakarta, Tbk	0	0	0	0	0
8	PT. Buyung Poetra Sembada, Tbk	0,084	0,05	0,338	0,35	0,35
9	PT. Indofood CBP Sukses Makmur, Tbk	0	0	0	0	0
10	PT. Indofood Sukses Makmur, Tbk	0	0	0	0	0
11	PT. Mulia Boga Raya, Tbk	1	1	0,181	0,181	0,181
12	PT. Multi Bintang Indonesia, Tbk	0	0	0	0	0
13	PT. Mayora Indah, Tbk	0,252	0,252	0,252	0,252	0,252
14	PT. Prima Cakrawala Abadi, Tbk	0	0	0	0	0
15	PT. Nippon Indosari Corporindo, Tbk	0	0	0	0	0
16	PT. Sekar Bumi, Tbk	0,007	0,007	0,007	0,007	0,007
17	PT. Sekar Laut, Tbk	0,007	0,007	0,008	0,008	0,008
18	PT. Siantar Top, Tbk	0,032	0,032	0,032	0,032	0,032
19	PT. Tunas Baru Lampung, Tbk	0,002	0,002	0,002	0,002	0,002
20	PT. Ultrajaya Milk Industry and Trading Company, Tbk	0,479	0,439	0,458	0,696	0,585

No	Nama Perusahaan	INST				
		2017	2018	2019	2020	2021
1	PT. Tiga Pilar Sejahtera Food, Tbk	0,064	0,064	0	0,651	0,651
2	PT. Tri Bayan Tirta, Tbk	0,758	0,758	0,758	0,758	0,758
3	PT. Campina Ice Cream Industry, Tbk	0	0	0	0	0
4	PT. Wilmar Cahaya Indonesia, Tbk	0,938	0,938	0,938	0,946	0,946
5	PT. Sariguna Primatirta, Tbk	0,813	1	0,813	0,813	0,813
6	PT. Wahana Interfood Nusantara, Tbk	1	1	0,531	1	0,334
7	PT. Delta Djakarta, Tbk	0,233	0,233	0,263	0,263	0,263
8	PT. Buyung Poetra Sembada, Tbk	0,916	0,95	0,662	0,65	0,65
9	PT. Indofood CBP Sukses Makmur, Tbk	0,805	0,805	0,805	0,805	0,805
10	PT. Indofood Sukses Makmur, Tbk	0	0	0	0	0
11	PT. Mulia Boga Raya, Tbk	0	0	0,133	0,711	0,711
12	PT. Multi Bintang Indonesia, Tbk	0	0	0	0	0
13	PT. Mayora Indah, Tbk	0,591	0,591	0,591	0,591	0,591
14	PT. Prima Cakrawala Abadi, Tbk	0,356	0,356	0,356	0,356	0,356
15	PT. Nippon Indosari Corporindo, Tbk	0,258	0,258	0,258	0,258	0,258
16	PT. Sekar Bumi, Tbk	0,399	0,399	0,399	0,414	0,399
17	PT. Sekar Laut, Tbk	0,362	0,362	0,362	0,362	0,362
18	PT. Siantar Top, Tbk	0,568	0,568	0,568	0,568	0,568
19	PT. Tunas Baru Lampung, Tbk	0,998	0,998	0,998	0,998	0,998
20	PT. Ultrajaya Milk Industry and Trading Company, Tbk	0,521	0,561	0,542	0,214	0,415

No	Nama Perusahaan	ASG				
		2017	2018	2019	2020	2021
1	PT. Tiga Pilar Sejahtera Food, Tbk	1	1	1	0	0
2	PT. Tri Bayan Tirta, Tbk	0	0	0	0	0
3	PT. Campina Ice Cream Industry, Tbk	0	0	0	0	0
4	PT. Wilmar Cahaya Indonesia, Tbk	1	1	1	1	1
5	PT. Sariguna Primatirta, Tbk	0	0	0	0	0
6	PT. Wahana Interfood Nusantara, Tbk	0	0	0	0	1
7	PT. Delta Djakarta, Tbk	1	1	1	1	1
8	PT. Buyung Poetra Sembada, Tbk	0	0	0	0	0
9	PT. Indofood CBP Sukses Makmur, Tbk	0	0	0	0	0
10	PT. Indofood Sukses Makmur, Tbk	1	1	1	1	1
11	PT. Mulia Boga Raya, Tbk	0	0	0	0	0
12	PT. Multi Bintang Indonesia, Tbk	1	1	1	1	1
13	PT. Mayora Indah, Tbk	0	0	0	0	0
14	PT. Prima Cakrawala Abadi, Tbk	0	0	0	0	0
15	PT. Nippon Indosari Corporindo, Tbk	1	1	1	1	1
16	PT. Sekar Bumi, Tbk	1	1	1	1	1
17	PT. Sekar Laut, Tbk	1	1	1	1	1
18	PT. Siantar Top, Tbk	0	0	0	0	0
19	PT. Tunas Baru Lampung, Tbk	0	0	0	0	0
20	PT. Ultrajaya Milk Industry and Trading Company, Tbk	0	0	0	0	0

CEM

Dependent Variable: Y
 Method: Panel Least Squares
 Date: 10/17/22 Time: 19:01
 Sample: 2017 2021
 Periods included: 5
 Cross-sections included: 20
 Total panel (balanced) observations: 100

Variable	Coefficient	Std. Error	t-Statistic	Prob.
C	0.317732	0.127724	2.487651	0.0146
X1	-0.289390	0.359632	-0.804685	0.4230
X2	-0.117917	0.170612	-0.691138	0.4911
X3	0.189516	0.114033	1.661937	0.0998
R-squared	0.065309	Mean dependent var		0.320250
Adjusted R-squared	0.036100	S.D. dependent var		0.487247
S.E. of regression	0.478371	Akaike info criterion		1.402319
Sum squared resid	21.96856	Schwarz criterion		1.506526
Log likelihood	-66.11596	Hannan-Quinn criter.		1.444493
F-statistic	2.235912	Durbin-Watson stat		0.690554
Prob(F-statistic)	0.088987			

fem

Dependent Variable: Y
 Method: Panel Least Squares
 Date: 10/17/22 Time: 19:02
 Sample: 2017 2021
 Periods included: 5
 Cross-sections included: 20
 Total panel (balanced) observations: 100

Variable	Coefficient	Std. Error	t-Statistic	Prob.
C	0.406208	0.433881	0.936221	0.3521
X1	-1.231776	0.516682	-2.384012	0.0196
X2	-0.035315	0.562498	-0.062783	0.9501
X3	-0.020630	0.432294	-0.047721	0.9621

Effects Specification

Cross-section fixed (dummy variables)

R-squared	0.482981	Mean dependent var	0.320250
Adjusted R-squared	0.335262	S.D. dependent var	0.487247
S.E. of regression	0.397260	Akaike info criterion	1.190182

uji chow

Redundant Fixed Effects Tests

Equation: Untitled

Test cross-section fixed effects

Effects Test	Statistic	d.f.	Prob.
Cross-section F	3.273910	(19,77)	0.0001
Cross-section Chi-square	59.213720	19	0.0000

Cross-section fixed effects test equation:

Dependent Variable: Y

Method: Panel Least Squares

Date: 10/17/22 Time: 19:04

Sample: 2017 2021

Periods included: 5

Cross-sections included: 20

Total panel (balanced) observations: 100

model sesuai fem

antara cem dan fem dan fem hasil nya yg oke fem

uji perbandingan random dan fix

rem

Dependent Variable: Y

Method: Panel EGLS (Cross-section random effects)

Date: 10/17/22 Time: 19:05

Sample: 2017 2021

Periods included: 5

Cross-sections included: 20

Total panel (balanced) observations: 100

Swamy and Arora estimator of component variances

Variable	Coefficient	Std. Error	t-Statistic	Prob.
C	0.343294	0.171652	1.999944	0.0483
X1	-0.783169	0.367833	-2.129145	0.0358
X2	-0.087522	0.225066	-0.388875	0.6982
X3	0.148734	0.153332	0.970015	0.3345

Effects Specification

	S.D.	Rho
Cross-section random	0.244411	0.2746
Idiosyncratic random	0.397260	0.7254

Weighted Statistics

R-squared	0.067017	Mean dependent var	0.188297
-----------	----------	--------------------	----------

Uji hausman
 Correlated Random Effects - Hausman Test
 Equation: Untitled
 Test cross-section random effects

Test Summary	Chi-Sq. Statistic	Chi-Sq. d.f.	Prob.
Cross-section random	8.032284	3	0.0453

Cross-section random effects test comparisons:

Variable	Fixed	Random	Var(Diff.)	Prob.
X1	-1.231776	-0.783169	0.131659	0.2163
X2	-0.035315	-0.087522	0.265750	0.9193
X3	-0.020630	0.148734	0.163367	0.6752

Cross-section random effects test equation:

Dependent Variable: Y
 Method: Panel Least Squares
 Date: 10/17/22 Time: 19:06
 Sample: 2017 2021
 Periods included: 5
 Cross-sections included: 20
 Total panel (balanced) observations: 100

Variable	Coefficient	Std. Error	t-Statistic	Prob.
C	0.406208	0.433881	0.936221	0.3521
X1	-1.231776	0.516682	-2.384012	0.0196
X2	-0.035315	0.562498	-0.062783	0.9501
X3	-0.020630	0.432294	-0.047721	0.9621

Effects Specification

Cross-section fixed (dummy variables)

R-squared	0.482981	Mean dependent var	0.320250
Adjusted R-squared	0.335262	S.D. dependent var	0.487247
S.E. of regression	0.397260	Akaike info criterion	1.190182
Sum squared resid	12.15177	Schwarz criterion	1.789371
Log likelihood	-36.50910	Hannan-Quinn criter.	1.432685
F-statistic	3.269582	Durbin-Watson stat	1.129244
Prob(F-statistic)	0.000064		

Uji hausman

Correlated Random Effects - Hausman Test

Equation: Untitled

Test cross-section random effects

Test Summary	Chi-Sq. Statistic	Chi-Sq. d.f.	Prob.
Cross-section random	8.032284	3	0.0453

Cross-section random effects test comparisons:

Variable	Fixed	Random	Var(Diff.)	Prob.
X1	-1.231776	-0.783169	0.131659	0.2163
X2	-0.035315	-0.087522	0.265750	0.9193
X3	-0.020630	0.148734	0.163367	0.6752

Cross-section random effects test equation:

Dependent Variable: Y

Method: Panel Least Squares

Date: 10/17/22 Time: 19:07

Sample: 2017 2021

Periods included: 5

Cross-sections included: 20

Total panel (balanced) observations: 100

Variable	Coefficient	Std. Error	t-Statistic	Prob.
C	0.406208	0.433881	0.936221	0.3521
X1	-1.231776	0.516682	-2.384012	0.0196
X2	-0.035315	0.562498	-0.062783	0.9501
X3	-0.020630	0.432294	-0.047721	0.9621

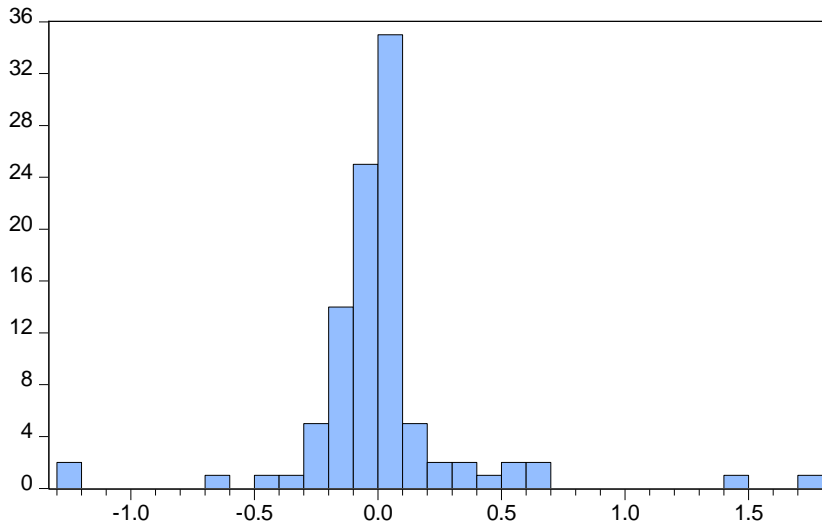
Effects Specification

Cross-section fixed (dummy variables)

R-squared	0.482981	Mean dependent var	0.320250
Adjusted R-squared	0.335262	S.D. dependent var	0.487247
S.E. of regression	0.397260	Akaike info criterion	1.190182
Sum squared resid	12.15177	Schwarz criterion	1.789371
Log likelihood	-36.50910	Hannan-Quinn criter.	1.432685
F-statistic	3.269582	Durbin-Watson stat	1.129244
Prob(F-statistic)	0.000064		

Uji asumsi klasik fem

Uji normalitas



Series: Standardized Residuals	
Sample 2017 2021	
Observations 100	
Mean	6.66e-18
Median	0.000000
Maximum	1.791847
Minimum	-1.293058
Std. Dev.	0.350350
Skewness	1.158082
Kurtosis	14.19883
Jarque-Bera	544.9100
Probability	0.000000

Uji multikoleritas

	X1	X2	X3
		-	-
		0.19579066707	0.12967355422
X1	1	74794	75343
		-	-
X2	0.19579066707	1	0.45847409412
	74794		50796
			-
X3	0.12967355422	0.45847409412	1
	75343	50796	

Uji heteroskedatistas

Dependent Variable: RESABS
 Method: Panel Least Squares
 Date: 10/17/22 Time: 19:13
 Sample: 2017 2021
 Periods included: 5
 Cross-sections included: 20
 Total panel (balanced) observations: 100

Variable	Coefficient	Std. Error	t-Statistic	Prob.
C	0.215454	0.079236	2.719136	0.0778
X1	-0.201803	0.223105	-0.904520	0.3680
X2	-0.170544	0.105843	-1.611291	0.1104
X3	0.110500	0.070743	1.561987	0.1216
R-squared	0.100208	Mean dependent var		0.165992
Adjusted R-squared	0.072089	S.D. dependent var		0.308080

S.E. of regression	0.296768	Akaike info criterion	0.447446
Sum squared resid	8.454843	Schwarz criterion	0.551653
Log likelihood	-18.37231	Hannan-Quinn criter.	0.489621
F-statistic	3.563772	Durbin-Watson stat	0.510622
Prob(F-statistic)	0.017027		

Uji autokolerasi

R-squared	0.482981	Mean dependent var	0.320250
Adjusted R-squared	0.335262	S.D. dependent var	0.487247
S.E. of regression	0.397260	Akaike info criterion	1.190182
Sum squared resid	12.15177	Schwarz criterion	1.789371
Log likelihood	-36.50910	Hannan-Quinn criter.	1.432685
F-statistic	3.269582	Durbin-Watson stat	1.129244
Prob(F-statistic)	0.000064		

Uji fem

Dependent Variable: Y
Method: Panel Least Squares
Date: 10/17/22 Time: 19:16
Sample: 2017 2021
Periods included: 5
Cross-sections included: 20
Total panel (balanced) observations: 100

Variable	Coefficient	Std. Error	t-Statistic	Prob.
C	0.406208	0.433881	0.936221	0.3521
X1	-1.231776	0.516682	-2.384012	0.0196
X2	-0.035315	0.562498	-0.062783	0.9501
X3	-0.020630	0.432294	-0.047721	0.9621

Effects Specification

Cross-section fixed (dummy variables)

R-squared	0.482981	Mean dependent var	0.320250
Adjusted R-squared	0.335262	S.D. dependent var	0.487247
S.E. of regression	0.397260	Akaike info criterion	1.190182
Sum squared resid	12.15177	Schwarz criterion	1.789371
Log likelihood	-36.50910	Hannan-Quinn criter.	1.432685
F-statistic	3.269582	Durbin-Watson stat	1.129244
Prob(F-statistic)	0.000064		