

Lampiran

Lampiran 1

DAFTAR SAMPEL PERUSAHAAN YANG GO PUBLIC TAHUN 2016-2018

No	Kode Perusahaan	Nama Perusahaan
1	ARTO	Bank Artos Indonesia Tbk
2	MTRA	Mitra Permuda Tbk
3	MARI	Mahaka Radio Integra Tbk
4	POWR	Cikarang Listrindo Tbk
5	DAYA	Duta Intidaya Tbk
6	CASA	Capital Financial Indonesia Tbk
7	WSBP	Waskita Beton Precast Tbk
8	AGII	Aneka Gas Industri Tbk
9	PBSA	Paramita Bangun Sarana Tbk
19	PRDA	Prodia Widyahusada Tbk
11	BOGA	Bintang Oto Tbk
12	CARS	Industri Dan Perdagangan Bintraco Dharma Tbk

13	MINA	Sanurhasta Mitra Tbk
14	TGRA	Terregra Asia Energy Tbk
15	FINN	First Indo American Leasing Tbk
16	FIRE	Alta Energy Investema Tbk
17	KMTR	Kirana Megantara Tbk
18	HRTA	Hartadinata Abadi Tbk
19	WOOD	Integra Indocabinet Tbk
20	HOKI	Buyung Poetra Sembada Tbk
21	MABA	Marga Abhinayaabadi Tbk
22	MPOW	Megapower Makmur Tbk
23	MARK	Mark Dynamics Indonesia Tbk
24	NASA	Ayana Land International Tbk
25	MDKI	Emdeki Utama Tbk
26	BELL	Trisula Textile Industries Tbk
27	KIOS	Kioson Komersial Indonesia Tbk
28	ZINC	Kapuas Prima Coal Tbk
29	MCAS	M Cash Integrasi Tbk
30	JMAS	Asuransi Jiwa Syariah Jasa Mitra Abadi Tbk
31	CAMP	Campina Ice Cream Industry Tbk
32	IPCM	Jasa Armada Indonesia Tbk
33	LKCM	LCK Global Kedaton Tbk
34	BOSS	Borneo Olah Sarana Sukses Tbk

35	HELI	Jaya Trishindo Tbk
36	JSKY	Sky Energy Indonesia Tbk
37	INPS	Indah Perkasa Sentosa Tbk
38	GHON	Gihon Telekomunikasi Indonesia Tbk
39	DFAM	Dafam Property Indonesia Tbk
40	NICK	Chamic Capital Tbk
41	BTPS	Bank Tabungan Pensiunan Nasional Syariah Tbk
42	SPTO	Surya Pertiwi Tbk
43	PRIM	Royal Prima Tbk
44	HEAL	Medikaloka Hermina Tbk
45	PZZA	Sarimelati Kencana Tbk
46	TRUK	Guna Timur Raya Tbk
47	KPAL	Steadfast Marine Tbk
48	SWAT	Sriwahana Aditya Karya Tbk
49	TNCA	Trimuda Nuansa Citra Tbk
50	MAPA	Map Aktif Adiperkasa Tbk
51	TCPI	Transcoal Pacific Tbk
52	BPTR	Batavia Prosperindo Trans Tbk
53	RISE	Jaya Sukses Makmur Sentosa Tbk
54	POLL	Pollux Properti Indonesia Tbk
55	NUSA	Sinergi Megah Internusa Tbk
56	MGRO	Mahkota Group Tbk

57	NFCX	Nfc Indonesia Tbk
58	FILM	Md Pictures Tbk
59	ANDI	Andira Agro Tbk
60	LAND	Trimitra Propertindo Tbk
61	MOLI	Madusari Murni Indah Tbk
62	DIGI	Arkadia Digital Media Tbk
63	PANI	Pratama Abadi Nusa Industri Tbk
64	CITY	Natura City Developments Tbk
65	SAPX	Satria Antaran Prima Tbk
66	SURE	Super Energy Tbk
67	KPAS	Cotton Indo Ariesta Tbk
68	MPRO	Mulia Investama Tbk
69	HKMU	Hk Metals Utama Tbk
70	GOOD	Garudafood Putra Putri Jaya Tbk
71	DUCK	Jaya Bersama Indo Tbk
72	SKRN	Superkrane Mitra Utama Tbk
73	YELO	Yeloo Integra Datanet Tbk
74	CAKK	Cahayaputra Asa Keramik Tbk
75	SATU	Kota Satu Property Tbk
76	SOSS	Shield On Service Tbk
77	DEAL	Dewata Freightinternasional Tbk
78	POLA	Pool Advista Finance Tbk

79	DIVA	Distribusi Voucher Nusantara Tbk
80	LUCK	Sentral Mitra Informatika Tbk
81	SOTS	Satria Mega Kencana Tbk
82	URBN	Urban Jakarta Propertindo Tbk
83	ZONE	Mega Perintis Tbk
84	BRIS	Bank Bri Syariah Tbk

Lampiran 2

Data Ukuran perusahaan

no	kode	total aset	ln(total aset)
1	ARTO	Rp 730.210.367.267	11,8634
2	MTRA	Rp 158.370.619.908	11,1997
3	MARI	Rp 170.797.158.349	11,2325
4	BGTG	Rp 1.974.416.000.000	12,2954
5	DAYA	Rp 126.998.196.000	11,1038
6	CASA	Rp 835.623.379.906	11,9220
7	WSBP	Rp 4.332.409.010.247	12,6367
8	AGII	Rp 4.953.451.000.000	12,6949
9	PBSA	Rp 756.763.554.339	11,8790
10	PRDA	Rp 577.866.028.648	11,7618
11	BOGA	Rp 167.598.076.911	11,2243
12	CARS	Rp 6.301.885.208.288	12,7995
13	MINA	Rp 117.113.172.026	11,0686
14	TGRA	Rp 283.434.432.020	11,4525

15	FINN	Rp 866.961.337.809	11,9380
16	FIRE	Rp 333.255.213.699	11,5228
17	KMTR	Rp 3.806.822.723.198	12,5806
18	HRTA	Rp 1.071.106.873.223	12,0298
19	WOOD	Rp 3.081.874.210.495	12,4888
20	HOKI	Rp 370.245.134.305	11,5685
21	MABA	Rp 621.066.261.145	11,7931
22	MPOW	Rp 350.204.022.000	11,5443
23	MARK	Rp 170.937.642.460	11,2328
24	NASA	Rp 890.711.784.341	11,9497
25	MDKI	Rp 331.740.000.000	11,5208
26	BELL	Rp 387.981.312.196	11,5888
27	KIOS	Rp 35.738.968.439	10,5531
28	ZINC	Rp 556.844.265.541	11,7457
29	MCAS	Rp 15.443.423.626	10,1887
30	JMAS	Rp 70.822.435.698	10,8502
31	CAMP	Rp 1.031.041.060.010	12,0133
32	IPCM	Rp 598.370.195.000	11,7770
33	LKCM	Rp 94.240.918.289	10,9742
34	BOSS	Rp 320.301.794.710	11,5056
35	HELI	Rp 219.910.784.079	11,3422
36	JSKY	Rp 448.586.786.899	11,6518
37	INPS	Rp 434.160.800.338	11,6377
38	GHON	Rp 348.559.333.000	11,5423

39	DFAM	Rp 280.918.943.651	11,4486
40	NICK	Rp 45.501.486.300	10,6580
41	BTPS	Rp 9.156.522.000.000	12,9617
42	SPTO	Rp 2.019.880.352.439	12,3053
43	PRIM	Rp 309.642.473.255	11,4909
44	HEAL	Rp 3.346.625.000.000	12,5246
45	PZZA	Rp 1.494.005.079.036	12,1744
46	TRUK	Rp 58.725.557.698	10,7688
47	KPAL	Rp 665.787.472.977	11,8233
48	SWAT	Rp 412.437.590.778	11,6154
49	TNCA	Rp 21.571.180.744	10,3339
50	MAPA	Rp 2.795.382.533.000	12,4464
51	TCPI	Rp 844.995.000.000	11,9269
52	BPTR	Rp 330.461.956.336	11,5191
53	RISE	Rp 1.780.507.425.834	12,2505
54	POLL	Rp 3.312.521.388.980	12,5202
55	NUSA	Rp 667.291.896.400	11,8243
56	MGRO	Rp 964.712.620.730	11,9844
57	NFCX	Rp 23.127.386.946	10,3641
58	FILM	Rp 201.384.010.515	11,3040
59	ANDI	Rp 481.401.000.000	11,6825
60	LAND	Rp 406.536.043.622	11,6091
61	MOLI	Rp 1.517.616.675.633	12,1812
62	DIGI	Rp 16.126.817.162	10,2075

63	PANI	Rp 76.254.520.373	10,8823
64	CITY	Rp 561.747.787.335	11,7495
65	SAPX	Rp 43.972.647.486	10,6432
66	SURE	Rp 577.144.513.344	11,7613
67	KPAS	Rp 188.274.009.952	11,2748
68	MPRO	Rp 2.191.335.567.000	12,3407
69	HKMU	Rp 1.049.681.646.049	12,0211
70	GOOD	Rp 3.564.218.091.628	12,5520
71	DUCK	Rp 528.942.657.230	11,7234
72	SKRN	Rp 1.232.698.283.612	12,0909
73	YELO	Rp 5.610.250.011	9,7490
74	CAKK	Rp 250.467.504.086	11,3988
75	SATU	Rp 269.706.623.605	11,4309
76	SOSS	Rp 168.805.173.485	11,2274
77	DEAL	Rp 149.748.217.276	11,1754
78	POLA	Rp 273.899.982.725	11,4376
79	DIVA	Rp 146.551.502.847	11,1660
80	LUCK	Rp 100.336.875.256	11,0015
81	SOTS	Rp 359.193.918.633	11,5553
82	URBN	Rp 1.022.351.229.000	12,0096
83	ZONE	Rp 317.138.887.336	11,5012
84	BRIS	Rp31.543.384.000.000	13,4989

Lampiran 3

Data Tipe Industri

No	kode	tipe industri	no	kode	tipe industri	no	kode	tipe industri	no	kode	tipe industri
1	ARTO	1	22	MPOW	0	43	PRIM	1	64	CITY	1
2	MTRA	0	23	MARK	0	44	HEAL	1	65	SAPX	0
3	MARI	1	24	NASA	1	45	PZZA	0	66	SURE	0
4	BGTG	1	25	MDKI	1	46	TRUK	0	67	KPAS	1
5	DAYA	0	26	BELL	0	47	KPAL	0	68	MPRO	1
6	CASA	1	27	KIOS	1	48	SWAT	0	69	HKMU	0
7	WSBP	1	28	ZINC	0	49	TNCA	0	70	GOOD	0
8	AGII	0	29	MCAS	1	50	MAPA	0	71	DUCK	0
9	PBSA	1	30	JMAS	1	51	TCPI	0	72	SKRN	1
10	PRDA	1	31	CAMP	0	52	BPTR	0	73	YELO	1
11	BOGA	1	32	IPCM	1	53	RISE	1	74	CAKK	0
12	CARS	1	33	LKCM	1	54	POLL	1	75	SATU	1
13	MINA	1	34	BOSS	0	55	NUSA	0	76	SOSS	0
14	TGRA	0	35	HELI	0	56	MGRO	0	77	DEAL	0
15	FINN	1	36	JSKY	0	57	NFCX	1	78	POLA	1
16	FIRE	0	37	INPS	0	58	FILM	1	79	DIVA	1

17	KMTR	1	38	GHON	1	59	ANDI	0	80	LUCK	1
18	HRTA	1	39	DFAM	1	60	LAND	0	81	SOTS	1
19	WOOD	0	40	NICK	0	61	MOLI	1	82	URBN	1
20	HOKI	0	41	BTPS	1	62	DIGI	1	83	ZONE	0
21	MABA	0	42	SPTO	0	63	PANI	0	84	BRIS	1

Lampiran 4

Data Gender Diversity

no	Kode	direksi wanita	no	kode	direksi wanita	no	kode	direksi wanita	No	kode	direksi wanita
1	ARTO	1	22	MPOW	0	43	PRIM	0	64	CITY	0
2	MTRA	0	23	MARK	0	44	HEAL	0	65	SAPX	0
3	MARI	1	24	NASA	0	45	PZZA	0	66	SURE	0
4	BGTG	1	25	MDKI	0	46	TRUK	0	67	KPAS	1
5	DAYA	1	26	BELL	1	47	KPAL	0	68	MPRO	0
6	CASA	0	27	KIOS	0	48	SWAT	1	69	HKMU	1
7	WSBP	0	28	ZINC	0	49	TNCA	0	70	GOOD	0
8	AGII	1	29	MCAS	1	50	MAPA	0	71	DUCK	1
9	PBSA	1	30	JMAS	0	51	TCPI	0	72	SKRN	0
10	PRDA	1	31	CAMP	0	52	BPTR	1	73	YELO	0
11	BOGA	0	32	IPCM	0	53	RISE	1	74	CAKK	1
12	CARS	0	33	LKCM	0	54	POLL	0	75	SATU	1

13	MINA	0	34	BOSS	0	55	NUSA	0	76	SOSS	0
14	TGRA	0	35	HELI	0	56	MGRO	0	77	DEAL	1
15	FINN	1	36	JSKY	1	57	NFCX	1	78	POLA	0
16	FIRE	1	37	INPS	1	58	FILM	1	79	DIVA	1
17	KMTR	1	38	GHON	1	59	ANDI	0	80	LUCK	1
18	HRTA	1	39	DFAM	1	60	LAND	0	81	SOTS	1
19	WOOD	0	40	NICK	0	61	MOLI	1	82	URBN	0
20	HOKI	1	41	BTPS	1	62	DIGI	0	83	ZONE	0
21	MABA	1	42	SPTO	1	63	PANI	1	84	BRIS	0

Lampiran 5

Data Proporsi Dewan Komisaris Independen

no	kode	jumlah dewan komisaris independen	jumlah dewan komisaris	proporsi dewan komisaris independen(%)
1	ARTO	2	3	0,6667
2	MTRA	1	3	0,3333
3	MARI	1	3	0,3333
4	BGTG	2	4	0,5000
5	DAYA	1	3	0,3333
6	CASA	1	2	0,5000
7	WSBP	2	4	0,5000
8	AGII	2	6	0,3333

9	PBSA	1	3	0,3333
10	PRDA	2	5	0,4000
11	BOGA	1	2	0,5000
12	CARS	1	3	0,3333
13	MINA	1	2	0,5000
14	TGRA	1	3	0,3333
15	FINN	1	3	0,3333
16	FIRE	1	2	0,5000
17	KMTR	1	3	0,3333
18	HRTA	1	3	0,3333
19	WOOD	2	4	0,5000
20	HOKI	1	3	0,3333
21	MABA	1	3	0,3333
22	MPOW	1	3	0,3333
23	MARK	1	2	0,5000
24	NASA	1	2	0,5000
25	MDKI	2	5	0,4000
26	BELL	1	3	0,3333
27	KIOS	1	3	0,3333
28	ZINC	1	3	0,3333
29	MCAS	1	3	0,3333
30	JMAS	2	4	0,5000
31	CAMP	1	3	0,3333
32	IPCM	1	3	0,3333

33	LKCM	1	3	0,3333
34	BOSS	1	3	0,3333
35	HELI	1	2	0,5000
36	JSKY	1	3	0,3333
37	INPS	1	2	0,5000
38	GHON	1	3	0,3333
39	DFAM	1	3	0,3333
40	NICK	1	3	0,3333
41	BTPS	2	4	0,5000
42	SPTO	1	3	0,3333
43	PRIM	1	2	0,5000
44	HEAL	2	6	0,3333
45	PZZA	1	3	0,3333
46	TRUK	1	2	0,5000
47	KPAL	1	3	0,3333
48	SWAT	1	2	0,5000
49	TNCA	1	2	0,5000
50	MAPA	1	3	0,3333
51	TCPI	1	2	0,5000
52	BPTR	1	2	0,5000
53	RISE	1	3	0,3333
54	POLL	1	3	0,3333
55	NUSA	1	3	0,3333
56	MGRO	1	3	0,3333

57	NFCX	1	3	0,3333
58	FILM	1	3	0,3333
59	ANDI	1	3	0,3333
60	LAND	1	2	0,5000
61	MOLI	2	7	0,2857
62	DIGI	1	3	0,3333
63	PANI	1	2	0,5000
64	CITY	1	3	0,3333
65	SAPX	1	2	0,5000
66	SURE	1	2	0,5000
67	KPAS	1	3	0,3333
68	MPRO	1	3	0,3333
69	HKMU	1	2	0,5000
70	GOOD	1	3	0,3333
71	DUCK	1	3	0,3333
72	SKRN	1	2	0,5000
73	YELO	1	3	0,3333
74	CAKK	1	2	0,5000
75	SATU	1	2	0,5000
76	SOSS	1	3	0,3333
77	DEAL	1	3	0,3333
78	POLA	1	2	0,5000
79	DIVA	1	3	0,3333
80	LUCK	1	2	0,5000

81	SOTS	1	3	0,3333
82	URBN	1	2	0,5000
83	ZONE	1	3	0,3333
84	BRIS	2	4	0,5000

Lampiran 6

Data Pengungkapan Intellectual Capital

no	kode	hc1	hc2	hc3	hc4	hc5	hc6	hc7	hc8	sc1	sc2	sc3	sc4	sc5	sc6	sc7	sc8	sc9	sc10	sc11	sc12	sc13	sc14	sc15	rc1	rc2	rc3	rc4	rc5	rc6	rc7	rc8	rc9	rc10	rc11	rc12	rc13	Σdi	total index	icd(%)		
1	ARTO	2	2	0	0	0	0	0	0	1	0	0	0	0	0	0	1	1	1	1	0	2	0	1	0	0	0	1	1	0	0	0	0	0	1	1	0	0	16	36	0,4444	
2	MTRA	2	2	0	0	0	0	0	0	0	0	0	0	0	0	0	1	0	0	1	0	0	0	2	0	0	0	1	1	0	0	0	0	0	0	0	1	1	0	12	36	0,3333
3	MARI	2	2	0	0	0	0	0	0	0	0	0	2	0	0	0	0	0	1	1	0	2	0	0	0	1	0	1	1	0	0	0	0	0	0	0	1	0	14	36	0,3889	
4	BGTG	2	2	0	0	0	1	1	0	0	0	0	0	0	0	0	0	1	1	0	0	2	0	2	0	0	0	1	0	0	0	0	0	0	0	0	1	0	14	36	0,3889	
5	DAYA	2	2	0	0	0	0	0	0	0	0	0	0	1	0	0	0	1	1	0	0	2	0	2	0	0	0	1	1	0	0	0	0	0	1	0	1	0	15	36	0,4167	
6	CASA	2	2	0	0	0	0	0	0	1	0	0	0	0	0	0	0	0	0	1	0	2	0	2	0	0	0	1	0	0	0	0	0	0	0	0	0	1	0	12	36	0,3333
7	WSBP	2	2	0	0	0	1	1	0	0	0	0	0	0	0	0	0	0	1	0	0	0	0	2	0	0	0	1	0	0	0	0	0	0	0	0	1	0	11	36	0,3056	
8	AGII	2	2	0	0	0	1	1	0	1	0	0	0	0	0	0	0	0	1	0	0	2	0	2	0	2	0	1	1	0	0	0	0	0	1	1	1	0	19	36	0,5278	
9	PBSA	2	2	0	0	0	0	0	0	0	0	0	0	0	0	0	0	0	1	0	0	2	0	0	0	0	0	1	0	0	0	0	0	0	0	0	0	0	8	36	0,2222	
10	PRDA	2	2	0	0	0	1	1	0	1	0	0	0	0	0	0	0	1	1	0	0	2	0	2	0	2	0	1	0	0	0	0	0	0	1	0	0	0	17	36	0,4722	
11	BOGA	2	2	0	0	0	0	0	0	0	0	0	0	0	0	0	0	0	0	1	0	2	0	2	0	0	0	1	0	0	0	0	0	0	0	0	1	0	11	36	0,3056	
12	CARS	2	2	0	0	0	1	1	0	0	0	0	0	0	0	0	0	1	0	1	0	2	0	2	0	1	0	1	1	0	0	0	0	0	0	0	1	0	16	36	0,4444	
13	MINA	2	2	0	0	0	0	0	0	0	0	0	0	0	0	0	0	0	0	1	0	2	0	2	0	0	0	1	0	0	0	0	0	0	0	0	0	0	10	36	0,2778	
14	TGRA	2	2	0	0	0	0	0	1	0	0	0	0	0	0	0	0	0	0	1	0	2	0	0	0	0	0	1	0	0	0	0	0	0	0	0	0	0	9	36	0,2500	
15	FINN	2	2	0	0	0	0	0	0	0	0	0	0	0	0	0	0	0	0	1	0	2	0	2	0	0	0	1	0	0	0	0	0	0	1	0	0	0	11	36	0,3056	
16	FIRE	2	2	0	0	0	0	0	0	0	0	0	0	0	0	0	0	0	0	1	0	2	0	0	0	0	0	1	0	0	0	0	0	0	0	0	0	8	36	0,2222		
17	KMTR	2	2	0	0	0	1	1	0	0	0	0	0	0	0	0	0	0	0	1	0	2	0	2	0	0	0	1	0	0	0	0	0	0	0	0	0	0	12	36	0,3333	
18	HRTA	2	2	0	0	0	1	0	0	0	0	0	0	0	0	0	0	0	0	1	0	2	0	2	0	1	0	1	0	0	0	0	0	0	0	0	0	0	12	36	0,3333	
19	WOOD	2	2	0	0	0	0	0	0	0	0	0	0	0	0	0	0	0	0	1	0	2	0	2	0	2	0	1	1	0	0	0	0	0	0	0	0	0	13	36	0,3611	
20	HOKI	2	2	0	0	0	1	1	0	0	0	0	0	0	0	0	0	1	0	1	0	2	0	2	1	2	0	1	1	0	0	0	0	0	0	0	1	0	18	36	0,5000	
21	MABA	2	2	0	0	0	0	0	0	1	0	0	0	0	0	0	0	0	1	1	0	2	0	2	1	0	0	1	0	0	0	0	0	0	0	0	1	0	14	36	0,3889	
22	MPOW	2	2	0	0	0	0	0	0	0	0	0	0	0	0	0	0	0	0	1	0	2	0	2	1	0	0	1	0	0	0	0	0	0	0	0	0	0	11	36	0,3056	

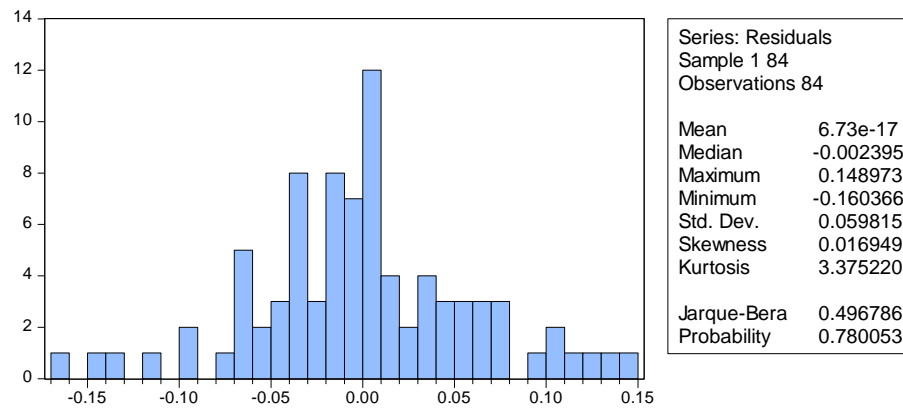
23	MARK	2	2	0	0	0	1	1	0	0	0	0	0	0	0	0	0	1	0	2	0	2	0	0	0	1	0	0	1	0	1	0	1	0	1	0	15	36	0,4167	
24	NASA	2	2	0	0	0	0	1	0	0	0	0	0	0	0	0	0	1	0	2	0	2	0	0	0	1	0	0	0	0	0	0	0	0	1	0	12	36	0,3333	
25	MDKI	2	2	0	0	0	1	0	0	0	0	0	0	0	0	0	0	1	0	2	0	2	0	1	0	1	1	0	0	0	0	0	0	0	0	0	13	36	0,3611	
26	BELL	2	2	0	0	0	1	1	0	1	0	0	1	0	0	0	0	1	0	2	0	2	1	0	0	1	0	0	0	0	0	1	0	0	0	0	16	36	0,4444	
27	KIOS	2	2	0	0	1	0	0	0	1	0	0	0	0	0	0	0	1	0	2	0	2	0	0	0	1	0	0	0	0	0	0	0	0	0	1	13	36	0,3611	
28	ZINC	2	2	0	0	0	1	1	0	0	0	0	0	0	0	0	0	1	0	2	0	2	0	0	0	1	0	0	0	0	0	0	0	0	0	0	12	36	0,3333	
29	MCAS	2	2	0	0	0	0	0	0	0	0	0	0	0	0	0	1	0	1	0	2	0	2	0	0	0	1	0	0	0	0	0	0	0	0	0	11	36	0,3056	
30	JMAS	2	2	0	0	0	0	0	0	0	0	0	0	0	0	0	1	0	1	0	2	0	2	0	0	0	1	0	0	0	0	0	0	0	1	0	12	36	0,3333	
31	CAMP	2	2	0	0	0	1	1	0	1	0	0	0	0	0	0	1	0	1	0	2	0	2	1	1	0	1	0	0	0	0	0	0	0	1	1	0	18	36	0,5000
32	IPCM	2	2	0	0	0	1	1	0	1	0	0	0	0	0	0	0	1	0	2	0	0	0	1	0	1	0	0	0	0	0	0	1	1	0	0	14	36	0,3889	
33	LKCM	2	2	0	0	0	1	1	0	0	0	0	0	0	0	0	0	1	0	2	0	0	0	1	0	1	0	0	0	0	0	0	0	0	1	0	12	36	0,3333	
34	BOSS	2	2	0	0	0	0	0	0	0	0	0	0	0	0	0	0	1	0	2	0	2	0	0	0	1	0	0	0	0	0	0	0	0	0	0	10	36	0,2778	
35	HELI	2	2	1	0	0	0	0	0	0	0	0	0	0	0	0	0	1	0	2	0	0	0	1	0	1	0	0	0	0	0	0	0	0	0	0	10	36	0,2778	
36	JSKY	2	2	0	0	0	1	1	0	0	0	0	0	0	0	0	1	0	1	0	2	0	2	0	1	0	1	0	0	0	0	0	0	0	0	0	14	36	0,3889	
37	INPS	2	2	0	0	0	0	0	0	0	0	0	0	0	0	0	1	0	1	0	2	0	2	0	1	0	1	0	0	0	0	0	0	0	1	0	13	36	0,3611	
38	GHON	2	2	0	0	0	0	0	0	0	0	0	0	0	0	0	0	1	0	2	0	2	0	0	0	1	0	0	0	0	0	0	0	0	0	0	10	36	0,2778	
39	DFAM	2	2	0	0	0	0	0	0	1	0	0	0	0	0	0	0	1	0	2	0	2	0	0	0	1	0	0	0	0	0	0	0	0	0	0	11	36	0,3056	
40	NICK	2	2	0	0	0	1	1	0	0	0	0	0	0	0	0	0	1	0	2	0	2	0	0	0	1	0	0	0	0	0	0	0	0	1	0	13	36	0,3611	
41	BTPS	2	2	0	0	0	1	1	0	0	0	0	0	0	0	0	0	1	0	2	0	2	0	0	0	1	0	0	0	0	0	1	0	0	0	0	13	36	0,3611	
42	SPTO	2	2	0	0	0	1	1	0	0	0	0	0	0	0	0	0	1	0	2	0	2	0	0	0	1	0	0	0	0	0	0	0	0	1	0	13	36	0,3611	
43	PRIM	2	2	0	0	0	0	0	0	1	0	0	0	0	0	0	0	1	0	2	0	2	0	0	0	1	0	0	0	0	0	1	0	1	0	13	36	0,3611		
44	HEAL	2	2	0	0	0	0	0	0	0	0	0	0	0	0	0	1	0	1	0	2	0	0	0	0	0	1	0	0	0	0	0	1	0	1	0	11	36	0,3056	
45	PZZA	2	2	0	0	0	1	1	0	0	0	0	0	0	0	0	0	1	0	2	0	2	0	0	0	1	0	0	0	0	0	1	0	1	0	14	36	0,3889		
46	TRUK	2	2	0	0	0	0	0	0	0	0	0	0	0	0	0	0	1	0	2	0	0	0	0	0	1	0	0	0	0	0	0	0	0	0	0	8	36	0,2222	
47	KPAL	2	2	0	0	0	1	1	0	0	0	0	0	0	0	0	0	1	0	2	0	2	0	0	0	1	0	0	0	0	0	0	0	0	0	0	12	36	0,3333	
48	SWAT	2	2	0	0	0	1	1	0	1	0	0	0	0	0	0	0	1	0	2	0	2	0	0	0	1	0	0	0	0	0	0	0	0	0	0	13	36	0,3611	
49	TNCA	2	2	0	0	0	0	0	0	1	0	0	0	0	0	0	0	1	0	2	0	2	0	0	0	1	0	0	0	0	0	0	0	1	0	12	36	0,3333		
50	MAPA	2	2	0	0	0	0	0	0	0	0	0	0	0	0	0	1	0	1	0	2	0	2	0	0	0	1	0	0	0	0	0	1	0	1	0	13	36	0,3611	
51	TCPI	2	2	0	0	0	1	1	0	0	0	0	0	0	0	0	1	0	1	0	2	0	2	0	0	0	1	0	0	0	0	0	0	0	0	0	13	36	0,3611	
52	BPTR	2	2	0	0	0	1	1	0	0	0	0	0	0	0	0	0	1	0	2	0	2	0	1	0	1	0	0	0	0	0	1	0	0	0	0	14	36	0,3889	

53	RISE	2	2	0	0	0	0	0	0	0	0	0	0	0	0	0	0	0	1	0	2	0	0	0	0	0	1	0	0	0	0	0	0	0	0	0	0	0	0	8	36	0,2222
54	POLL	2	2	0	0	0	0	0	0	0	0	0	0	0	0	0	0	0	1	0	2	0	2	0	0	0	1	0	0	0	0	0	0	0	1	0	1	0	12	36	0,3333	
55	NUSA	2	2	0	0	0	0	0	0	0	0	0	0	0	0	0	0	0	1	0	2	0	2	0	0	0	1	0	0	0	0	0	0	0	0	0	0	0	10	36	0,2778	
56	MGRO	2	2	0	0	1	1	1	0	0	0	0	0	0	0	0	0	0	1	0	2	0	2	0	0	0	1	0	0	0	0	0	0	0	0	0	0	0	13	36	0,3611	
57	NFCX	2	2	0	0	0	1	1	0	0	0	0	0	0	0	0	0	1	0	1	0	2	0	2	0	0	0	1	0	0	0	0	0	0	0	0	0	0	13	36	0,3611	
58	FILM	2	2	0	0	1	1	1	0	0	0	0	0	0	0	0	0	0	1	0	2	0	2	0	0	0	1	0	0	1	0	0	1	0	0	1	0	1	0	16	36	0,4444
59	ANDI	2	2	0	0	0	0	0	0	0	0	0	0	0	0	0	0	0	1	0	2	0	0	0	1	0	1	0	0	0	0	0	0	0	0	0	0	0	9	36	0,2500	
60	LAND	2	2	0	0	0	0	0	0	1	0	0	0	0	0	0	0	0	1	0	2	0	2	0	0	0	1	0	0	0	0	0	0	1	0	0	0	0	12	36	0,3333	
61	MOLI	2	2	0	0	0	1	1	0	1	0	0	0	0	0	0	0	0	1	0	2	0	2	0	1	0	1	0	0	0	0	0	0	1	0	0	0	0	15	36	0,4167	
62	DIGI	2	2	0	0	0	1	1	0	0	0	0	0	0	0	0	0	0	1	0	2	0	2	0	0	0	1	0	0	0	0	0	0	0	0	0	0	0	12	36	0,3333	
63	PANI	2	2	0	0	0	0	0	0	0	0	0	0	0	0	0	0	0	1	0	2	0	2	0	0	0	1	1	0	0	0	0	1	0	0	0	0	12	36	0,3333		
64	CITY	2	2	0	0	0	0	0	0	1	0	0	0	0	0	0	0	0	1	0	2	0	0	0	0	0	1	0	0	0	0	0	0	0	0	1	1	11	36	0,3056		
65	SAPX	2	2	0	0	0	1	1	0	0	0	0	0	0	0	0	0	1	0	1	0	2	0	2	0	0	0	1	0	0	0	0	0	0	0	0	0	0	13	36	0,3611	
66	SURE	2	2	0	0	0	0	0	0	1	0	0	0	0	0	0	0	0	1	0	2	0	2	0	0	0	1	0	0	0	0	0	0	0	0	0	0	0	11	36	0,3056	
67	KPAS	2	2	0	0	0	0	0	0	0	0	0	0	0	0	0	0	0	1	0	2	0	2	0	1	0	1	0	0	0	0	0	0	0	0	0	0	0	11	36	0,3056	
68	MPRO	2	2	0	0	0	1	1	0	1	0	0	0	0	0	0	0	0	1	0	2	0	2	0	0	0	1	0	0	0	0	0	0	0	0	0	0	0	13	36	0,3611	
69	HKMU	2	2	0	0	0	1	0	0	0	0	0	0	0	0	0	0	0	1	0	2	0	2	0	0	0	1	0	0	0	0	0	0	0	0	0	0	0	11	36	0,3056	
70	GOOD	2	2	0	0	0	0	0	0	1	0	0	0	0	0	0	0	1	0	1	0	2	0	2	1	0	0	1	0	0	0	0	0	1	0	1	0	15	36	0,4167		
71	DUCK	2	2	0	0	0	1	0	0	0	0	0	0	0	0	0	0	0	1	0	2	0	2	0	0	0	1	0	0	0	0	0	0	0	0	1	0	12	36	0,3333		
72	SKRN	2	2	0	0	0	1	1	0	1	0	0	0	0	0	0	0	0	1	0	2	0	2	0	1	0	1	0	0	0	0	0	1	1	0	0	16	36	0,4444			
73	YELO	2	2	0	0	0	0	0	0	1	0	0	0	0	0	0	0	0	1	0	2	0	2	0	0	0	1	0	0	0	0	0	0	0	0	1	0	12	36	0,3333		
74	CAKK	2	2	0	0	0	1	1	0	0	0	0	0	0	0	0	0	1	0	1	0	2	0	2	0	1	0	1	0	0	0	0	0	0	1	1	0	16	36	0,4444		
75	SATU	2	2	0	0	0	0	0	0	0	0	0	0	0	0	0	0	0	1	0	2	0	2	0	1	0	1	0	0	0	0	0	1	0	0	1	13	36	0,3611			
76	SOSS	2	2	0	0	0	0	0	0	0	0	0	0	0	0	0	0	0	1	0	2	0	2	0	0	0	1	0	0	0	0	0	0	0	1	0	11	36	0,3056			
77	DEAL	2	2	1	0	0	0	0	0	0	0	0	0	0	0	0	0	0	1	0	2	0	2	0	0	0	1	0	0	0	0	0	0	0	0	0	0	11	36	0,3056		
78	POLA	2	2	0	0	0	0	0	0	1	0	0	0	0	0	0	0	0	1	0	2	0	2	0	1	0	1	0	0	0	0	0	1	0	0	0	13	36	0,3611			
79	DIVA	2	2	0	0	0	0	0	0	0	0	0	0	0	0	0	0	1	0	1	0	2	0	2	0	0	0	1	0	0	0	0	0	0	0	0	0	11	36	0,3056		
80	LUCK	2	2	0	0	0	0	0	0	0	0	0	0	0	0	0	0	0	1	0	2	0	2	0	1	0	1	0	0	0	0	0	1	0	0	0	12	36	0,3333			
81	SOTS	2	2	0	0	0	0	0	0	0	0	0	0	0	0	0	0	1	0	1	0	2	0	2	0	0	0	1	0	0	0	0	0	0	0	1	0	12	36	0,3333		
82	URBN	2	2	0	0	0	0	0	0	1	0	0	0	0	0	0	0	0	1	0	2	0	2	0	0	0	1	0	0	0	0	0	1	0	1	0	13	36	0,3611			
83	ZONE	2	2	0	0	0	0	0	0	0	0	0	0	0	0	0	0	0	1	0	2	0	2	0	0	0	1	0	0	0	0	0	0	0	0	0	10	36	0,2778			
84	BRIS	2	2	0	0	0	1	1	0	1	0	0	0	0	0	0	0	0	1	0	2	0	2	0	0	0	1	0	0	0	0	0	1	0	0	0	14	36	0,3889			

Lampiran 7

HASIL DATA EIEWS 8

1. Hasil Uji Normalitas



2. Hasil Uji Multikolenoeiritas

	Coefficient	Uncentered	Centered
Variable	Variance	VIF	VIF
C	0.014776	330.1783	NA
UKURAN_PERUSAH AAN	0.000103	311.3386	1.003963
TIPE_INDUSTRI	0.000299	3.423150	1.670823
GENDER_DIVERSITY	0.000309	3.207381	1.718240

KOMISARIS_INDEPEN DEN	0.006456	24.11462	1.051021
--------------------------	----------	----------	----------

Lampiran 8

HASIL DATA EVIEWS 8

3. Hasil Uji Autokorelasi

R-squared	0.028342	Mean dependent var	6.73E-17
Adjusted R-squared	-0.047372	S.D. dependent var	0.059815
S.E. of regression	0.061216	Akaike info criterion	-2.669168
Sum squared resid	0.288548	Schwarz criterion	-2.466600
Log likelihood	119.1051	Hannan-Quinn criter.	-2.587737

F-statistic	0.374328	Durbin-Watson stat	1.950202
Prob(F-statistic)	0.893194		

4. Hasil Uji Heterokedastitas

Heteroskedasticity Test: Breusch-Pagan-Godfrey			
F-statistic	2.021757	Prob. F(4,79)	0.0994
Obs*R-squared	7.800361	Prob. Chi-Square(4)	0.0992
Scaled explained SS	8.193776	Prob. Chi-Square(4)	0.0847

5. Hasil Analisis Statistik Deskriptif

	PENGUNGKA PAN_IC	UKURAN_P ERUSAHAA N	TIPE_INDUS TRI	GENDER_ DIVERSIT Y	KOMISA RIS_INDE PENDEN
Mean	0.348545	11.62845	0.511905	0.464286	0.399830
Median	0.333333	11.61223	1.000000	0.000000	0.333333
Maximum	0.527778	13.49891	1.000000	1.000000	0.666667
Minimum	0.222222	9.748982	0.000000	0.000000	0.285714
Std. Dev.	0.062695	0.665374	0.502860	0.501718	0.085865
Observations	84	84	84	84	84

Lampiran 9

HASIL DATA EVIEWS 8

6. Hasil Uji Regresi Linier Berganda, Uji Koefesien Determinasi dan Uji Statistik t

Dependent Variable: PENGUNGKAPAN_IC				
Method: Least Squares				
Date: 02/26/19 Time: 20:38				
Sample: 1 84				
Included observations: 84				
Variable	Coefficient	Std. Error	t-Statistic	Prob.
C	0.100336	0.121555	0.825436	0.4116
UKURAN_PERUSAHA AN	0.019535	0.010134	1.927584	0.0575
TIPE_INDUSTRI	-0.026457	0.017299	-1.529410	0.1302
GENDER_DIVERSITY	0.033135	0.017583	1.884568	0.0632
KOMISARIS_INDEPEN DEN	0.048047	0.080350	0.597966	0.5516
R-squared	0.089743	Mean dependent var	0.348545	
Adjusted R-squared	0.043654	S.D. dependent var	0.062695	
S.E. of regression	0.061311	Akaike info criterion	-2.688036	
Sum squared resid	0.296964	Schwarz criterion	-2.543345	
Log likelihood	117.8975	Hannan-Quinn criter.	-2.629871	
F-statistic	1.947158	Durbin-Watson stat	2.037418	
Prob(F-statistic)	0.110791			

