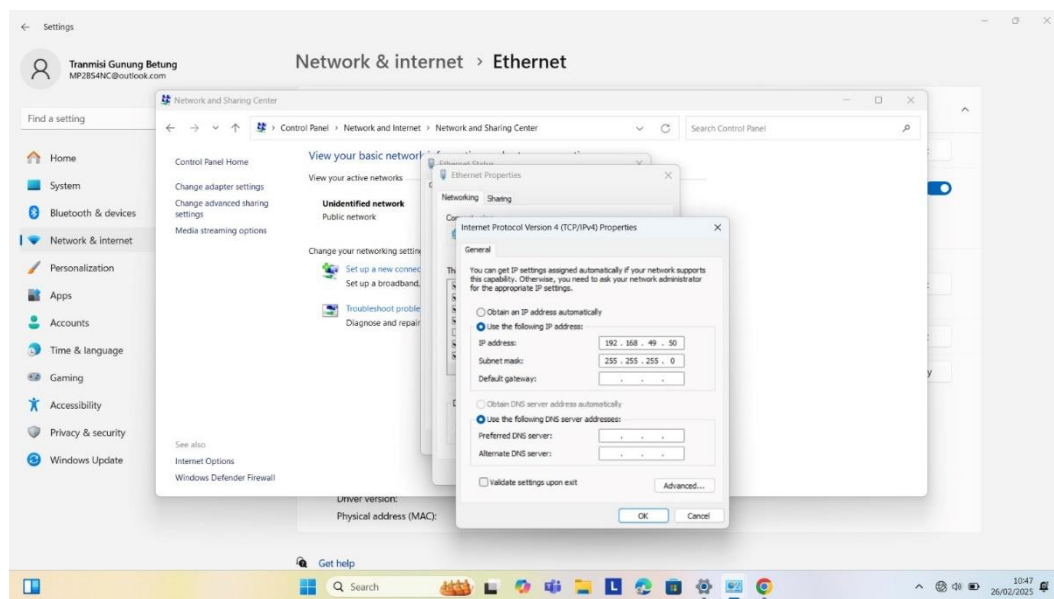
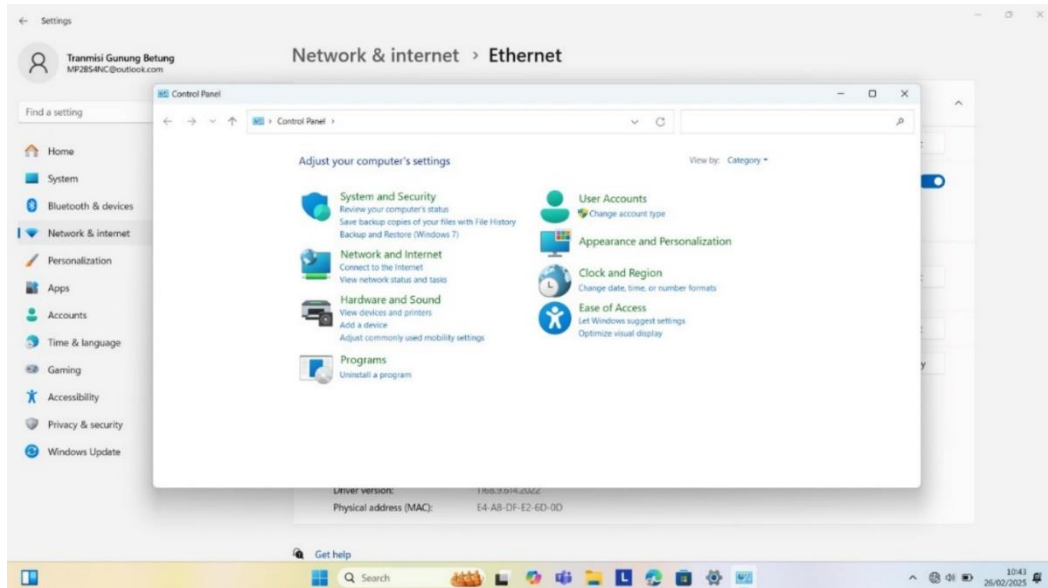


LAMPIRAN



Mengatur Alamat IP Laptop

Input ASI 55:P1 Properties

Enable:

Port Description: NET TV

De-Jittering: [v]

OK Cancel Save

Physical Inputs	Logical Inputs	Physical Outputs
Part #1 (TVRI HD)	TS #5 (TS ID: 0) → ASI Slot #3 Port #5 (RTV)	Part #1 Main Card
Part #2 (TVRI SPD)	TS #6 (TS ID: 0) → ASI Slot #3 Port #6 (RADAR TV)	Part #2 GbE Card
Part #3 (TVRI LAM)	TS #7 (TS ID: 1) → ASI Slot #5 Port #1 (NET TV)	Part #3 ASI
Part #4 (DAWIKA TV)	TS #8 (TS ID: 1) → ASI Slot #5 Port #2 (UNILA TV)	Part #5 ASI
Part #5 (RTV)	TS #9 (TS ID: 0) → ASI Slot #5 Port #3 (SABURAN TV)	
Part #6 (RADAR TV)	TS #10 (TS ID: 0)	
Slot #5 ASI		

Active Alarms																				
<table border="1"> <thead> <tr> <th>Fault Object</th> <th>Description</th> <th>Asserted Time</th> <th>Severity</th> <th>Recovery Tip</th> </tr> </thead> <tbody> <tr> <td>1 Program 9 (UNILA TV) of TS ID 4481</td> <td>Service Failure</td> <td>26-Feb-2025 10:29:17 AM</td> <td>Error</td> <td>Check the input stream, and reboot the device.</td> </tr> <tr> <td>2 ASI Slot #5 Port #2 (UNILA TV)</td> <td>ASI Input Signal Loss</td> <td>26-Feb-2025 10:28:16 AM</td> <td>Warning</td> <td>Connect the cable.</td> </tr> <tr> <td>3 PID 128 (0x80) of Program 1001 (No Name) of TS ID ...</td> <td>PID Missing - In TS ID: 1 S3 P1 PID 128 (0x80) - Out TS ID: 4481 S3 P7 PID 128 (0x80)</td> <td>26-Feb-2025 08:58:24 AM</td> <td>Warning</td> <td>Check the input that contains the PID. Check the bitrate of the PID that supersedes the minimum bitrate (approximately 2 packets per second).</td> </tr> </tbody> </table>	Fault Object	Description	Asserted Time	Severity	Recovery Tip	1 Program 9 (UNILA TV) of TS ID 4481	Service Failure	26-Feb-2025 10:29:17 AM	Error	Check the input stream, and reboot the device.	2 ASI Slot #5 Port #2 (UNILA TV)	ASI Input Signal Loss	26-Feb-2025 10:28:16 AM	Warning	Connect the cable.	3 PID 128 (0x80) of Program 1001 (No Name) of TS ID ...	PID Missing - In TS ID: 1 S3 P1 PID 128 (0x80) - Out TS ID: 4481 S3 P7 PID 128 (0x80)	26-Feb-2025 08:58:24 AM	Warning	Check the input that contains the PID. Check the bitrate of the PID that supersedes the minimum bitrate (approximately 2 packets per second).
Fault Object	Description	Asserted Time	Severity	Recovery Tip																
1 Program 9 (UNILA TV) of TS ID 4481	Service Failure	26-Feb-2025 10:29:17 AM	Error	Check the input stream, and reboot the device.																
2 ASI Slot #5 Port #2 (UNILA TV)	ASI Input Signal Loss	26-Feb-2025 10:28:16 AM	Warning	Connect the cable.																
3 PID 128 (0x80) of Program 1001 (No Name) of TS ID ...	PID Missing - In TS ID: 1 S3 P1 PID 128 (0x80) - Out TS ID: 4481 S3 P7 PID 128 (0x80)	26-Feb-2025 08:58:24 AM	Warning	Check the input that contains the PID. Check the bitrate of the PID that supersedes the minimum bitrate (approximately 2 packets per second).																

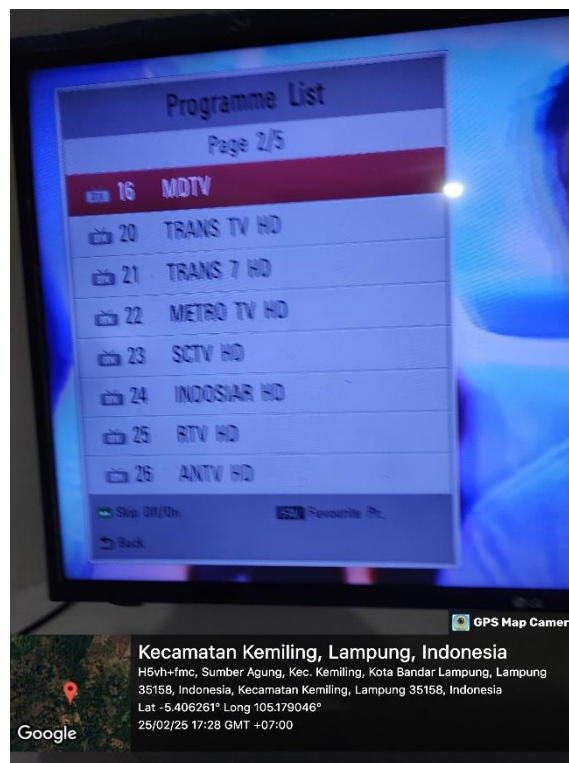
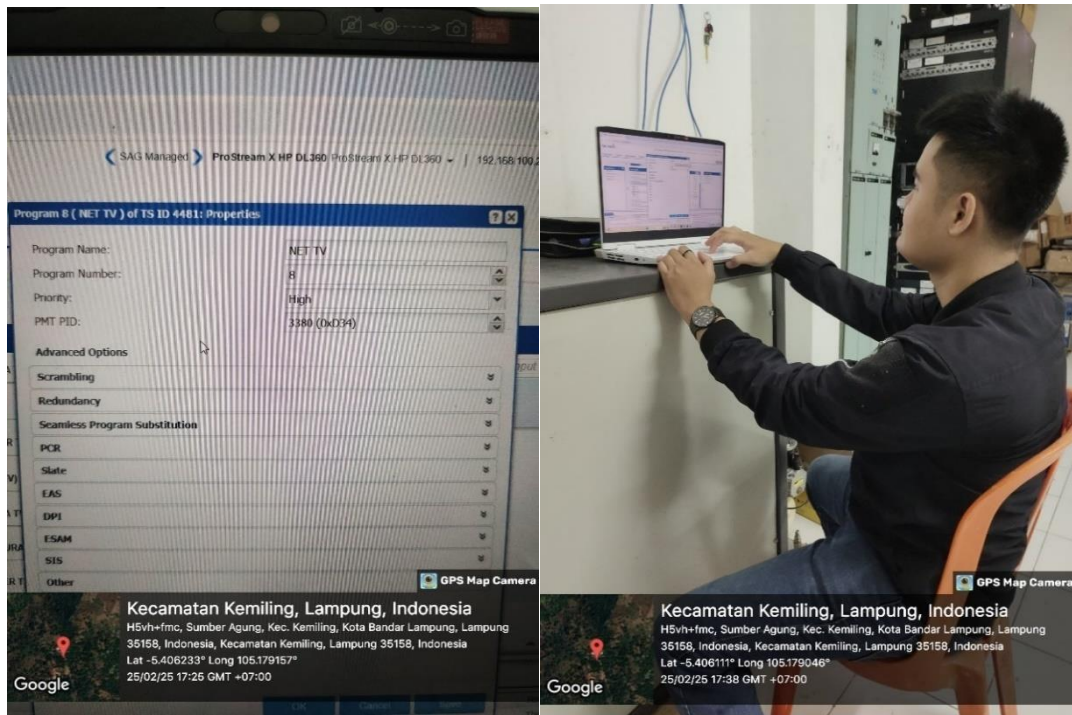
Logical Outputs

Services (11)

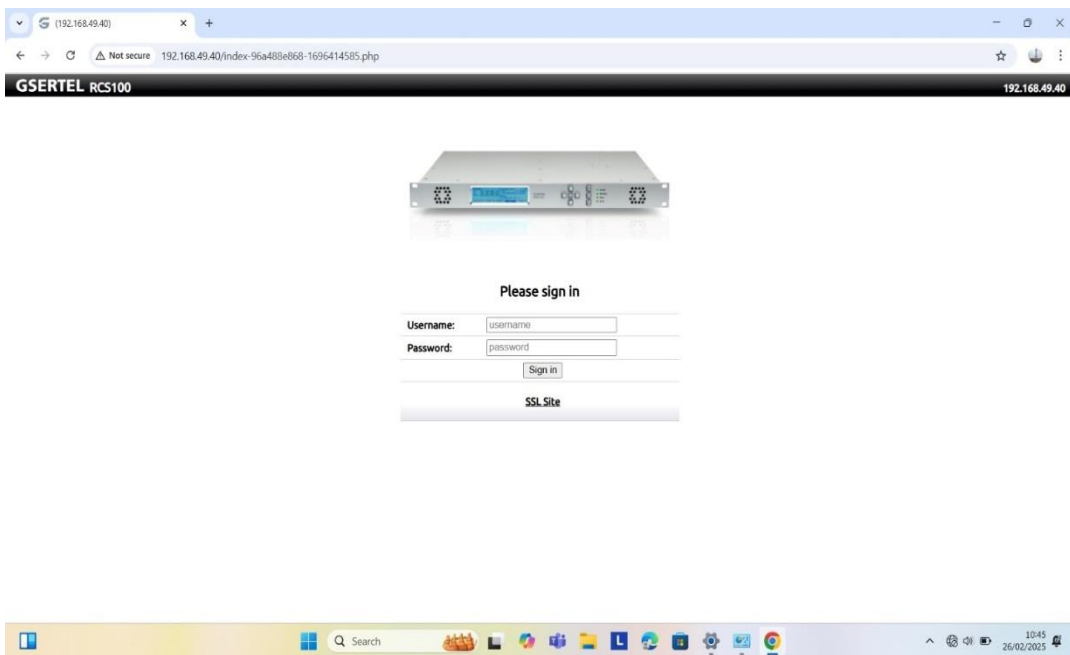
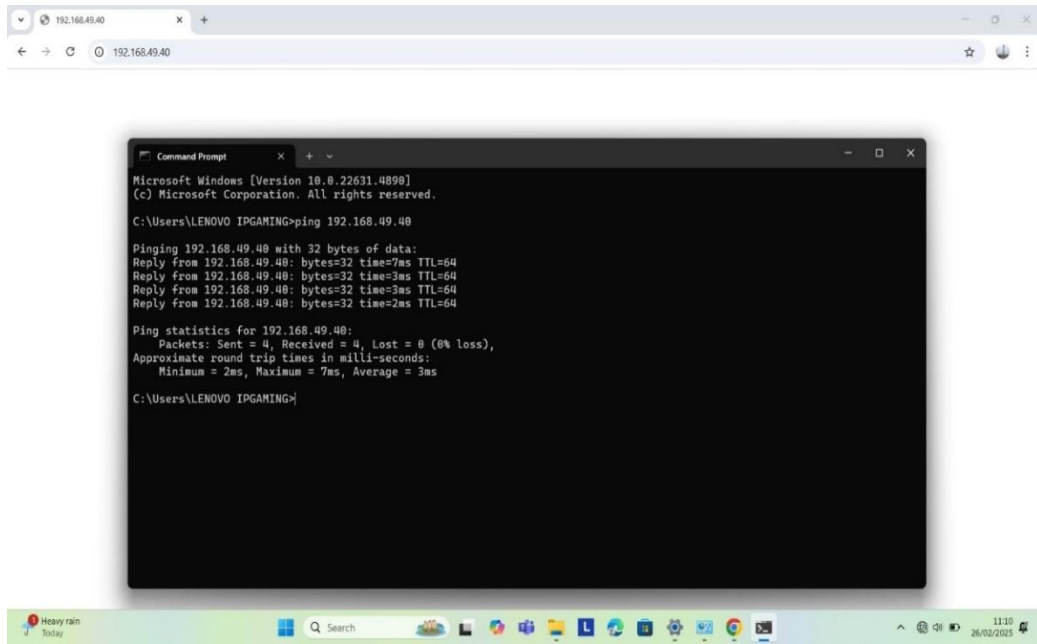
- Program 1 TVRI NASIONAL: 3,618 Mbps
- Program 2 TVRI Lampung: 4,229 Mbps
- Program 3 TVRI WORLD: 3,736 Mbps
- Program 4 TVRI Sport: 3,736 Mbps
- Program 5 DAWIKA TV: 1,965 Mbps
- Program 7 RADAR TV: 1,961 Mbps
- Program 8 NET TV: 1,826 Mbps
- Program 9 UNILA TV: 0,000 Mbps
- Program 10 SABURAN TV: 1,922 Mbps
- Program 26 RTV HD: 3,946 Mbps
- Program 1001 No Name: 0,000 Mbps

Active Alarms																				
<table border="1"> <thead> <tr> <th>Fault Object</th> <th>Description</th> <th>Asserted Time</th> <th>Severity</th> <th>Recovery Tip</th> </tr> </thead> <tbody> <tr> <td>1 Program 9 (UNILA TV) of TS ID 4481</td> <td>Service Failure</td> <td>01-Feb-2025 07:38:24 PM</td> <td>Error</td> <td>Check the input stream, and reboot the device.</td> </tr> <tr> <td>2 ASI Slot #5 Port #2 (UNILA TV)</td> <td>ASI Input Signal Loss</td> <td>01-Feb-2025 07:38:22 PM</td> <td>Warning</td> <td>Connect the cable.</td> </tr> <tr> <td>3 PID 128 (0x80) of Program 1001 (No Name) of TS ID ...</td> <td>PID Missing - In TS ID: 1 S3 P1 PID 128 (0x80) - Out TS ID: 4481 S3 P7 PID 128 (0x80)</td> <td>01-Feb-2025 07:42:03 AM</td> <td>Warning</td> <td>Check the input that contains the PID. Check the bitrate of the PID that supersedes the minimum bitrate (approximately 2 packets per second).</td> </tr> </tbody> </table>	Fault Object	Description	Asserted Time	Severity	Recovery Tip	1 Program 9 (UNILA TV) of TS ID 4481	Service Failure	01-Feb-2025 07:38:24 PM	Error	Check the input stream, and reboot the device.	2 ASI Slot #5 Port #2 (UNILA TV)	ASI Input Signal Loss	01-Feb-2025 07:38:22 PM	Warning	Connect the cable.	3 PID 128 (0x80) of Program 1001 (No Name) of TS ID ...	PID Missing - In TS ID: 1 S3 P1 PID 128 (0x80) - Out TS ID: 4481 S3 P7 PID 128 (0x80)	01-Feb-2025 07:42:03 AM	Warning	Check the input that contains the PID. Check the bitrate of the PID that supersedes the minimum bitrate (approximately 2 packets per second).
Fault Object	Description	Asserted Time	Severity	Recovery Tip																
1 Program 9 (UNILA TV) of TS ID 4481	Service Failure	01-Feb-2025 07:38:24 PM	Error	Check the input stream, and reboot the device.																
2 ASI Slot #5 Port #2 (UNILA TV)	ASI Input Signal Loss	01-Feb-2025 07:38:22 PM	Warning	Connect the cable.																
3 PID 128 (0x80) of Program 1001 (No Name) of TS ID ...	PID Missing - In TS ID: 1 S3 P1 PID 128 (0x80) - Out TS ID: 4481 S3 P7 PID 128 (0x80)	01-Feb-2025 07:42:03 AM	Warning	Check the input that contains the PID. Check the bitrate of the PID that supersedes the minimum bitrate (approximately 2 packets per second).																

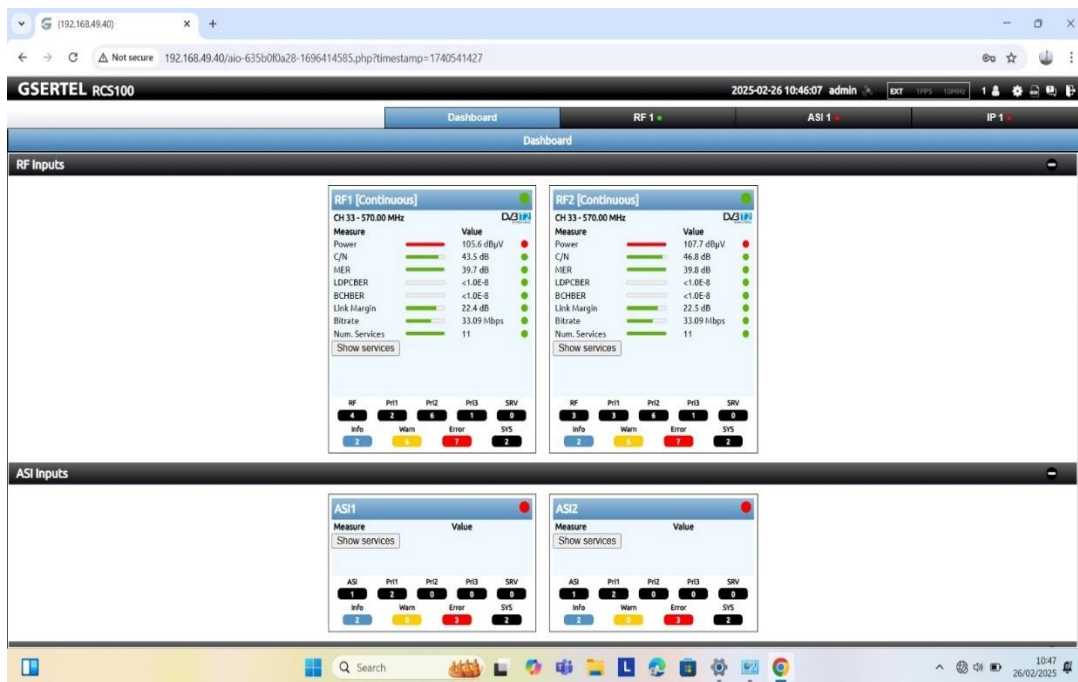
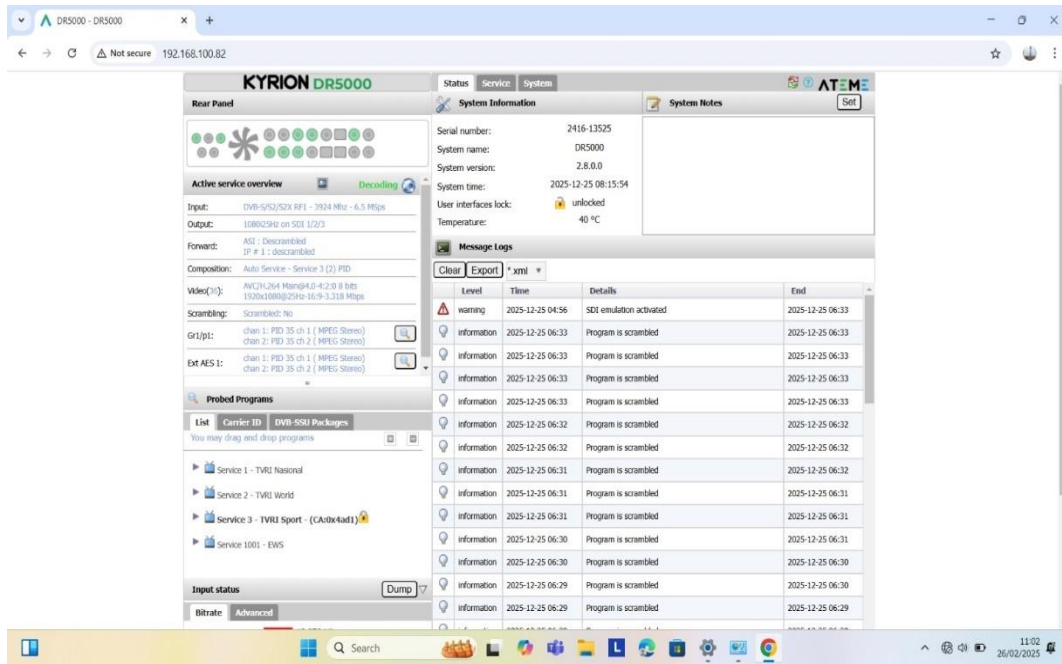
Tampilan Halaman Perangkat MUX



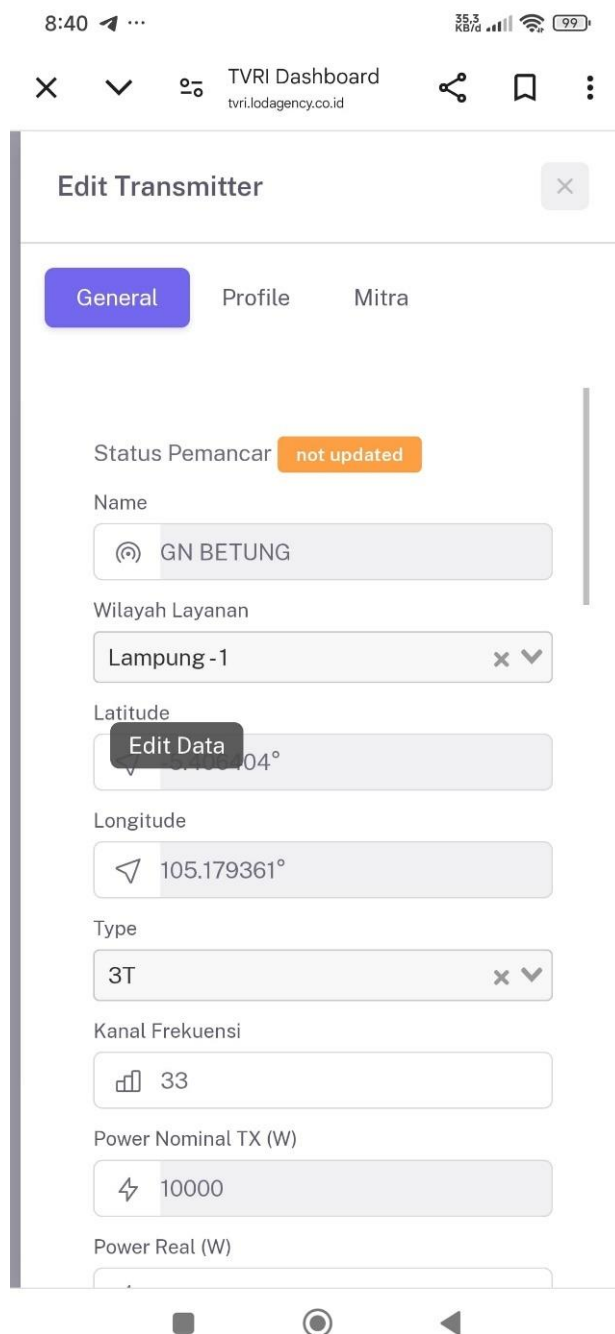
Mengubah Data Pada Perangkat



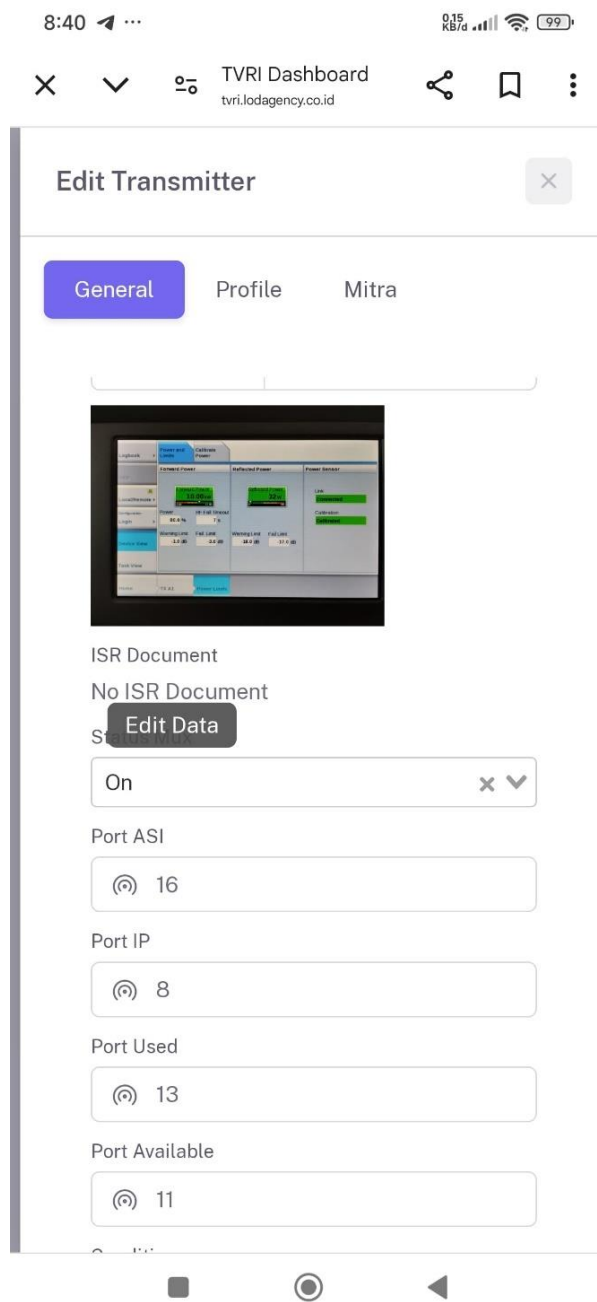
Login ke Halaman Perangkat RCS



Tampilan Halaman Perangkat RCS



Halaman Pada Penginputan Matering Online



Penginputan Matering Online

16:25 ■ ... 0.63 KB/d ... 61

TVRI Dashboard
tvri.lodagency.co.id

Edit Transmitter

General Profile Mitra

Tegangan Output TR (V)
⚡ 220

Tegangan Output RN (V)
⚡ 381

Tegangan Output SN (V)
⚡ 380

Tegangan Output TN (V)
⚡ 380

Panel Antena
📶 24

Tinggi Tower
📶 100

Downtime
🕒 YYYY-MM-DD HH:MM

Last updated on 2025-02-14 14:17:22 by MAHAKBAR

Submit Cancel

Tampilan Sesudah Penginputan Matering Online

MISI GUNUNG BETUNG					
DAILY METERING					
DATE: 01 Feb - 2025 / Sabtu					
TIME	UNIT	06:00	13:00	19:00	
TYPE					
		RS	RS	RS	
		A	A	A	
KW		10.00	10.00	10.00	
WATT		11200.00	11200.00	11200.00	
%		57	57	57	
POWER	WATT	57	57	57	
LED AMPLIFIERS					
STATUS AMPLIFIERS	1	A	10.16 10.20 10.25	10.16 10.20 10.25	10.16 10.20 10.25
		B	10.16 10.20 10.25	10.16 10.20 10.25	10.16 10.20 10.25
	2	A	10.16 10.20 10.25	10.16 10.20 10.25	10.16 10.20 10.25
		B	10.16 10.20 10.25	10.16 10.20 10.25	10.16 10.20 10.25
	3	A	10.16 10.20 10.25	10.16 10.20 10.25	10.16 10.20 10.25
		B	10.16 10.20 10.25	10.16 10.20 10.25	10.16 10.20 10.25
	4	A	10.16 10.20 10.25	10.16 10.20 10.25	10.16 10.20 10.25
		B	10.16 10.20 10.25	10.16 10.20 10.25	10.16 10.20 10.25
	5	A	10.16 10.20 10.25	10.16 10.20 10.25	10.16 10.20 10.25
		B	10.16 10.20 10.25	10.16 10.20 10.25	10.16 10.20 10.25
	6	A	10.16 10.20 10.25	10.16 10.20 10.25	10.16 10.20 10.25
		B	10.16 10.20 10.25	10.16 10.20 10.25	10.16 10.20 10.25
	7	A	10.16 10.20 10.25	10.16 10.20 10.25	10.16 10.20 10.25
		B	10.16 10.20 10.25	10.16 10.20 10.25	10.16 10.20 10.25
	8	A	10.16 10.20 10.25	10.16 10.20 10.25	10.16 10.20 10.25
		B	10.16 10.20 10.25	10.16 10.20 10.25	10.16 10.20 10.25
	COOLING SYSTEM				
	LET TEMPERATURE	°C	31	31	31
	TLET TEMPERATURE	°C	34	34	34
	LUID PRESSURE	BAR	2.1	2.1	2.1
	VP OPERATION	(1/2)	1	2	1
	LUID FLOW	L/MN	1	2	1
	WANGER FAN OPERATION	(1/2)	1	2	1
	WANGER FAN SPEED	%	99	99	99
TVRD					
ATE	MBPS	12.874	12.874	12.874	
	DBM	-45	-45	-45	
(OR C/N)	DB	205	214	214	
		10E-00	10E-09	10E-08	

MISI GUNUNG BETUNG					
DAILY METERING					
DATE: 01 Feb - 2025 / Sabtu					
TIME	UNIT	06:00	13:00	19:00	
TYPE					
		RS	RS	RS	
		A	A	A	
KW		10.00	10.00	10.00	
WATT		11200.00	11200.00	11200.00	
%		57	57	57	
POWER	WATT	57	57	57	
LED AMPLIFIERS					
STATUS AMPLIFIERS	1	A	10.16 10.20 10.25	10.16 10.20 10.25	10.16 10.20 10.25
		B	10.16 10.20 10.25	10.16 10.20 10.25	10.16 10.20 10.25
	2	A	10.16 10.20 10.25	10.16 10.20 10.25	10.16 10.20 10.25
		B	10.16 10.20 10.25	10.16 10.20 10.25	10.16 10.20 10.25
	3	A	10.16 10.20 10.25	10.16 10.20 10.25	10.16 10.20 10.25
		B	10.16 10.20 10.25	10.16 10.20 10.25	10.16 10.20 10.25
	4	A	10.16 10.20 10.25	10.16 10.20 10.25	10.16 10.20 10.25
		B	10.16 10.20 10.25	10.16 10.20 10.25	10.16 10.20 10.25
	5	A	10.16 10.20 10.25	10.16 10.20 10.25	10.16 10.20 10.25
		B	10.16 10.20 10.25	10.16 10.20 10.25	10.16 10.20 10.25
	6	A	10.16 10.20 10.25	10.16 10.20 10.25	10.16 10.20 10.25
		B	10.16 10.20 10.25	10.16 10.20 10.25	10.16 10.20 10.25
	7	A	10.16 10.20 10.25	10.16 10.20 10.25	10.16 10.20 10.25
		B	10.16 10.20 10.25	10.16 10.20 10.25	10.16 10.20 10.25
	8	A	10.16 10.20 10.25	10.16 10.20 10.25	10.16 10.20 10.25
		B	10.16 10.20 10.25	10.16 10.20 10.25	10.16 10.20 10.25
	COOLING SYSTEM				
	LET TEMPERATURE	°C	31	31	31
	TLET TEMPERATURE	°C	34	34	34
	LUID PRESSURE	BAR	2.1	2.1	2.1
	VP OPERATION	(1/2)	1	2	1
	LUID FLOW	L/MN	1	2	1
	WANGER FAN OPERATION	(1/2)	1	2	1
	WANGER FAN SPEED	%	99	99	99
TVRD					
ATE	MBPS	12.874	12.874	12.874	
	DBM	-45	-45	-45	
(OR C/N)	DB	205	214	214	
		10E-00	10E-09	10E-08	
PARAF PETUGAS					
(NAMA)		Bahman	HENDRIANTO	Alim	

Lembaran Matering Manual



Power TX



**Foto Bersama Koordinator dan Para Operator Transmisi TVRI Gunung
Betung Lampung**