

## LAMPIRAN-LAMPIRAN

### 1. Hasil codingan XML dari proses labeling CT-Scan citra dada/paru-paru

```
<annotation>
  <folder>case 1</folder>
  <filename>case 1.0.jpeg</filename>
  <path>D:\DATASET COVID-19\case 1\case 1.0.jpeg</path>
  <source>
    <database>Unknown</database>
  </source>
  <size>
    <width>1024</width>
    <height>907</height>
    <depth>1</depth>
  </size>
  <segmented>0</segmented>
  <object>
    <name>chestCTScan1.0</name>
    <pose>Unspecified</pose>
    <truncated>0</truncated>
    <difficult>0</difficult>
    <bndbox>
      <xmin>24</xmin>
      <ymin>33</ymin>
      <xmax>1002</xmax>
      <ymax>875</ymax>
    </bndbox>
  </object>
</annotation>
```

```
<annotation>
  <folder>case 2</folder>
  <filename>case2.1.jpeg</filename>
  <path>D:\DATASET COVID-19\case 2\case2.1.jpeg</path>
  <source>
    <database>Unknown</database>
  </source>
  <size>
    <width>1024</width>
    <height>1019</height>
    <depth>1</depth>
  </size>
  <segmented>0</segmented>
  <object>
    <name>ChestCTScan2.1</name>
    <pose>Unspecified</pose>
    <truncated>0</truncated>
    <difficult>0</difficult>
    <bndbox>
      <xmin>5</xmin>
      <ymin>6</ymin>
      <xmax>1016</xmax>
      <ymax>1011</ymax>
    </bndbox>
  </object>
</annotation>
```

```
<annotation>
  <folder>case 3</folder>
  <filename>case 3.0.jpeg</filename>
  <path>D:\DATASET COVID-19\case 3\case 3.0.jpeg</path>
  <source>
    <database>Unknown</database>
  </source>
```

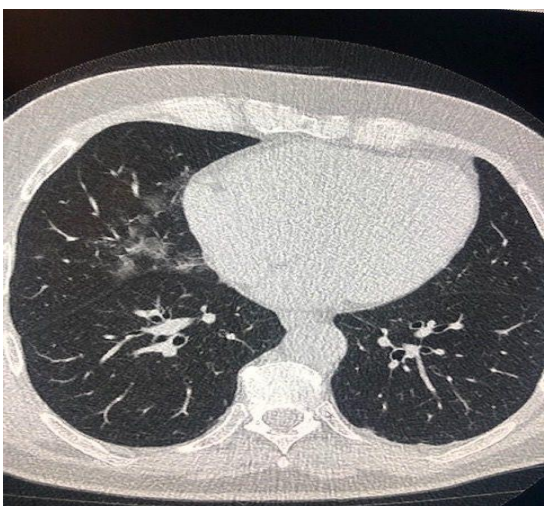
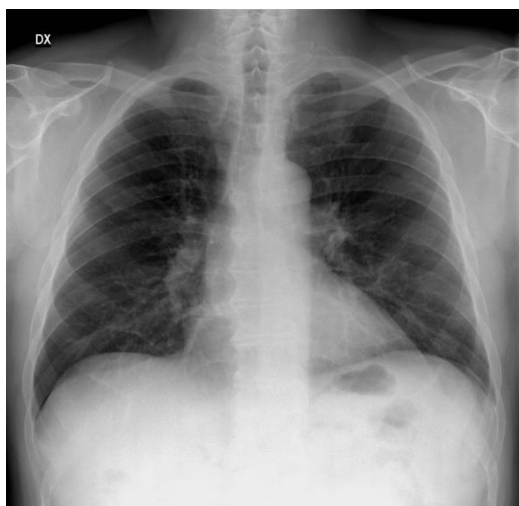
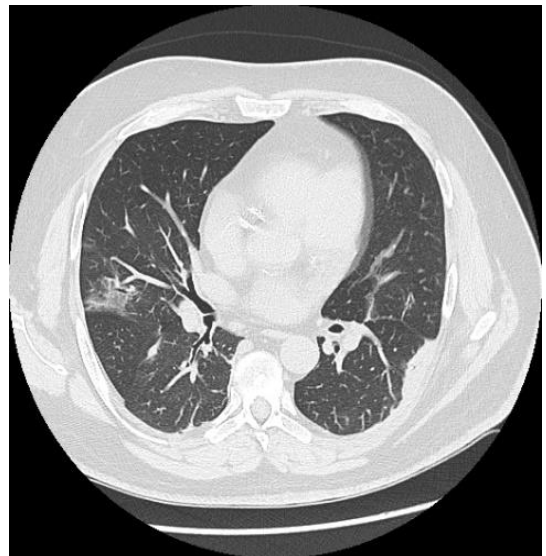
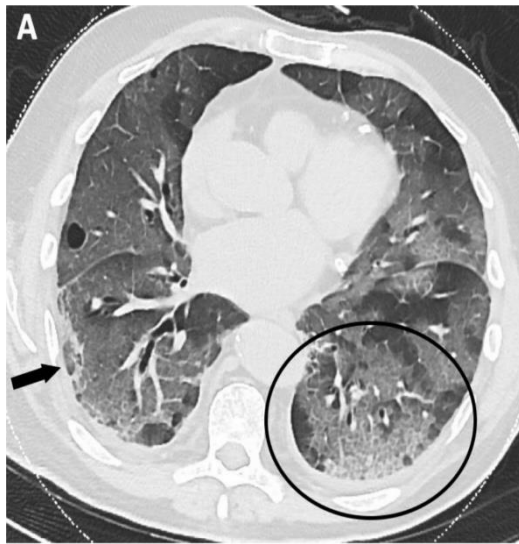
```
<size>
  <width>978</width>
  <height>1024</height>
  <depth>3</depth>
</size>
<segmented>0</segmented>
<object>
  <name>ChestCTScan3.0</name>
  <pose>Unspecified</pose>
  <truncated>0</truncated>
  <difficult>0</difficult>
  <bndbox>
    <xmin>13</xmin>
    <ymin>22</ymin>
    <xmax>974</xmax>
    <ymax>1016</ymax>
  </bndbox>
</object>
</annotation>
```

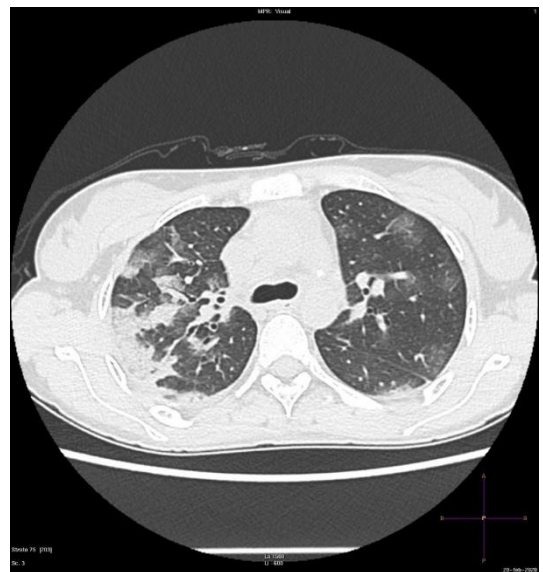
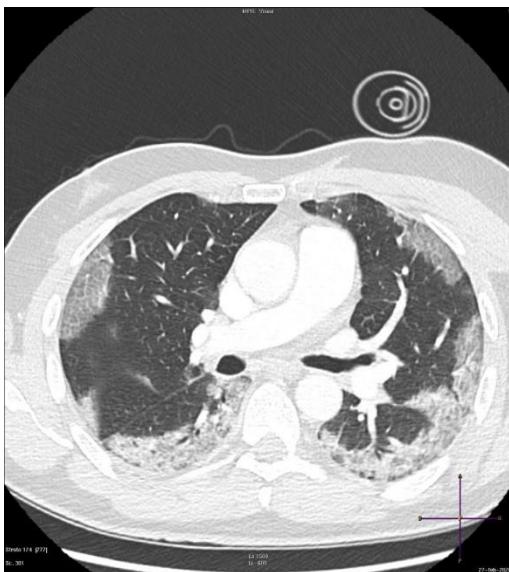
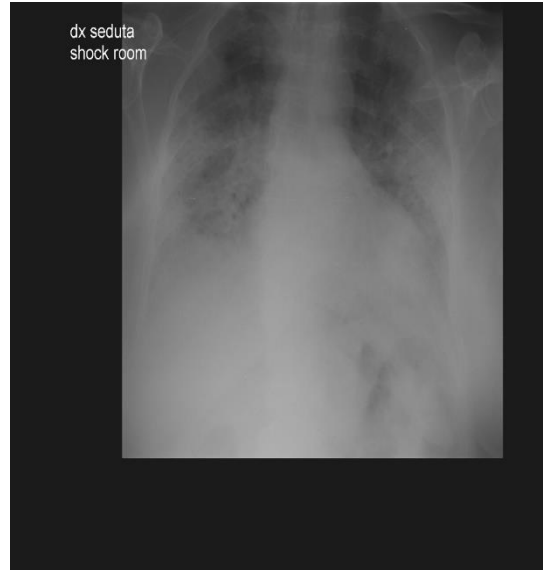
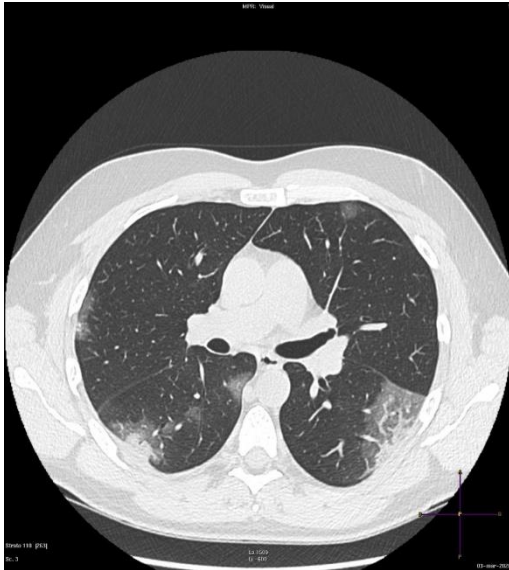
```
<annotation>
  <folder>case 4</folder>
  <filename>case 4.0.jpeg</filename>
  <path>D:\DATASET COVID-19\case 4\case 4.0.jpeg</path>
  <source>
    <database>Unknown</database>
  </source>
  <size>
    <width>978</width>
    <height>1024</height>
    <depth>3</depth>
  </size>
  <segmented>0</segmented>
  <object>
    <name>ChestCTScan4.0</name>
    <pose>Unspecified</pose>
```

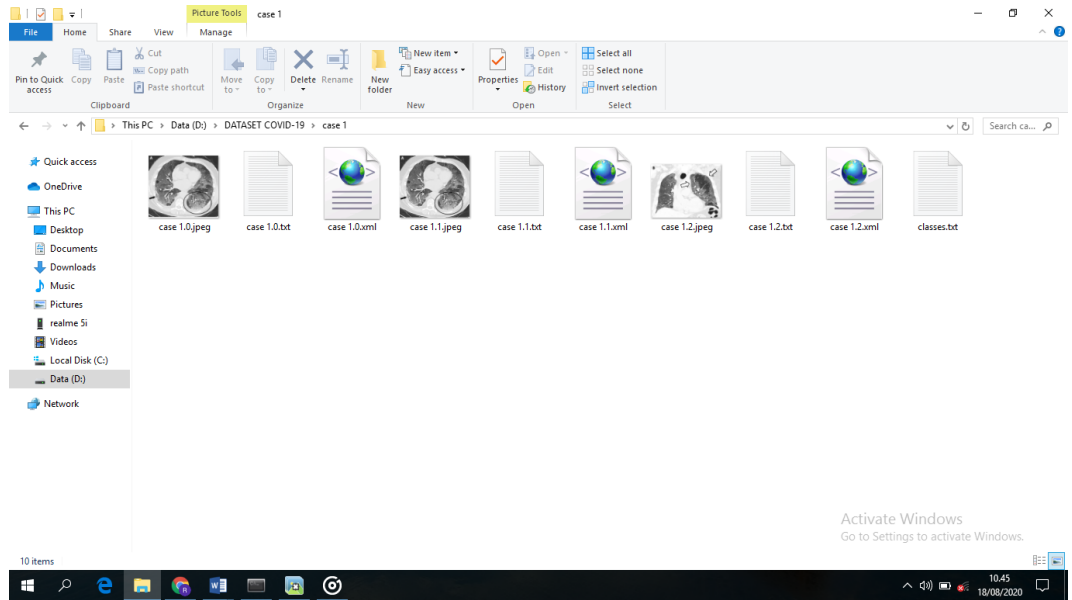
```
<truncated>0</truncated>
<difficult>0</difficult>
<bndbox>
  <xmin>143</xmin>
  <ymin>249</ymin>
  <xmax>849</xmax>
  <ymin>750</ymin>
</bndbox>
</object>
</annotation>
```

```
<annotation>
  <folder>case 5</folder>
  <filename>case 5.0.jpeg</filename>
  <path>D:\DATASET COVID-19\covid case 01-
case 68\case 5\case 5.0.jpeg</path>
  <source>
    <database>Unknown</database>
  </source>
  <size>
    <width>512</width>
    <height>512</height>
    <depth>1</depth>
  </size>
  <segmented>0</segmented>
  <object>
    <name>ChestCTScan 5</name>
    <pose>Unspecified</pose>
    <truncated>0</truncated>
    <difficult>0</difficult>
    <bndbox>
      <xmin>56</xmin>
      <ymin>104</ymin>
      <xmax>442</xmax>
      <ymin>426</ymin>
    </bndbox>
  </object>
</annotation>
```

Gambar 4. Mengumpulkan d CT-Scan citra dada/paru-paru







Gambar 5. Hasil output CT-Scan citra dada / paru-paru dengan algoritma Labeling