

LAMPIRAN

Lampiran 1 : Data Perusahaan Yang Dijadikan Sampel Penelitian

No	Keterangan	Kode
1	Bank Rakyat Indonesia Agroniaga Tbk	AGRO
2	Bank Agris Tbk	AGRS
3	Bank MNC Internasional Tbk	BABP
4	Bank Capital Indonesia	BACA
5	Bank Central Asia Tbk	BBCA
6	Bank Bukopin Tbk	BBKP
7	Bank Nusantara Parahyangan Tbk	BBNP
8	Bank Danamon Indonesia Tbk	BDMN
9	Bank QNB Indonesia Tbk	BKSW
10	Bank Maspion indonesia	BMAS
11	Bank CIMB Niaga Tbk	BNGA
12	Bank Maybank Indonesia Tbk	BNII
13	Bank Permata Tbk	BNLI
14	Bank Sinarmas Tbk	BSIM
15	Bank of India Indonesia Tbk	BSWD
16	Bank Artha Graha Internasional Tbk	INPC
17	Bank Mayapada Internasional Tbk	MAYA
18	Bank Mega Tbk	MEGA
19	Bank OCBC NISP Tbk	NISP
20	Bank Pan Indonesia Tbk	PNBN
21	Bank Woori saudara Indonesia 1906 Tbk	SDRA

Lampiran 2 : Perhitungan Rasio CAR

No	Keterangan	Kode	2013	2014	2015	2016	2017	RATA2	Peringkat Komposit
1	Bank Rakyat Indonesia Agroniaga Tbk	AGRO	21,60%	19,06%	22,12%	23,68%	29,58%	23,21%	1
2	Bank Agris Tbk	AGRS	18,68%	18,41%	18,23%	17,17%	18,64%	18,23%	1
3	Bank MNC Internasional Tbk	BABP	13,09%	17,79%	17,83%	19,54%	12,58%	16,17%	1
4	Bank Capital Indonesia	BACA	20,13%	16,43%	17,70%	20,64%	22,56%	19,49%	1
5	Bank Central Asia Tbk	BBCA	15,70%	16,90%	18,70%	21,90%	23,10%	19,26%	1
6	Bank Bukopin Tbk	BBKP	15,10%	14,20%	13,56%	11,62%	10,52%	13,00%	1
7	Bank Nusantara Parahyangan Tbk	BBNP	15,75%	16,55%	18,07%	20,57%	17,50%	17,69%	1
8	Bank Danamon Indonesia Tbk	BDMN	17,90%	17,90%	19,70%	20,90%	22,10%	19,70%	1
9	Bank QNB Indonesia Tbk	BKSW	18,74%	15,10%	16,18%	16,46%	20,30%	17,36%	1
10	Bank Maspion indonesia	BMAS	21,01%	19,45%	19,33%	24,32%	21,59%	21,14%	1
11	Bank CIMB Niaga Tbk	BNGA	15,36%	15,58%	16,28%	17,96%	18,60%	16,76%	1
12	Bank Maybank Indonesia Tbk	BNII	12,74%	15,76%	15,17%	16,77%	17,53%	15,59%	1
13	Bank Permata Tbk	BNLI	14,30%	13,60%	15,00%	15,60%	18,10%	15,32%	1
14	Bank Sinarmas Tbk	BSIM	21,82%	18,38%	14,37%	16,70%	18,31%	17,92%	1
15	Bank of India Indonesia Tbk	BSWD	15,26%	15,39%	23,85%	34,50%	37,17%	25,23%	1
16	Bank Artha Graha Internasional Tbk	INPC	17,31%	15,95%	15,20%	19,92%	17,44%	17,16%	1
17	Bank Mayapada Internasional Tbk	MAYA	14,07%	10,44%	12,97%	13,34%	14,11%	12,99%	1
18	Bank Mega Tbk	MEGA	15,74%	15,23%	22,85%	26,21%	24,11%	20,83%	1
19	Bank OCBC NISP Tbk	NISP	19,28%	18,74%	17,32%	18,28%	17,51%	18,23%	1
20	Bank Pan Indonesia Tbk	PNBN	16,74%	17,30%	20,13%	20,49%	21,99%	19,33%	1
21	Bank Woori saudara Indonesia 1906	SDRA	27,91%	21,71%	18,82%	17,20%	24,86%	22,10%	1

Lampiran 3 : Perhitungan Rasio ROA

No	Keterangan	Kode Bank	2013	2014	2015	2016	2017	RATA2	Peringkat Komposit
1	Bank Rakyat Indonesia Agroniaga Tbk	AGRO	1,66%	1,47%	1,55%	1,49%	1,45%	1,52%	2
2	Bank Agris Tbk	AGRS	0,77%	0,26%	0,17%	0,15%	-0,20%	0,23%	4
3	Bank MNC Internasional Tbk	BABP	-0,93%	-0,82%	0,10%	0,11%	-7,47%	-1,80%	5
4	Bank Capital Indonesia	BACA	1,59%	1,33%	1,10%	1,00%	0,79%	1,16%	3
5	Bank Central Asia Tbk	BBCA	3,80%	3,90%	3,80%	4,00%	3,90%	3,88%	1
6	Bank Bukopin Tbk	BBKP	1,78%	1,23%	1,39%	0,54%	0,09%	1,01%	3
7	Bank Nusantara Parahyangan Tbk	BBNP	1,58%	1,32%	0,99%	0,15%	-0,90%	0,63%	3
8	Bank Danamon Indonesia Tbk	BDMN	2,50%	1,40%	1,70%	2,50%	3,10%	2,24%	1
9	Bank QNB Indonesia Tbk	BKSW	0,09%	1,05%	0,87%	-3,34%	-3,72%	-1,01%	5
10	Bank Maspion indonesia	BMAS	1,12%	0,82%	1,10%	1,67%	1,60%	1,26%	2
11	Bank CIMB Niaga Tbk	BNGA	2,76%	1,33%	0,47%	1,09%	1,70%	1,47%	2
12	Bank Maybank Indonesia Tbk	BNII	1,74%	0,68%	1,01%	1,60%	1,48%	1,30%	2
13	Bank Permata Tbk	BNLI	1,60%	1,20%	0,20%	-4,90%	0,60%	-0,26%	5
14	Bank Sinarmas Tbk	BSIM	1,71%	1,02%	0,95%	1,72%	1,26%	1,33%	2
15	Bank of India Indonesia Tbk	BSWD	3,80%	3,36%	-0,77%	-11,15%	-3,39%	-1,63%	5
16	Bank Artha Graha Internasional Tbk	INPC	1,39%	0,79%	0,33%	0,35%	0,31%	0,63%	3
17	Bank Mayapada Internasional Tbk	MAYA	2,53%	1,98%	2,10%	2,03%	1,30%	1,99%	2
18	Bank Mega Tbk	MEGA	1,14%	1,16%	1,97%	2,36%	2,24%	1,77%	2
19	Bank OCBC NISP Tbk	NISP	1,81%	1,79%	1,68%	1,85%	1,96%	1,82%	2
20	Bank Pan Indonesia Tbk	PNBN	1,85%	2,23%	1,31%	1,69%	1,61%	1,74%	2
21	Bank Woori saudara Indonesia 1906 Tbk	SDRA	5,14%	2,81%	1,94%	1,93%	2,37%	2,84%	1

Lampiran 4 : Perhitungan Rasio LDR

No	Keterangan	Kode	2013	2014	2015	2016	2017	RATA2	Peringkat Komposit
1	Bank Rakyat Indonesia Agroniaga Tbk	AGRO	87,11%	88,49%	87,15%	88,25%	88,33%	87,87%	3
2	Bank Agris Tbk	AGRS	85,47%	70,02%	78,84%	84,54%	84,46%	80,67%	2
3	Bank MNC Internasional Tbk	BABP	80,14%	80,35%	72,29%	77,20%	78,78%	77,75%	2
4	Bank Capital Indonesia	BACA	63,35%	58,13%	55,78%	55,34%	50,61%	56,64%	1
5	Bank Central Asia Tbk	BBCA	78,90%	75,10%	76,10%	77,00%	76,30%	76,68%	2
6	Bank Bukopin Tbk	BBKP	85,80%	83,89%	86,34%	83,61%	81,34%	84,20%	2
7	Bank Nusantara Parahyangan Tbk	BBNP	84,44%	85,19%	90,17%	84,18%	93,99%	87,59%	3
8	Bank Danamon Indonesia Tbk	BDMN	95,10%	92,60%	87,50%	91,00%	93,30%	91,90%	3
9	Bank QNB Indonesia Tbk	BKSW	113,30%	93,47%	112,54%	94,54%	70,37%	96,84%	3
10	Bank Maspion indonesia	BMAS	85,73%	77,20%	92,96%	99,88%	97,14%	90,58%	3
11	Bank CIMB Niaga Tbk	BNGA	94,49%	99,46%	97,98%	98,38%	96,24%	97,31%	3
12	Bank Maybank Indonesia Tbk	BNII	87,04%	92,67%	86,14%	88,92%	88,12%	88,58%	3
13	Bank Permata Tbk	BNLI	89,20%	89,10%	87,80%	80,50%	87,50%	86,82%	3
14	Bank Sinarmas Tbk	BSIM	78,72%	83,88%	78,04%	77,47%	80,57%	79,74%	2
15	Bank of India Indonesia Tbk	BSWD	93,76%	88,06%	82,06%	82,70%	67,78%	82,87%	2
16	Bank Artha Graha Internasional Tbk	INPC	88,87%	87,62%	80,75%	86,39%	82,89%	85,30%	3
17	Bank Mayapada Internasional Tbk	MAYA	85,61%	81,25%	82,99%	91,40%	90,08%	86,27%	3
18	Bank Mega Tbk	MEGA	57,41%	65,85%	65,05%	55,35%	56,47%	60,03%	1
19	Bank OCBC NISP Tbk	NISP	92,49%	93,59%	98,05%	89,86%	93,42%	93,48%	3
20	Bank Pan Indonesia Tbk	PNBN	87,71%	95,47%	98,83%	94,37%	96,39%	94,55%	3
21	Bank Woori saudara Indonesia 1906 Tbk	SDRA	140,72%	101,20%	97,22%	110,45%	111,07%	112,13%	4

Lampiran 5: Perhitungan Rasio NPM

No	Keterangan	Kode	2013	2014	2015	2016	2017	RATA2	Peringkat Komposit
1	Bank Rakyat Indonesia Agroniaga Tbk	AGRO	79%	77%	84%	80%	80%	80%	3
2	Bank Agris Tbk	AGRS	88%	66%	61%	54%	114%	76%	3
3	Bank MNC Internasional Tbk	BABP	123%	77%	75%	18%	75%	73%	3
4	Bank Capital Indonesia	BACA	75%	74%	74%	70%	70%	73%	3
5	Bank Central Asia Tbk	BBCA	83%	80%	80%	80%	80%	81%	2
6	Bank Bukopin Tbk	BBKP	80%	77%	82%	37%	112%	78%	3
7	Bank Nusantara Parahyangan Tbk	BBNP	77%	74%	77%	49%	90%	73%	3
8	Bank Danamon Indonesia Tbk	BDMN	75%	75%	75%	64%	71%	72%	3
9	Bank QNB Indonesia Tbk	BKSW	66%	76%	76%	75%	83%	75%	3
10	Bank Maspion indonesia	BMAS	76%	76%	72%	74%	76%	75%	3
11	Bank CIMB Niaga Tbk	BNGA	73%	79%	62%	76%	73%	72%	3
12	Bank Maybank Indonesia Tbk	BNII	72%	74%	78%	76%	74%	75%	3
13	Bank Permata Tbk	BNLI	86%	78%	84%	75%	79%	80%	3
14	Bank Sinarmas Tbk	BSIM	77%	77%	77%	75%	78%	77%	3
15	Bank of India Indonesia Tbk	BSWD	74%	75%	94%	88%	86%	83%	2
16	Bank Artha Graha Internasional Tbk	INPC	74%	58%	77%	72%	66%	69%	3
17	Bank Mayapada Internasional Tbk	MAYA	76%	76%	74%	79%	75%	76%	3
18	Bank Mega Tbk	MEGA	83%	86%	85%	75%	79%	82%	2
19	Bank OCBC NISP Tbk	NISP	74%	75%	75%	76%	76%	75%	3
20	Bank Pan Indonesia Tbk	PNBN	77%	73%	65%	79%	69%	72%	3
21	Bank Woori saudara Indonesia 1906 Tbk	SDRA	77%	72%	73%	75%	75%	74%	3

Lampiran 6 : Perhitungan Rasio NIM

No	Keterangan	Kode Bank	2013	2014	2015	2016	2017	RATA2	Peringkat Komposit
1	Bank Rakyat Indonesia Agroniaga Tbk	AGRO	5,31%	4,62%	4,77%	4,35%	3,76%	4,56%	1
2	Bank Agris Tbk	AGRS	4,12%	2,78%	3,24%	3,43%	3,17%	3,35%	1
3	Bank MNC Internasional Tbk	BABP	4,84%	3,43%	3,32%	3,28%	3,04%	3,58%	1
4	Bank Capital Indonesia	BACA	4,67%	3,96%	4,73%	4,37%	4,21%	4,39%	1
5	Bank Central Asia Tbk	BBCA	6,20%	6,50%	6,70%	6,80%	6,20%	6,48%	1
6	Bank Bukopin Tbk	BBKP	3,82%	3,70%	3,58%	3,93%	2,89%	3,58%	1
7	Bank Nusantara Parahyangan Tbk	BBNP	5,16%	4,69%	5,18%	6,13%	6,12%	5,46%	1
8	Bank Danamon Indonesia Tbk	BDMN	9,60%	8,40%	8,30%	8,90%	9,30%	8,90%	1
9	Bank QNB Indonesia Tbk	BKSW	2,82%	2,8%	3,08%	2,25%	1,22%	2,43%	2
10	Bank Maspion Indonesia	BMAS	5,07%	4,93%	4,42%	5,28%	4,95%	4,93%	1
11	Bank CIMB Niaga Tbk	BNGA	5,34%	5,36%	5,21%	5,64%	5,60%	5,43%	1
12	Bank Maybank Indonesia Tbk	BNII	4,94%	4,76%	4,84%	5,18%	5,17%	4,98%	1
13	Bank Permata Tbk	BNLI	4,20%	3,60%	4,00%	3,90%	4,00%	3,94%	1
14	Bank Sinarmas Tbk	BSIM	5,23%	5,87%	5,77%	6,44%	6,46%	5,95%	1
15	Bank of India Indonesia Tbk	BSWD	5,92%	4,97%	3,70%	3,69%	3,39%	4,33%	1
16	Bank Artha Graha Internasional Tbk	INPC	5,31%	4,75%	4,56%	4,65%	5,15%	4,88%	1
17	Bank Mayapada Internasional Tbk	MAYA	5,75%	4,52%	4,78%	5,16%	4,26%	4,89%	1
18	Bank Mega Tbk	MEGA	5,38%	5,27%	6,04%	7,01%	5,80%	5,90%	1
19	Bank OCBC NISP Tbk	NISP	4,11%	4,15%	4,07%	4,62%	4,47%	4,28%	1
20	Bank Pan Indonesia Tbk	PNBN	4,09%	3,06%	4,61%	5,03%	4,68%	4,29%	1
21	Bank Woori saudara Indonesia 1906 Tbk	SDRA	3,83%	1,89%	4,74%	4,74%	4,86%	4,01%	1

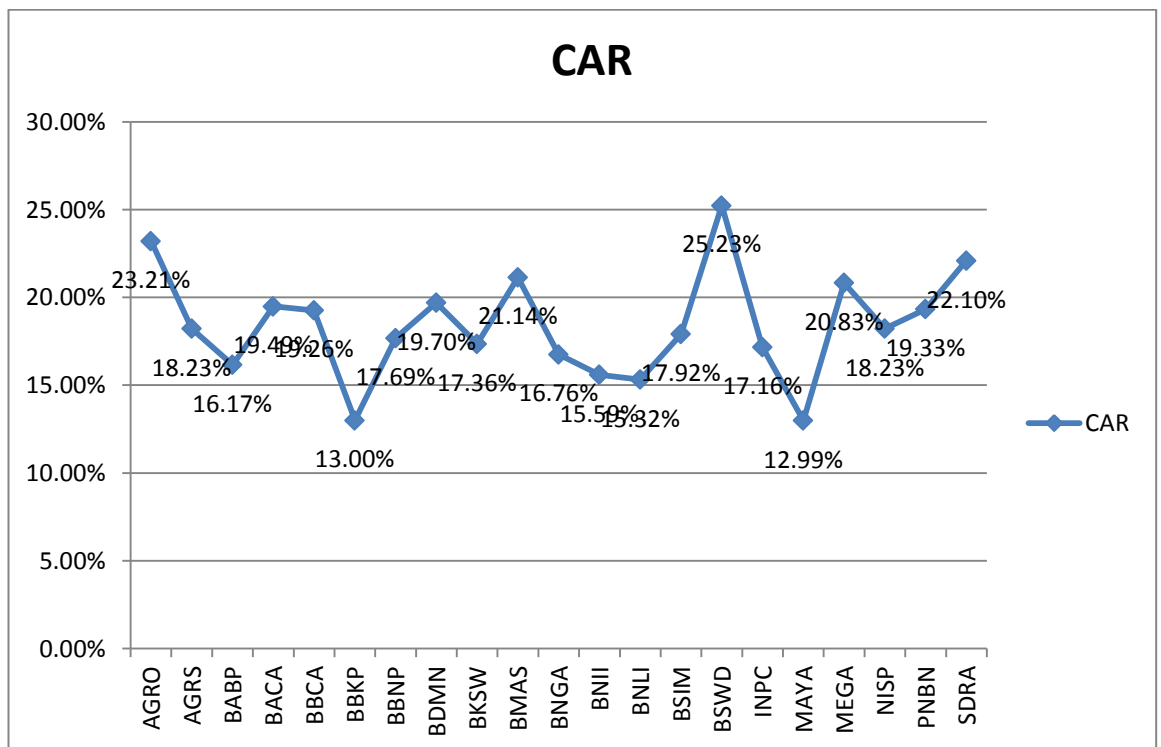
Lampiran 7 : Perhitungan Rasio NPL

No	Keterangan	Kode Bank	2013	2014	2015	2016	2017	RATA2	Peringkat Komposit
1	Bank Rakyat Indonesia Agroniaga Tbk	AGRO	3%	2%	2%	3%	3%	3%	2
2	Bank Artha Graha Internasional Tbk	INPC	1%	1%	1%	1%	2%	1%	1
3	Bank Bukopin Tbk	BBKP	2%	2%	2%	3%	3%	2%	2
4	Bank MNC Internasional Tbk	BABP	3%	2%	1%	1%	5%	2%	2
5	Bank Central Asia Tbk	BBCA	2%	2%	2%	2%	3%	2%	2
6	Bank CIMB Niaga Tbk	BNGA	3%	3%	4%	4%	4%	4%	2
7	Bank Danamon Indonesia Tbk	BDMN	2%	3%	3%	4%	3%	3%	2
8	Bank Woori saudara Indonesia 1906 Tbk	SDRA	1%	1%	1%	1%	1%	1%	1
9	Bank Maybank Indonesia Tbk	BNII	1%	1%	2%	2%	2%	2%	1
10	Bank QNB Indonesia Tbk	BKSW	0%	0%	0%	4%	3%	2%	1
11	Bank Maspion Indonesia	BMAS	0%	0%	0%	0%	0%	0%	1
12	Bank Mayapada Internasional Tbk	MAYA	1%	0%	0%	1%	2%	1%	1
13	Bank Mega Tbk	MEGA	1%	1%	2%	2%	1%	2%	1
14	Bank Nusantara Parahyangan Tbk	BBNP	1%	1%	2%	2%	3%	2%	1
15	Bank OCBC NISP Tbk	NISP	2%	2%	2%	3%	4%	3%	2
16	Bank Pan Indonesia Tbk	PNBN	2%	2%	2%	2%	3%	2%	2
17	Bank Permata Tbk	BNLI	1%	2%	3%	12%	10%	5%	3
18	Bank Sinarmas Tbk	BSIM	1%	1%	1%	1%	2%	1%	1
19	Bank of India Indonesia Tbk	BSWD	1%	1%	5%	12%	2%	4%	2
20	Bank Capital Indonesia	BACA	0%	0%	0%	0%	0%	0%	1
21	Bank Agris Tbk	AGRS	0%	0%	0%	1%	1%	0%	1

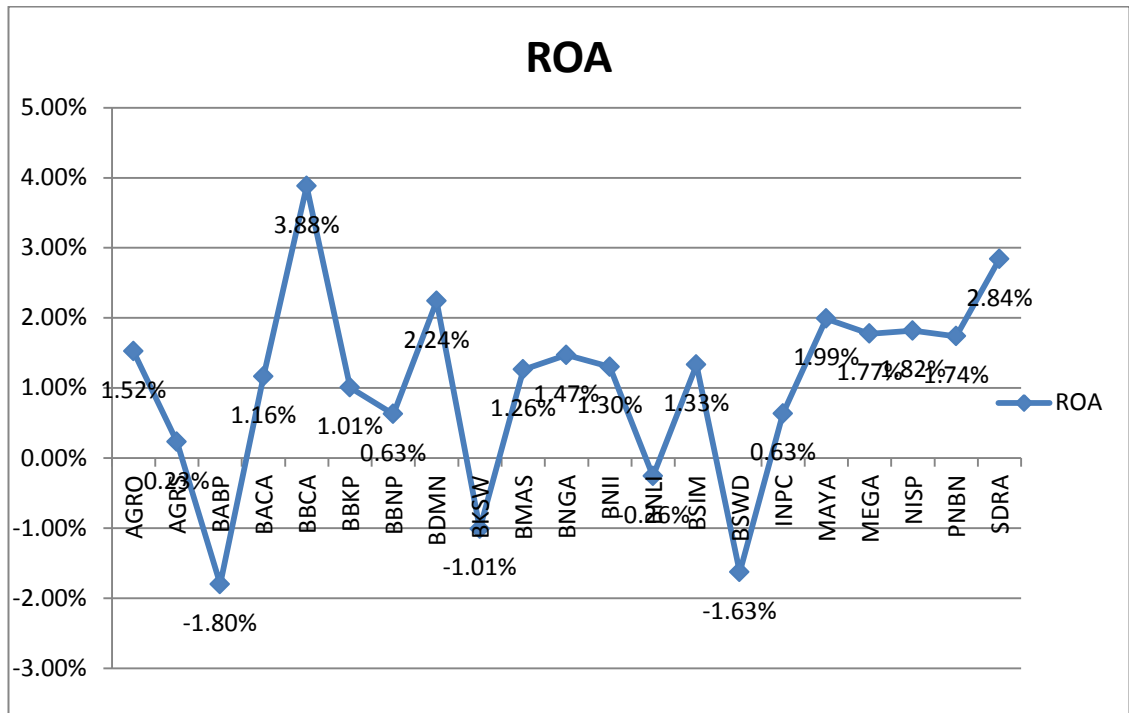
Lampiran 8 : Perhitungan Rasio GCG

No	Keterangan	Kode Bank	2013	2014	2015	2016	2017	RATA2	Peringkat Komposit
1	Bank Rakyat Indonesia Agroniaga Tbk	AGRO	2	2	1	2	1	2	2
2	Bank Agris Tbk	AGRS	1	2	2	1	2	2	2
3	Bank MNC Internasional Tbk	BABP	1	1	1	2	1	1	1
4	Bank Capital Indonesia	BACA	2	2	1	2	1	2	2
5	Bank Central Asia Tbk	BBCA	1	1	1	1	1	1	1
6	Bank Bukopin Tbk	BBKP	2	2	1	1	1	1	1
7	Bank Nusantara Parahyangan Tbk	BBNP	2	2	2	2	2	2	2
8	Bank Danamon Indonesia Tbk	BDMN	2	2	1	1	1	1	1
9	Bank QNB Indonesia Tbk	BKSW	1	2	2	2	1	2	2
10	Bank Maspion Indonesia	BMAS	2	2	1	1	1	1	1
11	Bank CIMB Niaga Tbk	BNGA	1	1	1	1	1	1	1
12	Bank Maybank Indonesia Tbk	BNII	2	2	1	2	2	2	2
13	Bank Permata Tbk	BNLI	2	2	1	1	1	1	1
14	Bank Sinarmas Tbk	BSIM	2	2	1	1	2	2	2
15	Bank of India Indonesia Tbk	BSWD	2	2	1	1	1	1	1
16	Bank Artha Graha Internasional Tbk	INPC	2	2	1	1	2	2	2
17	Bank Mayapada Internasional Tbk	MAYA	2	2	1	1	1	1	1
18	Bank Mega Tbk	MEGA	2	2	1	1	1	1	1
19	Bank OCBC NISP Tbk	NISP	2	2	1	1	1	1	1
20	Bank Pan Indonesia Tbk	PNBN	1	1	1	2	1	1	1
21	Bank Woori saudara Indonesia 1906 T	SDRA	2	2	2	1	1	2	2

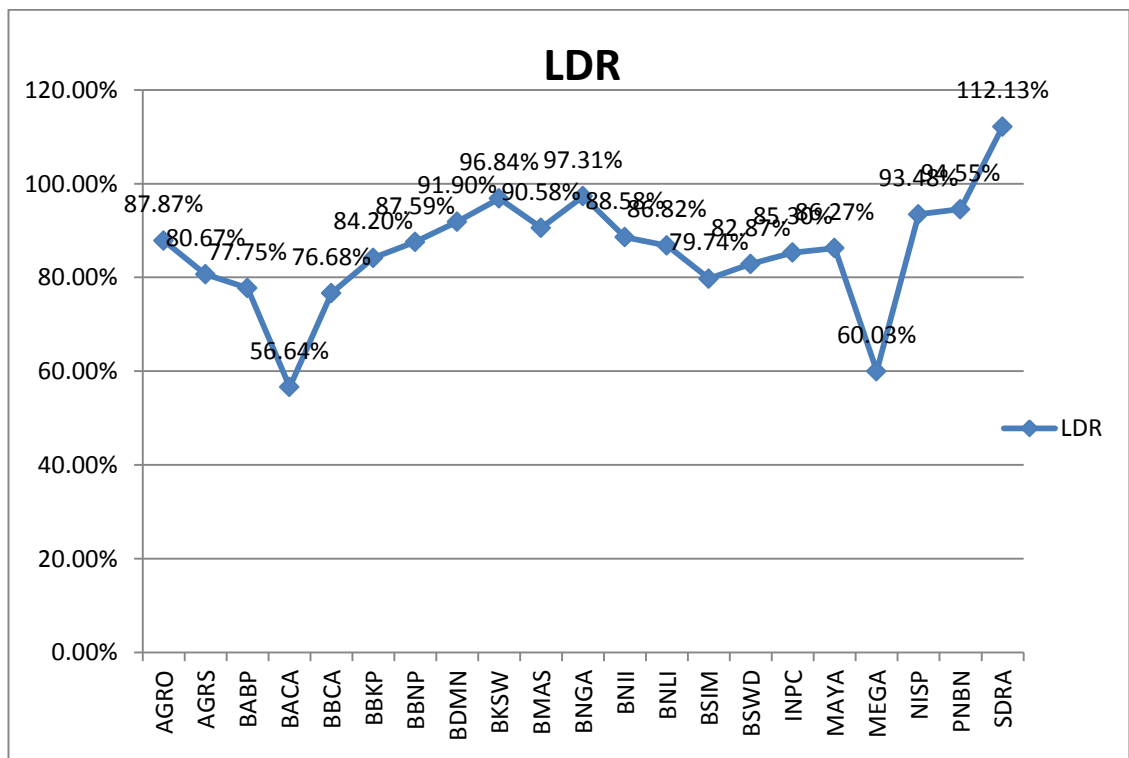
Lampiran 9 : Grafik Rata-Rata Rasio CAR 2013-2017



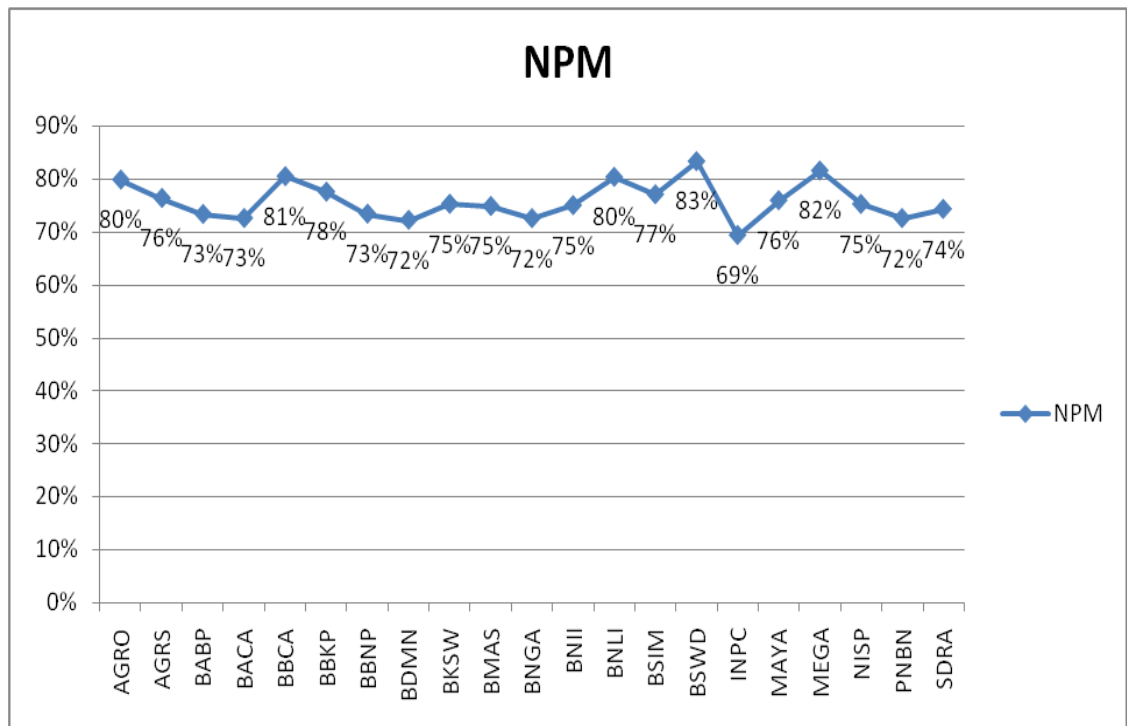
Lampiran 10 : Grafik Rata-Rata Rasio ROA 2013-2017



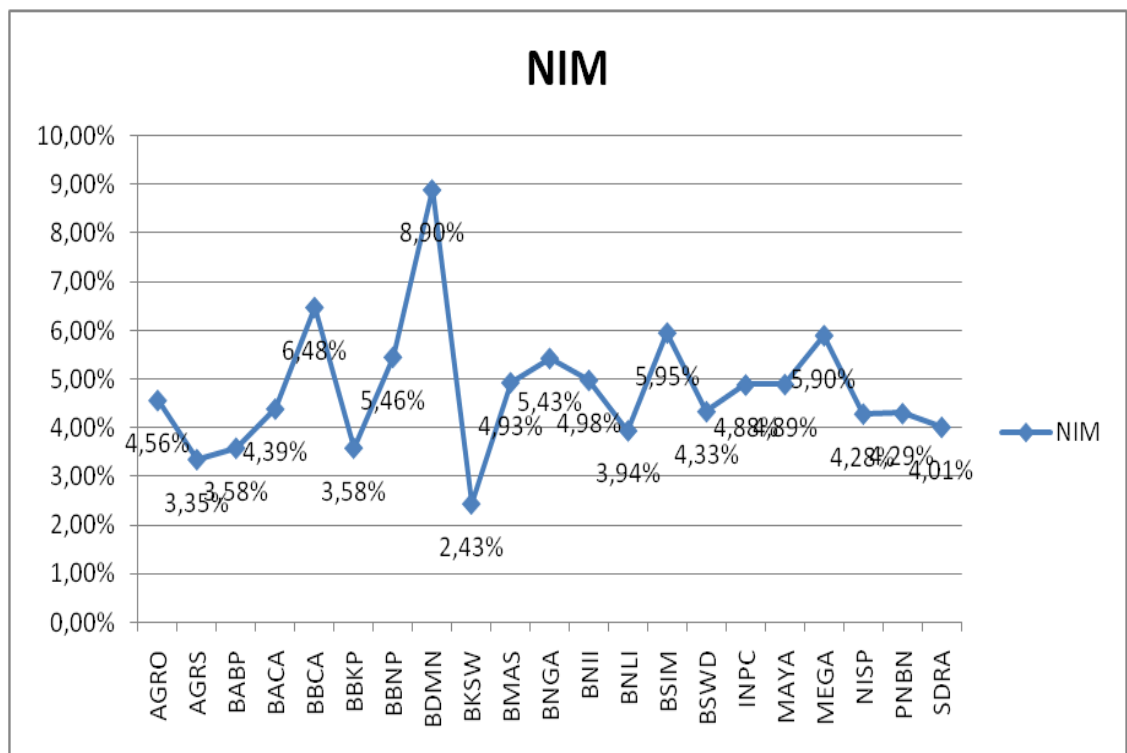
Lampiran 11 : Grafik Rata-Rata Rasio LDR 2013-2017



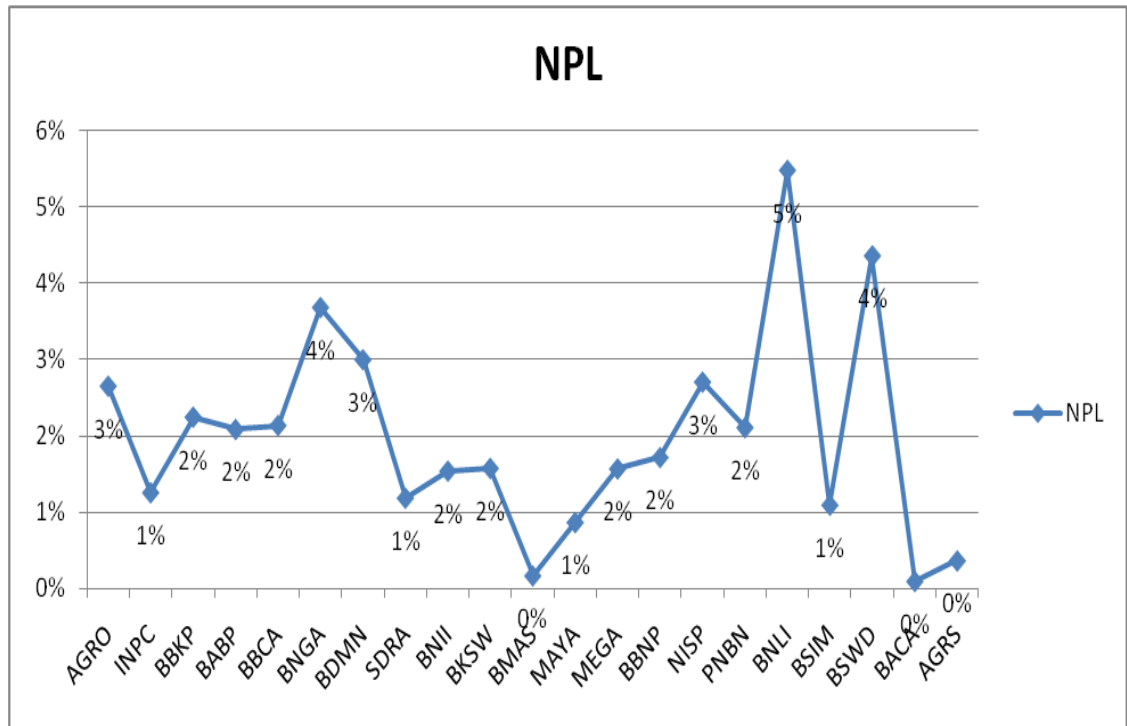
Lampiran 12 : Grafik Rata-Rata Rasio NPM 2013-2017



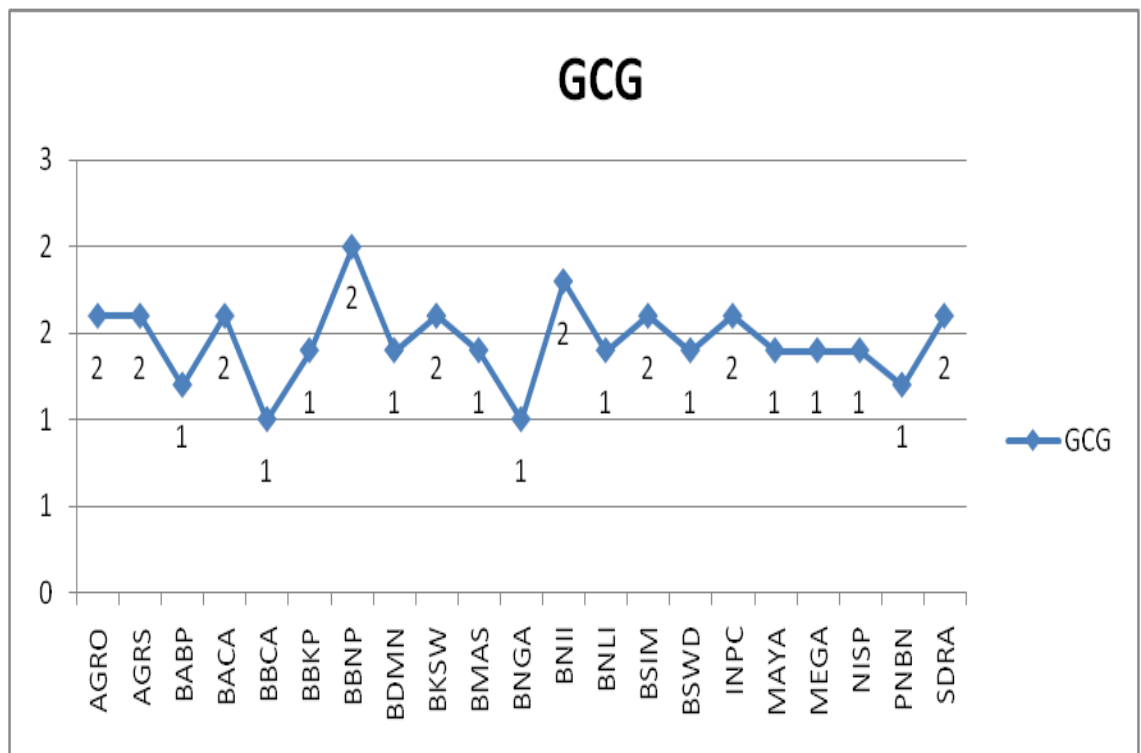
Lampiran 13 : Grafik Rata-Rata Rasio NIM 2013-2017



Lampiran 14 : Grafik Rata-Rata Rasio NPL 2013-2017



Lampiran 15 : Grafik Rata-Rata Rasio GCG 2013-2017



Lampiran 16 : Komposit Metode Camels 2013-2017

No	Keterangan	Kode	RASIO	2013	2014	2015	2016	2017	RATA2
1	Bank Rakyat Indonesia Agroniaga Tbk	AGRO	CAR	1	1	1	1	1	1
			NPL	2	1	1	2	2	2
			NPM	3	3	2	3	3	3
			ROA	2	2	2	2	2	2
			LDR	3	3	3	3	3	3
Rata-Rata									2
2	Bank Agris Tbk	AGRS	CAR	1	1	1	1	1	1
			NPL	1	1	1	1	1	1
			NPM	2	3	4	4	1	3
			ROA	3	4	4	4	5	4
			LDR	3	1	2	2	2	2
Rata-Rata									2
3	Bank MNC Internasional Tbk	BABP	CAR	1	1	1	1	1	1
			NPL	2	1	1	1	2	1
			NPM	1	3	3	5	3	3
			ROA	5	5	4	4	5	5
			LDR	2	2	1	2	2	2
Rata-Rata									2
4	Bank Capital Indonesia	BACA	CAR	1	1	1	1	1	1
			NPL	1	1	1	1	1	1
			NPM	3	3	3	3	3	3
			ROA	2	2	3	3	3	3
			LDR	1	1	1	1	1	1
Rata-Rata									2
5	Bank Central Asia Tbk	BBCA	CAR	1	1	1	1	1	1
			NPL	1	1	1	1	2	1
			NPM	2	3	3	3	3	3
			ROA	1	1	1	1	1	1
			LDR	2	2	2	2	2	2
Rata-Rata									2
6	Bank Bukopin Tbk	BBKP	CAR	1	1	1	1	1	1
			NPL	1	1	1	2	2	1
			NPM	3	3	2	5	1	3
			ROA	2	3	2	3	4	3
			LDR	3	2	3	2	2	2
Rata-Rata									2
7	Bank Nusantara Parahyangan Tbk	BBNP	CAR	1	1	1	1	1	1
			NPL	1	1	1	1	2	1
			NPM	3	3	3	5	2	3
			ROA	2	2	3	4	5	3
			LDR	2	3	3	2	3	3
Rata-Rata									2
8	Bank Danamon Indonesia Tbk	BDMN	CAR	1	1	1	1	1	1
			NPL	1	2	2	2	2	2
			NPM	3	3	3	4	2	3
			ROA	1	2	2	1	1	1
			LDR	4	3	3	3	3	3
Rata-Rata									2

9	Bank QNB Indonesia Tbk	BKSW	CAR	1	1	1	1	1	1
			NPL	1	1	1	2	2	1
			NPM	3	3	3	3	2	3
			ROA	4	3	3	5	5	4
			LDR	4	3	4	3	1	3
Rata-Rata									2
10	Bank Maspion Indonesia	BMAS	CAR	1	1	1	1	1	1
			NPL	1	1	1	1	1	1
			NPM	3	3	3	3	3	3
			ROA	3	3	3	2	2	3
			LDR	3	2	3	3	3	3
Rata-Rata									2
11	Bank CIMB Niaga Tbk	BNGA	CAR	1	1	1	1	1	1
			NPL	2	2	2	2	2	2
			NPM	3	3	4	3	3	3
			ROA	1	2	4	3	2	2
			LDR	3	3	3	3	3	3
Rata-Rata									2
12	Bank Maybank Indonesia Tbk	BNII	CAR	1	1	1	1	1	1
			NPL	1	1	1	1	1	1
			NPM	3	3	3	3	3	3
			ROA	2	3	3	2	2	2
			LDR	3	3	3	3	3	3
Rata-Rata									2
13	Bank Permata Tbk	BNLI	CAR	1	1	1	1	1	1
			NPL	1	1	2	4	4	2
			NPM	2	3	2	3	3	3
			ROA	2	3	4	5	3	3
			LDR	3	3	3	2	3	3
Rata-Rata									2
14	Bank Sinarmas Tbk	BSIM	CAR	1	1	1	1	1	1
			NPL	1	1	1	1	1	1
			NPM	3	3	3	3	3	3
			ROA	2	3	3	2	2	2
			LDR	2	2	2	2	2	2
Rata-Rata									2
15	Bank of India Indonesia Tbk	BSWD	CAR	1	1	1	1	1	1
			NPL	1	1	2	4	1	2
			NPM	3	3	2	2	2	2
			ROA	1	1	5	5	5	3
			LDR	3	3	2	2	1	2
Rata-Rata									2
16	Bank Artha Graha Internasional Tbk	INPC	CAR	1	1	1	1	1	1
			NPL	1	1	1	1	1	1
			NPM	3	4	3	3	3	3
			ROA	2	3	4	4	4	3
			LDR	3	3	2	3	2	3
Rata-Rata									2
17	Bank Mayapada Internasional Tbk	MAYA	CAR	1	2	1	1	1	1
			NPL	1	1	1	1	1	1
			NPM	3	3	3	3	3	3
			ROA	1	2	1	1	2	1
			LDR	3	2	2	3	3	3
Rata-Rata									2

18	Bank Mega Tbk	MEGA	CAR	1	1	1	1	1	1
			NPL	1	1	1	1	1	1
			NPM	2	2	2	3	3	2
			ROA	3	3	2	1	1	2
			LDR	1	1	1	1	1	1
Rata-Rata									1
19	Bank OCBC NISP Tbk	NISP	CAR	1	1	1	1	1	1
			NPL	1	1	1	2	2	1
			NPM	3	3	3	3	3	3
			ROA	2	2	2	2	2	2
			LDR	3	3	3	3	3	3
Rata-Rata									2
20	Bank Pan Indonesia Tbk	PNBN	CAR	1	1	1	1	1	1
			NPL	1	1	1	1	2	1
			NPM	3	3	3	3	3	3
			ROA	2	1	3	2	2	2
			LDR	3	3	3	3	3	3
Rata-Rata									2
21	Bank Woori saudara Indonesia 1906 Tbk	SDRA	CAR	1	1	1	1	1	1
			NPL	1	1	1	1	1	1
			NPM	3	3	3	3	3	3
			ROA	1	1	2	2	1	1
			LDR	5	4	3	4	4	4
Rata-Rata									2

Lampiran 17 : Komposit Metode Rgec 2013-2017

No	Keterangan	Kode	RASIO	2013	2014	2015	2016	2017	RATA2
1	Bank Rakyat Indonesia Agroniaga Tbk	AGRO	NPL	2	1	1	2	2	2
			GCG	2	2	1	2	1	2
			NIM	1	1	1	1	1	1
			CAR	1	1	1	1	1	1
Rata-Rata									1
2	Bank Agris Tbk	AGRS	NPL	1	1	1	1	1	1
			GCG	1	2	2	1	2	2
			NIM	1	2	1	1	1	1
			CAR	1	1	1	1	1	1
Rata-Rata									1
3	Bank MNC Internasional Tbk	BABP	NPL	2	1	1	1	2	1
			GCG	1	1	1	2	1	1
			NIM	1	1	1	1	1	1
			CAR	1	1	1	1	1	1
Rata-Rata									1
4	Bank Capital Indonesia	BACA	NPL	1	1	1	1	1	1
			GCG	2	2	1	2	1	2
			NIM	1	1	1	1	1	1
			CAR	1	1	1	1	1	1
Rata-Rata									1

5	Bank Central Asia Tbk	BBCA	NPL	1	1	1	1	2	1
			GCG	1	1	1	1	1	1
			NIM	1	1	1	1	1	1
			CAR	1	1	1	1	1	1
Rata-Rata									1
6	Bank Bukopin Tbk	BBKP	NPL	1	1	1	2	2	1
			GCG	2	2	1	1	1	1
			NIM	1	1	1	1	2	1
			CAR	1	1	1	1	1	1
Rata-Rata									1
7	Bank Nusantara Parahyangan Tbk	BBNP	NPL	1	1	1	1	2	1
			GCG	2	2	2	2	2	2
			NIM	1	1	1	1	1	1
			CAR	1	1	1	1	1	1
Rata-Rata									1
8	Bank Danamon Indonesia Tbk	BDMN	NPL	1	2	2	2	2	2
			GCG	2	2	1	1	1	1
			NIM	1	1	1	1	1	1
			CAR	1	1	1	1	1	1
Rata-Rata									1
9	Bank QNB Indonesia Tbk	BKSW	NPL	1	1	1	2	2	1
			GCG	1	2	2	2	1	2
			NIM	2	2	1	2	4	2
			CAR	1	1	1	1	1	1
Rata-Rata									2
10	Bank Maspion indonesia	BMAS	NPL	1	1	1	1	1	1
			GCG	2	2	1	1	2	2
			NIM	1	1	1	1	1	1
			CAR	1	1	1	1	1	1
Rata-Rata									1
11	Bank CIMB Niaga Tbk	BNGA	NPL	2	2	2	2	2	2
			GCG	1	1	1	1	1	1
			NIM	1	1	1	1	1	1
			CAR	1	1	1	1	1	1
Rata-Rata									1
12	Bank Maybank Indonesia Tbk	BNII	NPL	1	1	1	1	1	1
			GCG	2	2	1	2	2	2
			NIM	1	1	1	1	1	1
			CAR	1	1	1	1	1	1
Rata-Rata									1
13	Bank Permata Tbk	BNLI	NPL	1	1	2	4	4	2
			GCG	2	2	1	1	1	1
			NIM	1	1	1	1	1	1
			CAR	1	1	1	1	1	1
Rata-Rata									1

14	Bank Sinarmas Tbk	BSIM	NPL	1	1	1	1	1	1
			GCG	2	2	1	1	2	2
			NIM	1	1	1	1	1	1
			CAR	1	1	1	1	1	1
Rata-Rata									1
15	Bank of India Indonesia Tbk	BSWD	NPL	1	1	2	4	1	2
			GCG	2	2	1	1	1	1
			NIM	1	1	1	1	1	1
			CAR	1	1	1	1	1	1
Rata-Rata									1
16	Bank Artha Graha Internasional Tbk	INPC	NPL	1	1	1	1	1	1
			GCG	2	2	1	1	2	2
			NIM	1	1	1	1	1	1
			CAR	1	1	1	1	1	1
Rata-Rata									1
17	Bank Mayapada Internasional Tbk	MAYA	NPL	1	1	1	1	1	1
			GCG	2	2	1	1	1	1
			NIM	1	1	1	1	1	1
			CAR	1	2	1	1	1	1
Rata-Rata									1
18	Bank Mega Tbk	MEGA	NPL	1	1	1	1	1	1
			GCG	2	2	1	1	1	1
			NIM	1	1	1	1	1	1
			CAR	1	1	1	1	1	1
Rata-Rata									1
19	Bank OCBC NISP Tbk	NISP	NPL	1	1	1	2	2	1
			GCG	2	2	1	1	1	1
			NIM	1	1	1	1	1	1
			CAR	1	1	1	1	1	1
Rata-Rata									1
20	Bank Pan Indonesia Tbk	PNBN	NPL	1	1	1	1	2	1
			GCG	1	1	1	2	1	1
			NIM	1	1	1	1	1	1
			CAR	1	1	1	1	1	1
Rata-Rata									1
21	Bank Woori saudara Indonesia 1906 Tbk	SDRA	NPL	1	1	1	1	1	1
			GCG	2	2	2	1	1	2
			NIM	1	1	1	1	1	1
			CAR	1	1	1	1	1	1
Rata-Rata									1