

LAMPIRAN

1. Sensor *Infrared*.
2. *Push Button*.
3. Tipe *Push Button*.
4. *Gearbox* Motor DC.
5. Prinsip Kerja Motor DC.
6. Motor Servo SG90.
7. Buzzer.
8. Modul Motor *Driver* L298N.
9. Arduino Mega.
10. Notulen Ujian Skripsi.



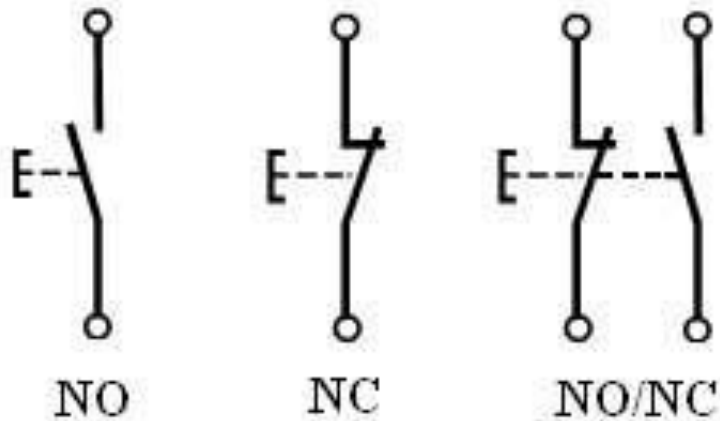
Gambar 2.1 Sensor *Infrared*.

(Sumber : <http://elektronika-dasar.web.id/infra-red-ir-detektor-sensor-infra-merah>)



Gambar 2.5 *Push button*.

Gambar 2.6 <http://listrikduniaterang.blogspot.com/2016/05/pengertian-push-button-dan-prinsip.html>)



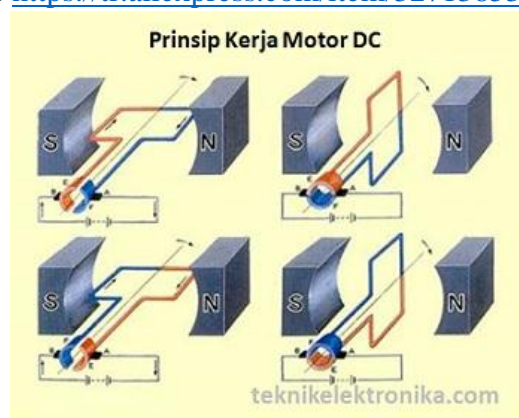
Gambar 2.6 Tipe *Push button*

(Sumber : <https://www.duniapembangkitlistrik.com/2018/04/pengertian-dan-cara-kerja-push-button.html>)



Gambar 2.7 Gearbox Motor DC.

(Sumber <https://tr.aliexpress.com/item/32713853079.html>)



Gambar 2.8 Prinsip Kerja Motor DC

(Sumber : <https://teknikelektronika.com/wp-content/uploads/2017/07/Prinsip-Kerja-Motor-DC.jpg?x65800>)



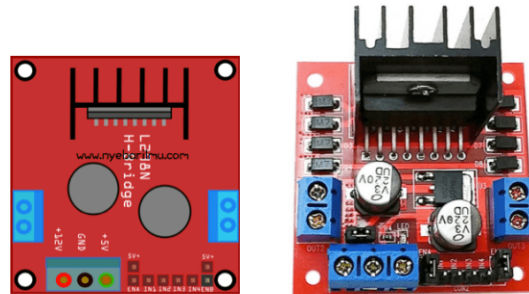
Gambar 2.10 Motor Servo SG90.

(Sumber <https://robu.in/product/towerpro-sg90-9gm-1-2kg-180-degree-rotation-servo-motor-good-quality/>)



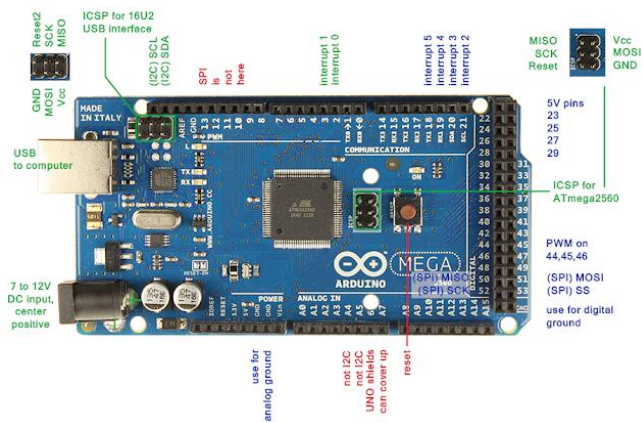
Gambar 2.11 Buzzer.

(Sumber https://sea.banggood.com/5-PCS-Super-Loud-5V-Active-Alarm-Buzzer-Beeper-Tracker-95_5mm-for-Racing-Drone-p-1117207.html?cur_warehouse=CN)



Gambar 2.12 Modul Motor Driver L298N

(Sumber <https://www.nyebarilmu.com/tutorial-arduino-mengakses-driver-motor-l298n/>)



Gambar 2.14 Arduino Mega

(Sumber : <http://www.labelektronika.com/2017/02/arduino-mega-2560>)