

LAMPIRAN

HASIL PENGUJIAN

A. Hasil Pengujian CBIR Menggunakan *Euclidean Distance*

Query 1

cbires

Num of images returned: 20

Similarity Metrics: Euclidean

Query data baru: Browse image... Query

Operations: Select Image Directory, Load Dataset, Create DB of Image Features

Returned Images: Query Image, 20 search results (16 matches)

$\frac{\text{jumlah citra pada setiap wajah}}{\text{citra wajah cocok yang terpanggil}}$

$$\frac{16}{20} = 0.8 \times 100 = 80 \%$$

Query 2

cbires

Num of images returned: 20

Similarity Metrics: Euclidean

Query data baru: Browse image... Query

Operations: Select Image Directory, Load Dataset, Create DB of Image Features

Returned Images: Query Image, 20 search results (15 matches)

$\frac{\text{jumlah citra pada setiap wajah}}{\text{citra wajah cocok yang terpanggil}}$

$$\frac{15}{20} = 0.75 \times 100 = 75 \%$$

Query 3

cbires

Num of images returned: 20

Similarity Matrices: Euclidean

Query data baru: Browse image... Query

Operations: Select Image Directory, Load Dataset, Create DB of Image Features

Returned Images

Query Image

$$\frac{\text{jumlah citra pada setiap wajah}}{\text{citra wajah cocok yang terpanggil}}$$

$$\frac{20}{20} = 1 \times 100 = 100 \%$$

Query 4

cbires

Num of images returned: 20

Similarity Matrices: Euclidean

Query data baru: Browse image... Query

Operations: Select Image Directory, Load Dataset, Create DB of Image Features

Returned Images

Query Image

$$\frac{\text{jumlah citra pada setiap wajah}}{\text{citra wajah cocok yang terpanggil}}$$

$$\frac{16}{20} = 0.8 \times 100 = 80 \%$$

Query 5

$\frac{\text{jumlah citra pada setiap wajah}}{\text{citra wajah cocok yang terpanggil}}$

$$\frac{16}{20} = 0.8 \times 100 = 80 \%$$

Query 6

$\frac{\text{jumlah citra pada setiap wajah}}{\text{citra wajah cocok yang terpanggil}}$

$$\frac{16}{20} = 0.8 \times 100 = 80 \%$$

Query 7

cbires

Num of images returned: 20

Similarity Matrics: Euclidean

Query data baru: Browse image...

Query

Operations: Select Image Directory, Load Dataset, Create DB of Image Features

Returned Images

Query Image

$\frac{\text{jumlah citra pada setiap wajah}}{\text{citra wajah cocok yang terpanggil}}$

$$\frac{18}{20} = 0.9 \times 100 = 90 \%$$

Query 8

cbires

Num of images returned: 20

Similarity Matrics: Euclidean

Query data baru: Browse image...

Query

Operations: Select Image Directory, Load Dataset, Create DB of Image Features

Returned Images

Query Image

$\frac{\text{jumlah citra pada setiap wajah}}{\text{citra wajah cocok yang terpanggil}}$

$$\frac{16}{20} = 0.8 \times 100 = 80 \%$$

Query 9

*jumlah citra pada setiap wajah
citra wajah cocok yang terpanggil*

$$\frac{17}{20} = 0.85 \times 100 = 85 \%$$

Query 10

*jumlah citra pada setiap wajah
citra wajah cocok yang terpanggil*

$$\frac{18}{20} = 0.9 \times 100 = 90 \%$$

Query 11

cbires

Num of images returned: 20

Similarity Matrics: Euclidean

Query data baru: Browse image... Query

Operations: Select Image Directory, Load Dataset, Create DB of Image Features

Returned Images

Query Image

21 returned images in a 3x7 grid.

$$\frac{\text{jumlah citra pada setiap wajah}}{\text{citra wajah cocok yang terpanggil}}$$

$$\frac{10}{20} = 0.5 \times 100 = 50 \%$$

Query 12

cbires

Num of images returned: 20

Similarity Matrics: Euclidean

Query data baru: Browse image... Query

Operations: Select Image Directory, Load Dataset, Create DB of Image Features

Returned Images

Query Image

21 returned images in a 3x7 grid.

$$\frac{\text{jumlah citra pada setiap wajah}}{\text{citra wajah cocok yang terpanggil}}$$

$$\frac{18}{20} = 0.9 \times 100 = 90 \%$$

Query 13

jumlah citra pada setiap wajah
citra wajah cocok yang terpanggil

$$\frac{15}{20} = 0.75 \times 100 = 75 \%$$

Query 14

jumlah citra pada setiap wajah
citra wajah cocok yang terpanggil

$$\frac{19}{20} = 0.95 \times 100 = 95 \%$$

Query 15

Num of images returned: 20

Similarity Matrics: Euclidean

Query data baru: Browse image...

Query

Operations: Select Image Directory, Load Dataset, Create DB of Image Features

Returned Images: Query Image (1), 20 similar images

$$\frac{\text{jumlah citra pada setiap wajah}}{\text{citra wajah cocok yang terpanggil}}$$

$$\frac{14}{20} = 0.7 \times 100 = 70 \%$$

Query 16

Num of images returned: 20

Similarity Matrics: Euclidean

Query data baru: Browse image...

Query

Operations: Select Image Directory, Load Dataset, Create DB of Image Features

Returned Images: Query Image (1), 20 similar images

$$\frac{\text{jumlah citra pada setiap wajah}}{\text{citra wajah cocok yang terpanggil}}$$

$$\frac{16}{20} = 0.8 \times 100 = 80 \%$$

Query 17

Num of Images returned: 20

Similarity Matrices: Euclidean

Query data baru: Browse image... Query

Operations: Select Image Directory, Load Dataset, Create DB of Image Features

Returned Images: Query Image, 20 search results (17 similar)

$\frac{\text{jumlah citra pada setiap wajah}}{\text{citra wajah cocok yang terpanggil}}$

$$\frac{17}{20} = 0.85 \times 100 = 85 \%$$

Query 18

Num of Images returned: 20

Similarity Matrices: Euclidean

Query data baru: Browse image... Query

Operations: Select Image Directory, Load Dataset, Create DB of Image Features

Returned Images: Query Image, 20 search results (15 similar)

$\frac{\text{jumlah citra pada setiap wajah}}{\text{citra wajah cocok yang terpanggil}}$

$$\frac{15}{20} = 0.75 \times 100 = 75 \%$$

Query 19

Num of images returned: 20

Similarity Matrics: Euclidean

Query data baru: Browse image... Query

Operations: Select Image Directory, Load Dataset, Create DB of Image Features

Returned Images: Query Image, 20 other face images

$\frac{\text{jumlah citra pada setiap wajah}}{\text{citra wajah cocok yang terpanggil}}$

$$\frac{16}{20} = 0.8 \times 100 = 80 \%$$

Query 20

Num of images returned: 20

Similarity Matrics: Euclidean

Query data baru: Browse image... Query

Operations: Select Image Directory, Load Dataset, Create DB of Image Features

Returned Images: Query Image, 20 other face images

$\frac{\text{jumlah citra pada setiap wajah}}{\text{citra wajah cocok yang terpanggil}}$

$$\frac{17}{20} = 0.85 \times 100 = 85 \%$$

B. Hasil Pengujian CBIR Menggunakan *Manhattan Distance*

Query 1

$\frac{\text{jumlah citra pada setiap wajah}}{\text{citra wajah cocok yang terpanggil}}$

$$\frac{19}{20} = 0.95 \times 100 = 95 \%$$

Query 2

$\frac{\text{jumlah citra pada setiap wajah}}{\text{citra wajah cocok yang terpanggil}}$

$$\frac{16}{20} = 0.7 \times 100 = 70\%$$

Query 3

The screenshot shows the cbiress software interface. In the top left, 'Num of images returned' is set to 20 and 'Similarity Matrics' is set to Manhattan. The 'Returned Images' section displays a 3x7 grid of 21 fundus images, with the first image labeled 'Query Image'.

$\frac{\text{jumlah citra pada setiap wajah}}{\text{citra wajah cocok yang terpanggil}}$

$$\frac{20}{20} = 1 \times 100 = 100 \%$$

Query 4

The screenshot shows the cbiress software interface. In the top left, 'Num of images returned' is set to 20 and 'Similarity Matrics' is set to Manhattan. The 'Returned Images' section displays a 3x7 grid of 21 fundus images, with the first image labeled 'Query Image'.

$\frac{\text{jumlah citra pada setiap wajah}}{\text{citra wajah cocok yang terpanggil}}$

$$\frac{15}{20} = 0,75 \times 100 = 75 \%$$

Query 5

cbires

Num of Images returned: 20

Similarity Matrics: Manhattan

Query data baru: Browse image...

Query

Operations: Select Image Directory, Load Dataset, Create DB of Image Features

Returned Images

Query Image

jumlah citra pada setiap wajah
citra wajah cocok yang terpanggil

$$\frac{20}{20} = 1 \times 100 = 100 \%$$

Query 6

cbires

Num of Images returned: 20

Similarity Matrics: Manhattan

Query data baru: Browse image...

Query

Operations: Select Image Directory, Load Dataset, Create DB of Image Features

Returned Images

Query Image

jumlah citra pada setiap wajah
citra wajah cocok yang terpanggil

$$\frac{20}{20} = 1 \times 100 = 100 \%$$

Query 7

cbires

Num of images returned: 20

Similarity Matrics: Manhattan

Query data baru: Browse image... Query

Operations: Select Image Directory, Load Dataset, Create DB of Image Features

Returned Images

Query Image

jumlah citra pada setiap wajah
citra wajah cocok yang terpanggil

$$\frac{18}{20} = 0,9 \times 100 = 90 \%$$

Query 8

cbires

Num of images returned: 20

Similarity Matrics: Manhattan

Query data baru: Browse image... Query

Operations: Select Image Directory, Load Dataset, Create DB of Image Features

Returned Images

Query Image

jumlah citra pada setiap wajah
citra wajah cocok yang terpanggil

$$\frac{20}{20} = 1 \times 100 = 100 \%$$

Query 9

Num of images returned: 20

Similarity Matrices: Manhattan

Query data baru: Browse image... Query

Operations: Select Image Directory, Load Dataset, Create DB of Image Features

Returned Images: Query Image (21 images total)

jumlah citra pada setiap wajah
citra wajah cocok yang terpanggil

$$\frac{20}{20} = 1 \times 100 = 100 \%$$

Query 10

Num of images returned: 20

Similarity Matrices: Manhattan

Query data baru: Browse image... Query

Operations: Select Image Directory, Load Dataset, Create DB of Image Features

Returned Images: Query Image (21 images total)

jumlah citra pada setiap wajah
citra wajah cocok yang terpanggil

$$\frac{19}{20} = 0,95 \times 100 = 95 \%$$

Query 11

cbires

Num of images returned: 20

Similarity Matrics: Manhattan

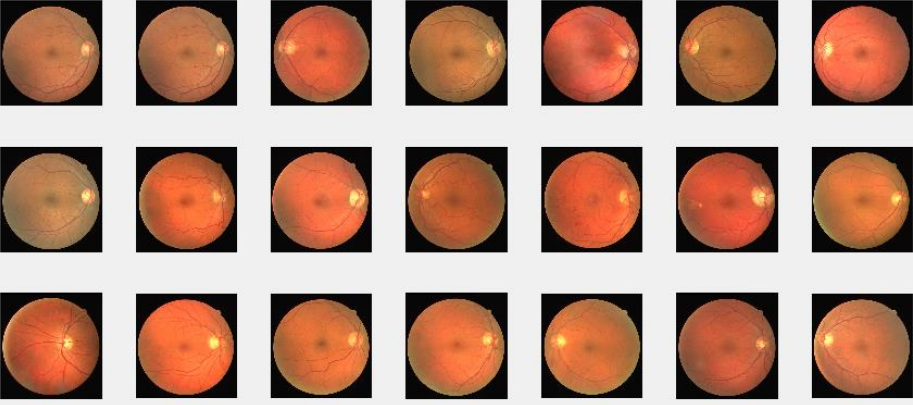
Query data baru: Browse image...

Query

Operations: Select Image Directory, Load Dataset, Create DB of Image Features

Returned Images

Query Image



*jumlah citra pada setiap wajah
citra wajah cocok yang terpanggil*

$$\frac{20}{20} = 1 \times 100 = 100 \%$$

Query 12

cbires

Num of images returned: 20

Similarity Matrics: Manhattan

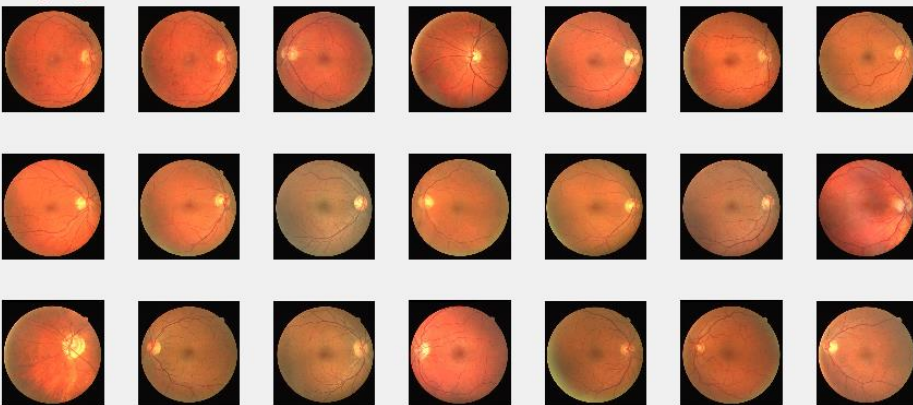
Query data baru: Browse image...

Query

Operations: Select Image Directory, Load Dataset, Create DB of Image Features

Returned Images

Query Image



*jumlah citra pada setiap wajah
citra wajah cocok yang terpanggil*

$$\frac{20}{20} = 1 \times 100 = 100 \%$$

Query 13

cbires

Num of images returned: 20

Similarity Matrics: Manhattan

Query data baru: Browse image... Query

Operations: Select Image Directory, Load Dataset, Create DB of Image Features

Returned Images

Query Image

jumlah citra pada setiap wajah
citra wajah cocok yang terpanggil

$$\frac{19}{20} = 0,95 \times 100 = 95 \%$$

Query 14

cbires

Num of images returned: 20

Similarity Matrics: Manhattan

Query data baru: Browse image... Query

Operations: Select Image Directory, Load Dataset, Create DB of Image Features

Returned Images

Query Image

jumlah citra pada setiap wajah
citra wajah cocok yang terpanggil

$$\frac{17}{20} = 0,85 \times 100 = 85 \%$$

Query 15

Num of images returned: 20

Similarity Matrics: Manhattan

Query data baru: Browse image...

Query

Operations: Select Image Directory, Load Dataset, Create DB of Image Features

Returned Images: Query Image, 20 similar images

$\frac{\text{jumlah citra pada setiap wajah}}{\text{citra wajah cocok yang terpanggil}}$

$$\frac{19}{20} = 0,95 \times 100 = 95 \%$$

Query 16

Num of images returned: 20

Similarity Matrics: Manhattan

Query data baru: Browse image...

Query

Operations: Select Image Directory, Load Dataset, Create DB of Image Features

Returned Images: Query Image, 20 similar images

$\frac{\text{jumlah citra pada setiap wajah}}{\text{citra wajah cocok yang terpanggil}}$

$$\frac{17}{20} = 0,85 \times 100 = 85 \%$$

Query 17

Num of images returned: 20

Similarity Matrics: Manhattan

Query data baru: Browse image... Query

Operations: Select Image Directory, Load Dataset, Create DB of Image Features

Returned Images:

Query Image

jumlah citra pada setiap wajah
citra wajah cocok yang terpanggil

$$\frac{20}{20} = 1 \times 100 = 100 \%$$

Query 18

Num of images returned: 20

Similarity Matrics: Manhattan

Query data baru: Browse image... Query

Operations: Select Image Directory, Load Dataset, Create DB of Image Features

Returned Images:

Query Image

jumlah citra pada setiap wajah
citra wajah cocok yang terpanggil

$$\frac{20}{20} = 1 \times 100 = 100 \%$$

Query 19

Num of images returned: 20

Similarity Matrics: Manhattan

Query data baru: Browse image... Query

Operations: Select Image Directory, Load Dataset, Create DB of Image Features

Returned Images: Query Image (19 similar faces)

$\frac{\text{jumlah citra pada setiap wajah}}{\text{citra wajah cocok yang terpanggil}}$

$$\frac{19}{20} = 0,95 \times 100 = 95 \%$$

Query 20

Num of images returned: 20

Similarity Matrics: Manhattan

Query data baru: Browse image... Query

Operations: Select Image Directory, Load Dataset, Create DB of Image Features

Returned Images: Query Image (19 similar faces)

$\frac{\text{jumlah citra pada setiap wajah}}{\text{citra wajah cocok yang terpanggil}}$

$$\frac{19}{20} = 0,95 \times 100 = 95 \%$$

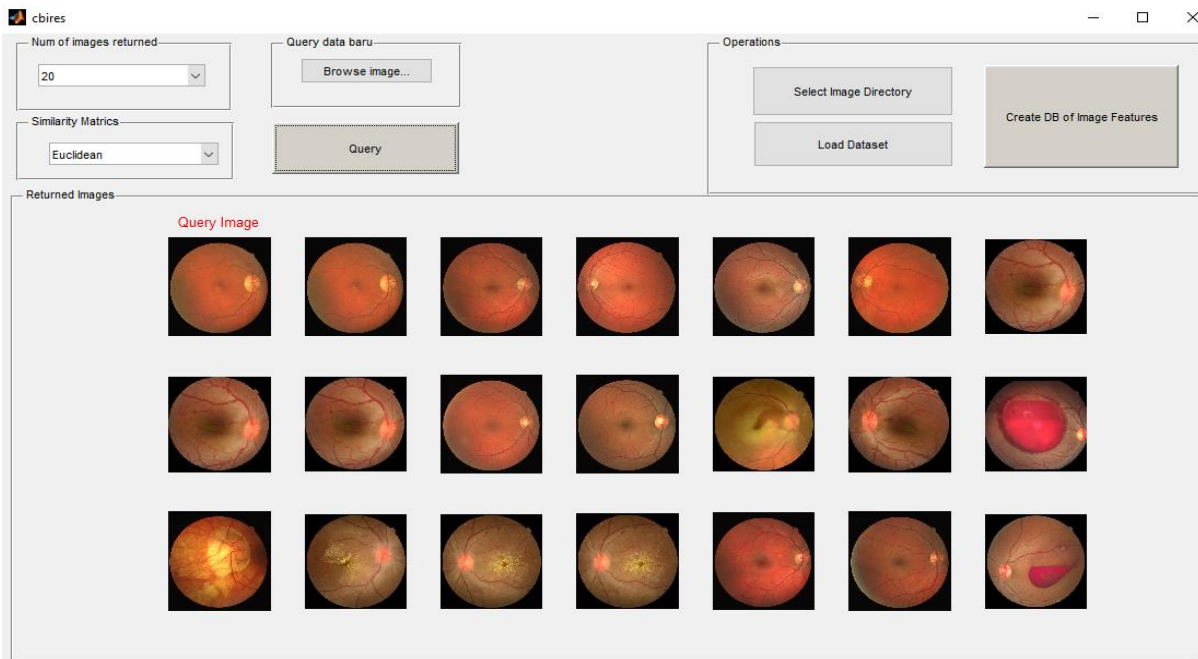
C. Hasil Pengujian CBIR Menggunakan *Minkowski Distance*

Query 1



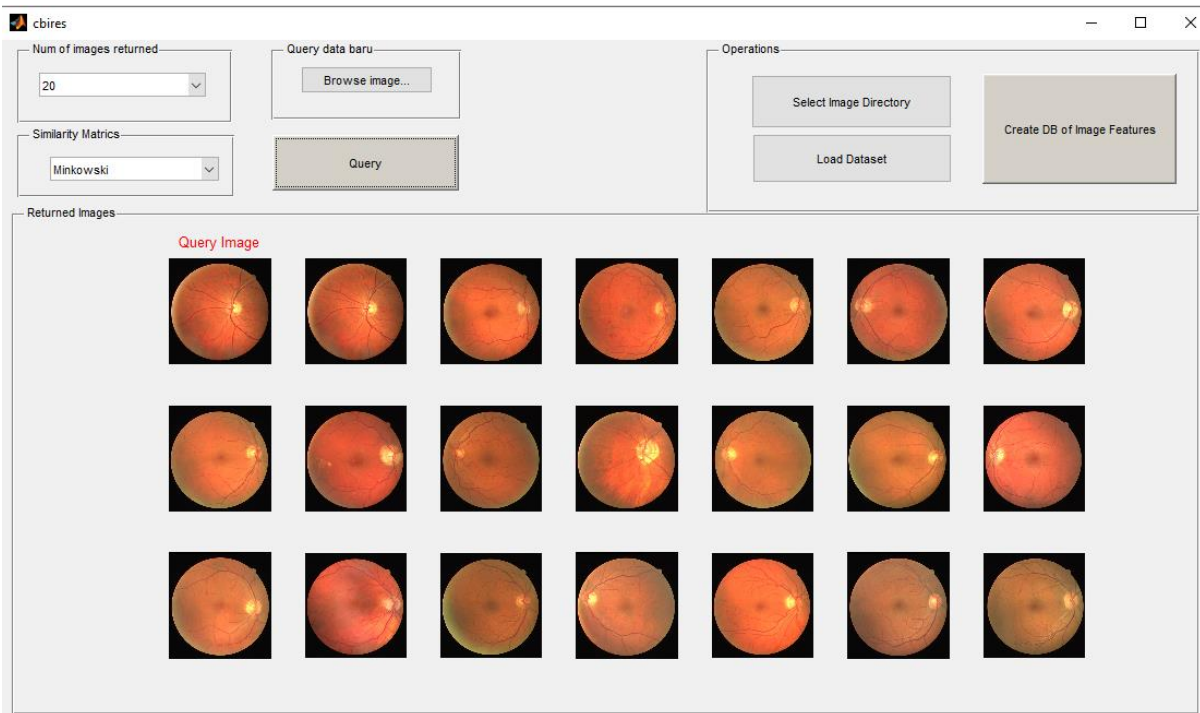
$\frac{\text{jumlah citra pada setiap wajah}}{\text{citra wajah cocok yang terpanggil}}$	$\frac{16}{20} = 0.8 \times 100 = 80 \%$
------------------------------------------------------------------------------------------	------------------------------------------

Query 2



$\frac{\text{jumlah citra pada setiap wajah}}{\text{citra wajah cocok yang terpanggil}}$	$\frac{15}{20} = 0.75 \times 100 = 75 \%$
------------------------------------------------------------------------------------------	-------------------------------------------

Query 3



$\frac{\text{jumlah citra pada setiap wajah}}{\text{citra wajah cocok yang terpanggil}}$

$$\frac{20}{20} = 1 \times 100 = 100 \%$$

Query 4



$\frac{\text{jumlah citra pada setiap wajah}}{\text{citra wajah cocok yang terpanggil}}$

$$\frac{16}{20} = 0.8 \times 100 = 80 \%$$

Query 5

Num of images returned: 20

Similarity Matrics: Minkowski

Query data baru: Browse image...

Query

Operations: Select Image Directory, Load Dataset, Create DB of Image Features

Returned Images: Query Image, 20 search results (16 similar, 4 less similar)

jumlah citra pada setiap wajah
citra wajah cocok yang terpanggil

$$\frac{16}{20} = 0.8 \times 100 = 80 \%$$

Query 6

Num of images returned: 20

Similarity Matrics: Minkowski

Query data baru: Browse image...

Query

Operations: Select Image Directory, Load Dataset, Create DB of Image Features

Returned Images: Query Image, 20 search results (16 similar, 4 less similar)

jumlah citra pada setiap wajah
citra wajah cocok yang terpanggil

$$\frac{16}{20} = 0.8 \times 100 = 80 \%$$

Query 7

Num of images returned: 20

Similarity Matrics: Minkowski

Query data baru: Browse image... Query

Operations: Select Image Directory, Load Dataset, Create DB of Image Features

Returned Images: Query Image, 20 similar fundus images

$\frac{\text{jumlah citra pada setiap wajah}}{\text{citra wajah cocok yang terpanggil}}$

$$\frac{18}{20} = 0.9 \times 100 = 90 \%$$

Query 8

Num of images returned: 20

Similarity Matrics: Minkowski

Query data baru: Browse image... Query

Operations: Select Image Directory, Load Dataset, Create DB of Image Features

Returned Images: Query Image, 20 similar fundus images

$\frac{\text{jumlah citra pada setiap wajah}}{\text{citra wajah cocok yang terpanggil}}$

$$\frac{16}{20} = 0.8 \times 100 = 80 \%$$

Query 9

jumlah citra pada setiap wajah
citra wajah cocok yang terpanggil

$$\frac{17}{20} = 0.85 \times 100 = 85 \%$$

Query 10

jumlah citra pada setiap wajah
citra wajah cocok yang terpanggil

$$\frac{18}{20} = 0.9 \times 100 = 90 \%$$

Query 11

Num of images returned: 20

Similarity Matrics: Minkowski

Returned Images: 21 images (1 Query Image, 20 results)

$\frac{\text{jumlah citra pada setiap wajah}}{\text{citra wajah cocok yang terpanggil}}$

$$\frac{10}{20} = 0.5 \times 100 = 50 \%$$

Query 12

Num of images returned: 20

Similarity Matrics: Minkowski

Returned Images: 21 images (1 Query Image, 20 results)

$\frac{\text{jumlah citra pada setiap wajah}}{\text{citra wajah cocok yang terpanggil}}$

$$\frac{18}{20} = 0.9 \times 100 = 90 \%$$

Query 13

jumlah citra pada setiap wajah
citra wajah cocok yang terpanggil

$$\frac{15}{20} = 0.75 \times 100 = 75 \%$$

Query 14

jumlah citra pada setiap wajah
citra wajah cocok yang terpanggil

$$\frac{19}{20} = 0.95 \times 100 = 95 \%$$

Query 15

cbires

Num of images returned: 20

Similarity Matrics: Minkowski

Query data baru: Browse image...

Query

Operations: Select Image Directory, Load Dataset, Create DB of Image Features

Returned Images: Query Image

21 face images displayed in a 3x7 grid.

$\frac{\text{jumlah citra pada setiap wajah}}{\text{citra wajah cocok yang terpanggil}}$

$$\frac{14}{20} = 0.7 \times 100 = 70 \%$$

Query 16

cbires

Num of images returned: 20

Similarity Matrics: Minkowski

Query data baru: Browse image...

Query

Operations: Select Image Directory, Load Dataset, Create DB of Image Features

Returned Images: Query Image

21 face images displayed in a 3x7 grid.

$\frac{\text{jumlah citra pada setiap wajah}}{\text{citra wajah cocok yang terpanggil}}$

$$\frac{16}{20} = 0.8 \times 100 = 80 \%$$

Query 17

Num of images returned: 20

Similarity Matrices: Minkowski

Query data baru: Browse image...

Query

Operations: Select Image Directory, Load Dataset, Create DB of Image Features

Returned Images: Query Image

*jumlah citra pada setiap wajah
citra wajah cocok yang terpanggil*

$$\frac{17}{20} = 0.85 \times 100 = 85 \%$$

Query 18

Num of images returned: 20

Similarity Matrices: Minkowski

Query data baru: Browse image...

Query

Operations: Select Image Directory, Load Dataset, Create DB of Image Features

Returned Images: Query Image

*jumlah citra pada setiap wajah
citra wajah cocok yang terpanggil*

$$\frac{15}{20} = 0.75 \times 100 = 75 \%$$

Query 19

Num of images returned: 20

Similarity Matrics: Minkowski

Query data baru: Browse image...

Query

Operations: Select Image Directory, Load Dataset, Create DB of Image Features

Returned Images: Query Image (16 images), 5 other images

jumlah citra pada setiap wajah
citra wajah cocok yang terpanggil

$$\frac{16}{20} = 0.8 \times 100 = 80 \%$$

Query 20

Num of images returned: 20

Similarity Matrics: Minkowski

Query data baru: Browse image...

Query

Operations: Select Image Directory, Load Dataset, Create DB of Image Features

Returned Images: Query Image (17 images), 4 other images

jumlah citra pada setiap wajah
citra wajah cocok yang terpanggil

$$\frac{17}{20} = 0.85 \times 100 = 85 \%$$