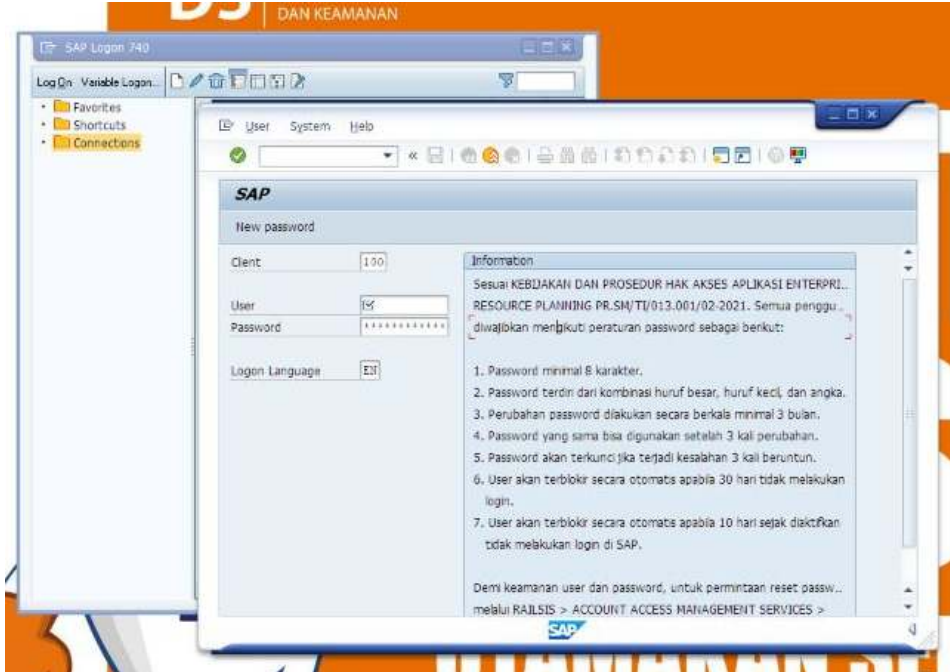


LAMPIRAN



Aplikasi System Application and Product in data Processing (SAP)

The screenshot shows the login page for the Rail Cargo System (RCS). At the top is the RCS logo with the tagline 'RAIL CARGO SYSTEM'. Below the logo are the following fields and elements:

- Username:** A text input field with a user icon on the left. Below it is the error message: 'Username tidak boleh kosong'.
- Password:** A text input field with a lock icon on the left.
- Hitunglah Hasilnya...:** A text input field with the number '23-1' displayed to its right.
- Remember Me
- LOGIN:** A blue button.
- Links: [Login](#) | [Lupa Password?](#)
- IT Helpdesk
- TOKA 11031 / 10032 | 10033 / 10034
- it.helpdesk@kereta-api.co.id
- Version : Stable-2.0.1

Aplikasi Rail Cargo System (RCS)



Ruang Unit Angkutan Barang PT KAI Divre IV Tanjung Karang



Kunjungan Dosen Pembimbing Lapangan

Jadwal Pelaksanaan Program Kerja Praktek

	Agustus 2022															September 2022								
	Minggu I					Minggu II					Minggu III					Minggu IV				Minggu V				
	8	9	10	11	12	15	16	17	18	19	22	23	24	25	26	29	3	31	1	2	5	6	7	8
Analisis Permasalahan																								
Identifikasi Resiko																								
Perancangan Program																								
Penerapan Program																								
Evaluasi Program																								
Hasil																								